

APP CRS	Rwy Idg	<b>6500</b>
<b>349°</b>	TDZE	<b>96</b>
	Apt Elev	<b>153</b>

# RNAV (GPS) Y RWY 35

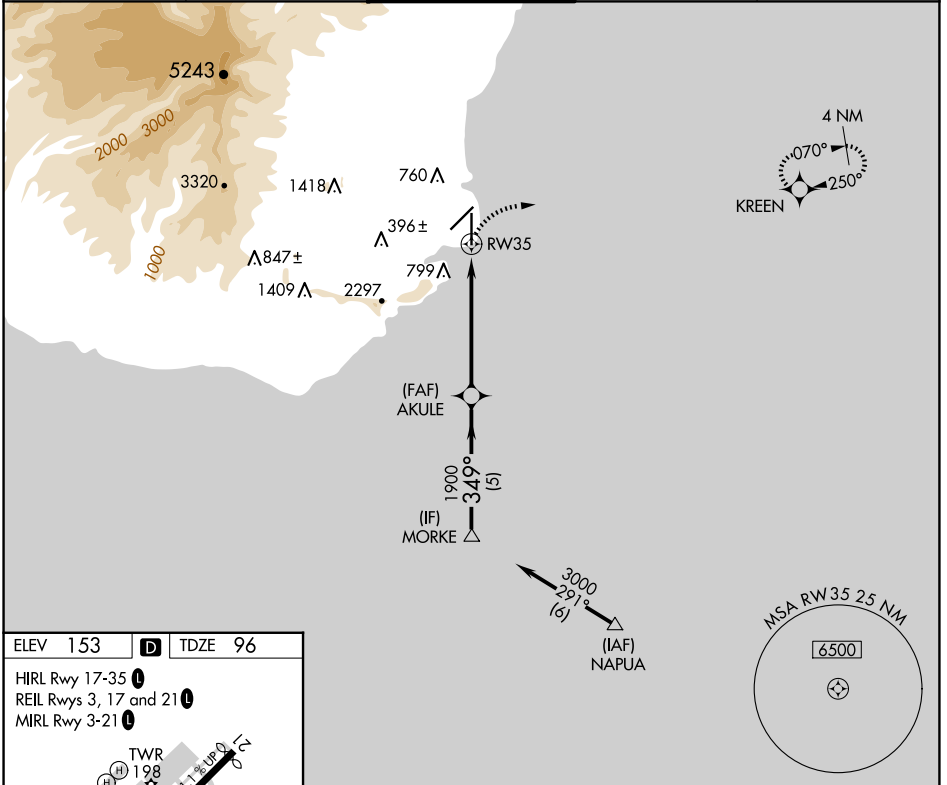
LIHUE (LIH)(PHLI)

**⚠** For inoperative MALSR, increase LNAV Cat A visibility to 1 mile and Cat E to 3 miles. Circling NA west of Rwy 17-35. Circling NA at night. DME/DME RNP-0.3 NA.

**MALSR**  

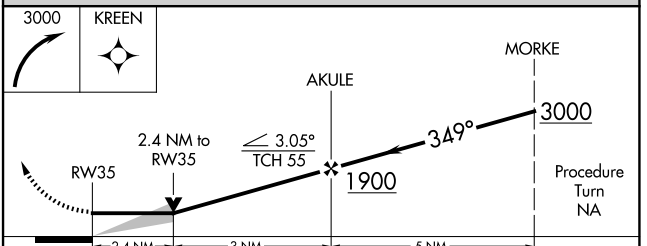
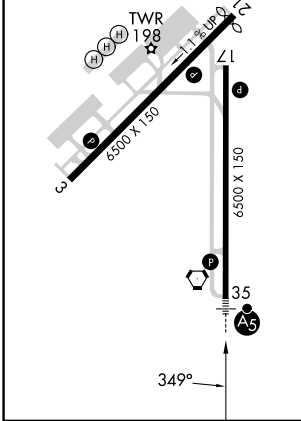

**MISSED APPROACH:** Climbing right turn to 3000 direct KREEN WP and hold.

ATIS <b>127.2</b>	HCF CENTER <b>126.5 269.4</b>	LIHUE TOWER ★ <b>118.9 (CTAF) 263.1</b>	GND CON <b>121.9</b>	CLNC DEL <b>126.5 269.4</b> (When twr closed)
----------------------	----------------------------------	--	-------------------------	---



ELEV	<b>153</b>	<b>D</b>	TDZE	<b>96</b>
------	------------	----------	------	-----------

HIRL Rwy 17-35 **Ⓛ**  
 REIL Rwy 3, 17 and 21 **Ⓛ**  
 MIRL Rwy 3-21 **Ⓛ**



CATEGORY	A	B	C	D	E
LNAV MDA	920- <sup>3</sup> / <sub>4</sub>	824 (800- <sup>3</sup> / <sub>4</sub> )	920-2 824 (800-2)	920-2 <sup>1</sup> / <sub>4</sub> 824 (800-2 <sup>1</sup> / <sub>4</sub> )	920-2 <sup>1</sup> / <sub>2</sub> 824 (800-2 <sup>1</sup> / <sub>2</sub> )
CIRCLING	920-1 767 (800-1)	920-1 <sup>1</sup> / <sub>4</sub> 767 (800-1 <sup>1</sup> / <sub>4</sub> )	920-2 <sup>1</sup> / <sub>4</sub> 767 (800-2 <sup>1</sup> / <sub>4</sub> )	920-2 <sup>1</sup> / <sub>2</sub> 767 (800-2 <sup>1</sup> / <sub>2</sub> )	NA

PAC: 07 AUG 2025 to 02 OCT 2025

PAC: 07 AUG 2025 to 02 OCT 2025