

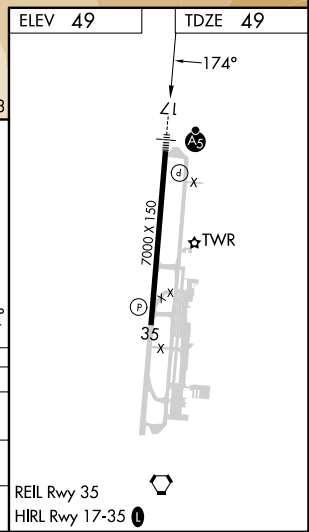
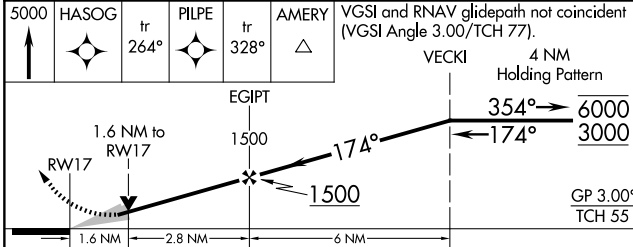
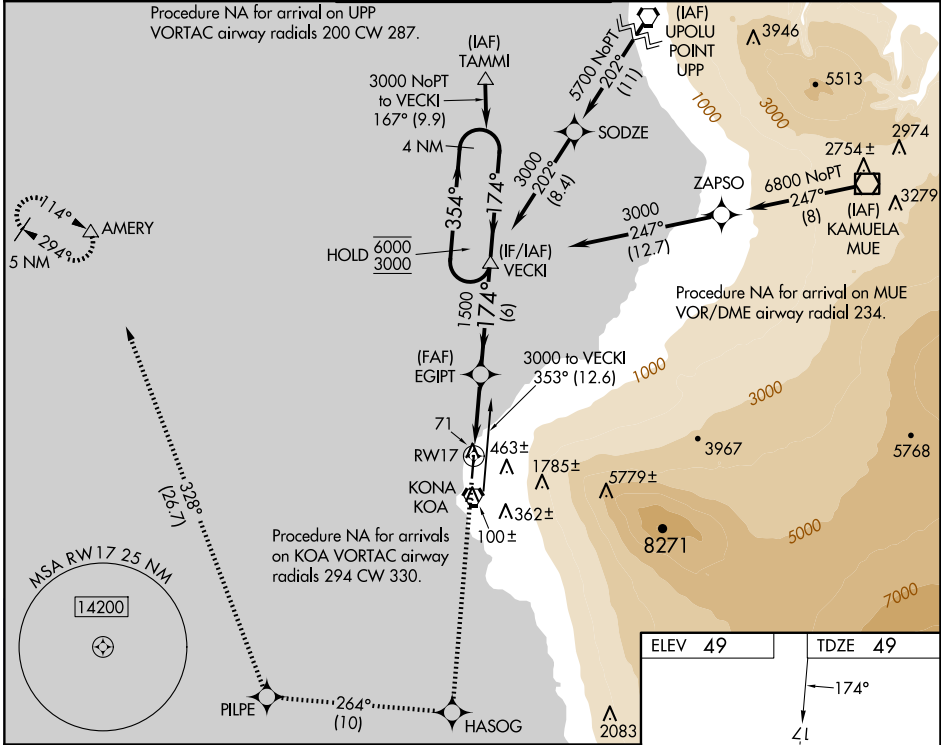
APP CRS	Rwy Idg	7000
174°	TDZE	49
	Apt Elev	49

RNAV (GPS) Y RWY 17

ELLISON ONIZUKA KONA INTL AT KEAHOLE (KOA) (PHKO)

RNP APCH - GPS.		MALSR	MISSED APPROACH: Climb to 5000 direct HASOG and on 264° track to PILPE and on 328° track to AMERY and hold.	
<p>⚠ Circling NA east of Rwy 17-35. WAAS VNAV NA. For uncompensated Baro-VNAV systems, LNAV/VNAV NA below 18°C or above 54°C. For inop ALS, increase LNAV/VNAV all Cats visibility to 1½ miles.</p>				

ATIS 127.4	HCF CENTER 118.45 278.3	KONA TOWER ★ 120.3(CTAF) 254.3	GND CON 121.9	CLNC DEL 118.6
----------------------	-----------------------------------	--	-------------------------	--------------------------



CATEGORY	A	B	C	D
LNAV/VNAV DA	540-1 491 (500-1)			
LNAV MDA	640-½ 591 (600-½)	640-¼ 591 (600-¼)		
C CIRCLING	640-1 591 (600-1)	640-¾ 591 (600-¾)	640-2 591 (600-2)	

REIL Rwy 35

HIRL Rwy 17-35

PAC, 17 APR 2025 to 12 JUN 2025

PAC, 17 APR 2025 to 12 JUN 2025