

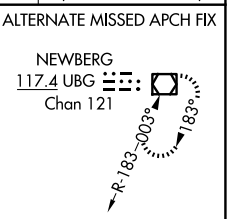
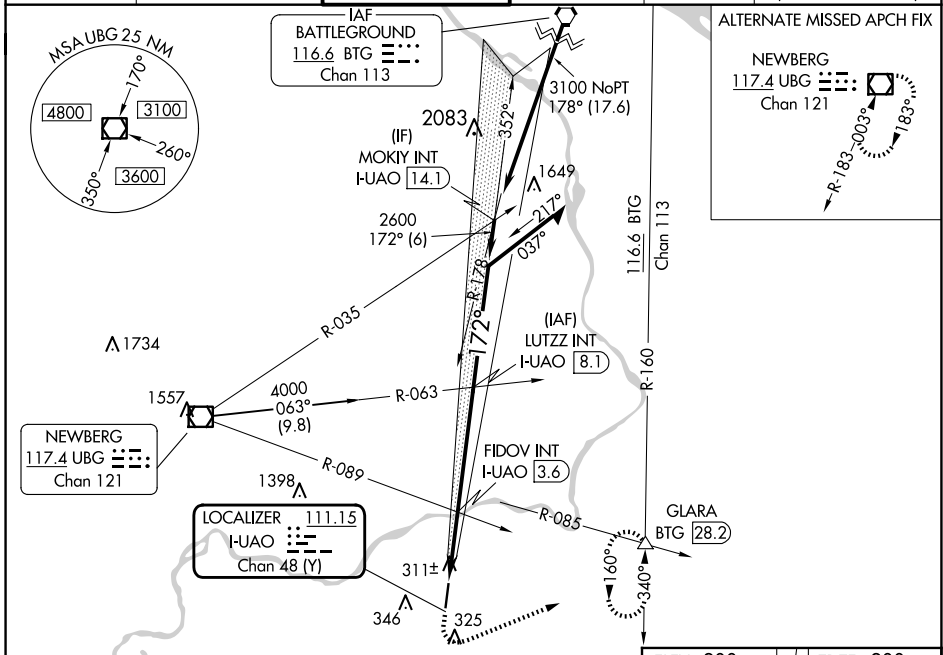
LOC/DME I-UAO 111.15 Chan 48 (Y)	APP CRS 172°	Rwy Idg 5003 TDZE 200 Apt Elev 200
--	------------------------	---

LOC RWY 17

AURORA STATE (UAO)

<p>▼ Rwy 17 helicopter visibility reduction below 3/4 SM NA.</p> <p>▲ FIDOV fix minimums: Inop table does not apply to Cats C/D.</p> <p>For inop ALS, increase S-17 Cats C/D visibility to 2 1/2 SM.</p>	<p>ODALS</p>	<p>MISSED APPROACH: Climb to 900 then climbing left turn to 4000 on heading 050° and BTG R-160 to GLARA INT/BTG 28.2 DME and hold, continue climb-in-hold to 4000.</p>
--	--------------	--

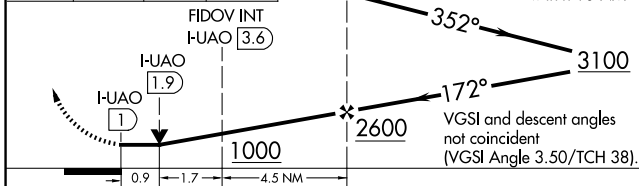
<p>ATIS 118.525</p>	<p>PORTLAND APP CON 126.0 269.175</p>	<p>AURORA TOWER★ 120.35 (CTAF) 0</p>	<p>GND CON 119.15</p>	<p>CLNC DEL 119.15</p>	<p>PORTLAND CLNC DEL 119.95 (When tower closed)</p>
--------------------------------	--	--	----------------------------------	-----------------------------------	--



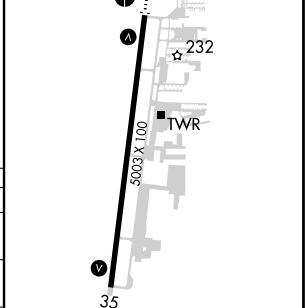
NW-1, 15 MAY 2025 to 12 JUN 2025

NW-1, 15 MAY 2025 to 12 JUN 2025

900	4000	BTG	GLARA	LUTZZ INT I-UAO [8.1]	Remain within 10 NM
↑	hdg 050°	R-160	△		



ELEV 200	TDZE 200
----------	----------



CATEGORY	A	B	C	D
S-17	1000-3/4 800 (800-3/4)	1000-1 800 (800-1)	1000-2	800 (800-2)
CIRCLING	1000-1 800 (800-1)	1000-1 1/4 800 (800-1 1/4)	1000-2 1/2	800 (800-2 1/2)
FIDOV FIX MINIMUMS				
S-17	580-3/4 380 (400-3/4)		580-1 380 (400-1)	
CIRCLING	700-1 500 (500-1)		700-1 1/2 940-2 1/4 500 (500-1 1/2) 740 (800-2 1/4)	

MIRL Rwy 17-35 0					
FAF to MAP 7.1 NM					
Knots	60	90	120	150	180
Min:Sec	7:06	4:44	3:33	2:50	2:22