

VOR/DME SHR	APP CRS	Rwy Idg	<b>8301</b>
<b>113.55</b>	<b>131°</b>	TDZE	<b>4014</b>
Chan <b>82(Y)</b>		Apt Elev	<b>4021</b>

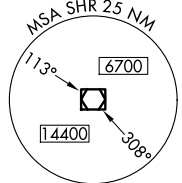
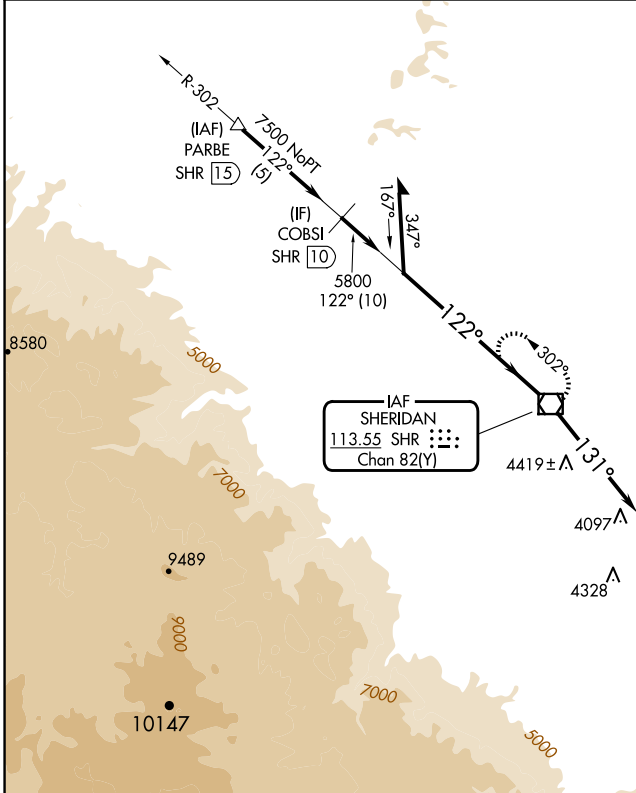
# VOR RWY 15

SHERIDAN COUNTY (SHR)

When local altimeter setting not received, procedure NA. Night landing: Rwy 24 NA.

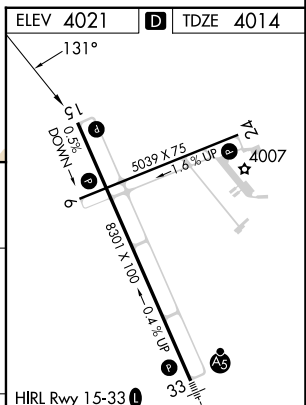
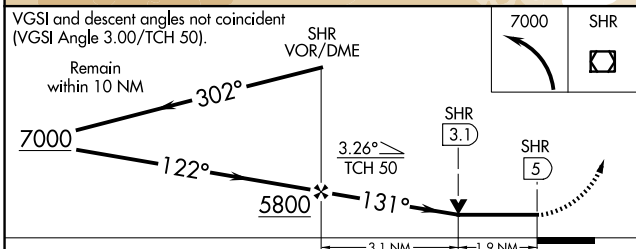
MISSED APPROACH: Climbing left turn to 7000 direct SHR VOR/DME and hold, continue climb-in-hold to 7000.

ASOS <b>135,175</b>	SALT LAKE CENTER <b>127.75 351.9</b>	UNICOM <b>123.0</b> (CTAF) <b>1</b>
------------------------	---	--



NW-1, 15 MAY 2025 to 12 JUN 2025

NW-1, 15 MAY 2025 to 12 JUN 2025



CATEGORY	A	B	C	D
S-15	4680-1	666 (700-1)	4680-1 $\frac{7}{8}$	666 (700-1 $\frac{7}{8}$ )
<b>C</b> CIRCLING	4680-1	659 (700-1)	4860-2 $\frac{1}{2}$ 839 (900-2 $\frac{1}{2}$ )	5220-3 1199 (1200-3)

HIRL Rwy 15-33 **1**  
MIRL Rwy 6-24 **1**  
REIL Rws 6, 15, and 24 **1**

FAF to MAP 5 NM

Knots	60	90	120	150	180
Min:Sec	5:00	3:20	2:30	2:00	1:40