

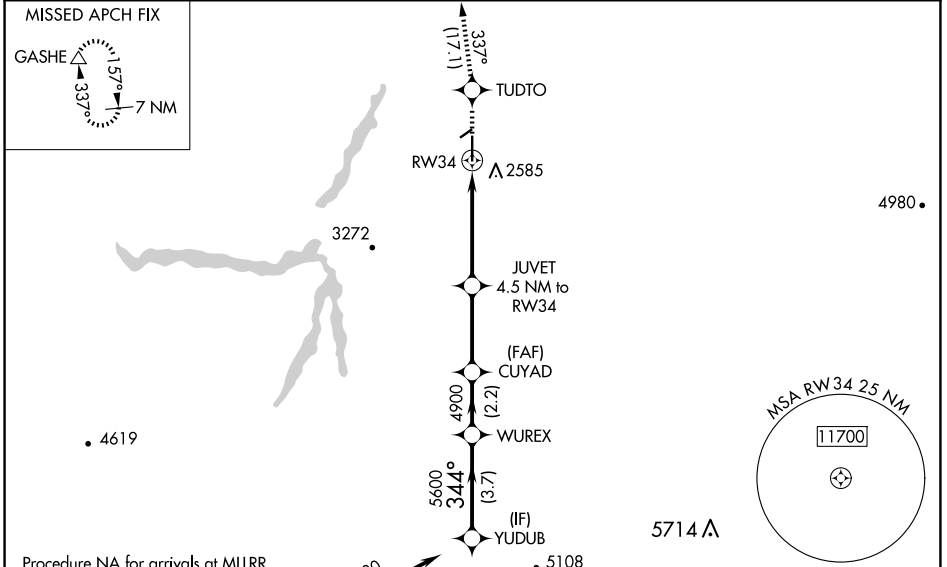
WAAS CH 60930 W34A	APP CRS 344°	Rwy Idg TDZE Apt Elev	5091 2438 2438
--	------------------------	-----------------------------	---

RNAV (GPS) RWY 34

MADRAS MUNI (S33)

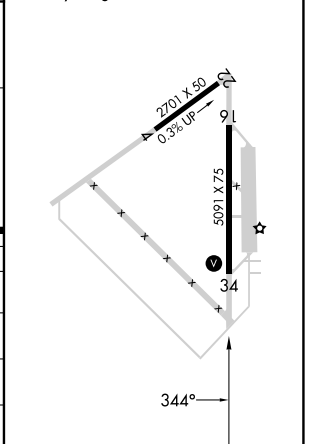
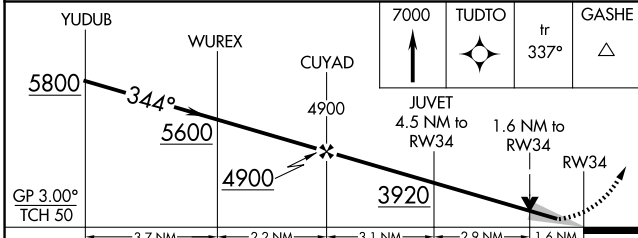
RNP APCH - GPS.		MISSED APPROACH: Climb to 7000 direct TUDTO and on track 337° to GASHE and hold, continue climb-in-hold to 7000.
<p>⚠ Circling Rwy 22 NA at night. Baro-VNAV and VDP NA when using Redmond altimeter setting. For uncompensated Baro-VNAV systems, LNAV/VNAV NA below 20°C -19°C or above 54°C. When local altimeter setting not received, use Redmond altimeter setting and increase LPV DA to 2832 feet and all visibilities 3/8 SM. Increase LNAV/VNAV DA to 2846 feet and all visibilities 1/4 SM. Increase all MDAs 160 feet and LNAV visibility Cat C 3/8 SM, and Circling visibility Cat C 3/8 SM.</p>		

AWOS-3PT 132.425	SEATTLE CENTER 126.15 269.475	UNICOM 122.8 (CTAF) ①
----------------------------	---	---------------------------------



Procedure NA for arrivals at MLLRR on T261 and V25 southbound.

ELEV 2438	TDZE 2438
MIRL Rwy 16-34 ①	
REIL Rwy 34 ①	



CATEGORY	A	B	C	D
LPV DA	2688-3/4 250 (300-3/4)			NA
LNAV/VNAV DA	2702-7/8 264 (300-7/8)			NA
LNAV MDA	3000-1	562 (600-1)	3000-1 562 (600-1 5/8)	NA
CIRCLING	3000-1 562 (600-1)	3020-1 582 (600-1)	3020-1 582 (600-1 5/8)	NA

NW-1, 15 MAY 2025 to 12 JUN 2025

NW-1, 15 MAY 2025 to 12 JUN 2025