

RNAV (GPS) RWY 35

REXBURG-MADISON COUNTY (R.X.E)

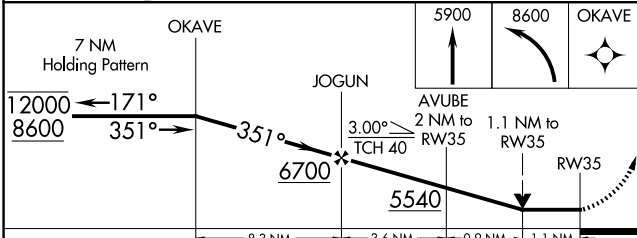
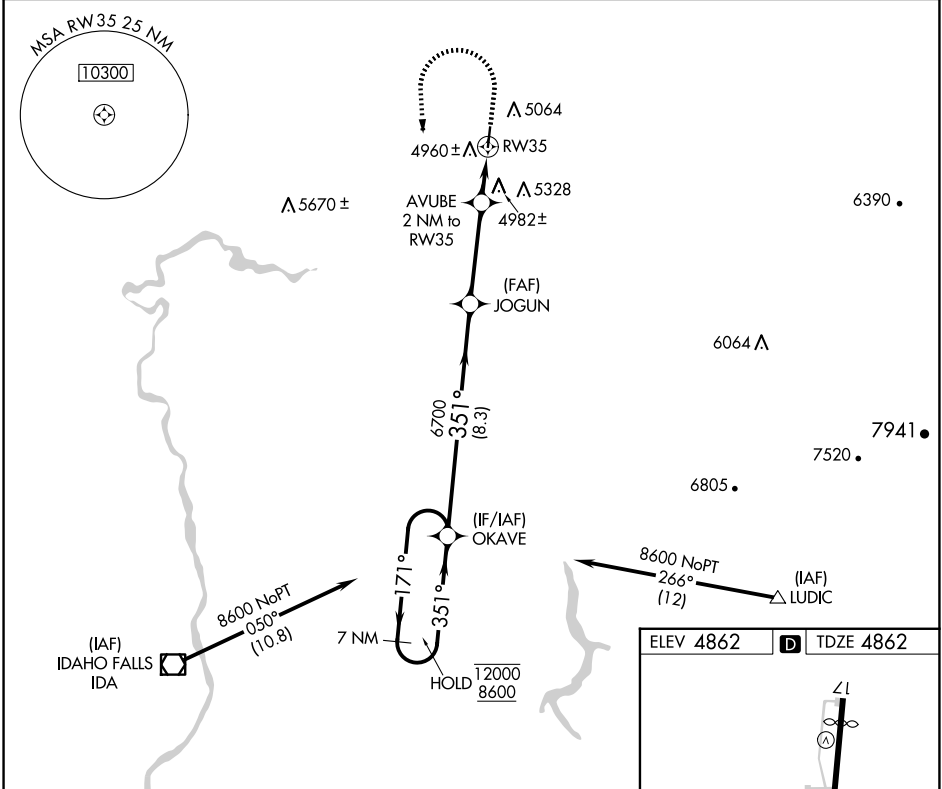
APP CRS 351°	Rwy Idg 3900
	TDZE 4862
	Apt Elev 4862

RNP APCH - GPS.

⚠ Rwy 35 helicopter visibility reduction below ¼ SM NA.

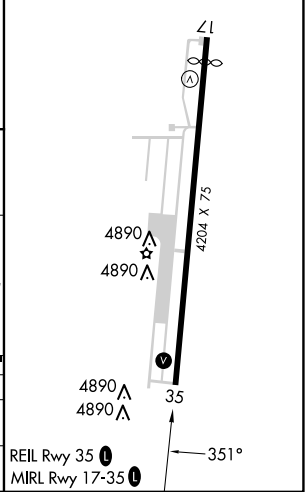
MISSED APPROACH: Climb to 5900 then climbing left turn to 8600 direct OKAVE and hold.

ASOS 135.075	SALT LAKE CENTER 128.35 239.25	UNICOM 122.8 (CTAF) 0
------------------------	--	---------------------------------



CATEGORY	A	B	C	D
LNVA MDA	5240-1 378 (400-1)			
CIRCLING	5380-1 518 (600-1)	5580-1 718 (800-1)	5680-2½ 818 (900-2½)	5760-3 898 (900-3)

ELEV 4862	D TDZE 4862
-----------	--------------------



NW-1, 15 MAY 2025 to 12 JUN 2025

NW-1, 15 MAY 2025 to 12 JUN 2025