

WAAS CH 56529 W07A	APP CRS 067°	Rwy Idg TDZE 3490 Apt Elev 3490	5099
--	------------------------	---	-------------

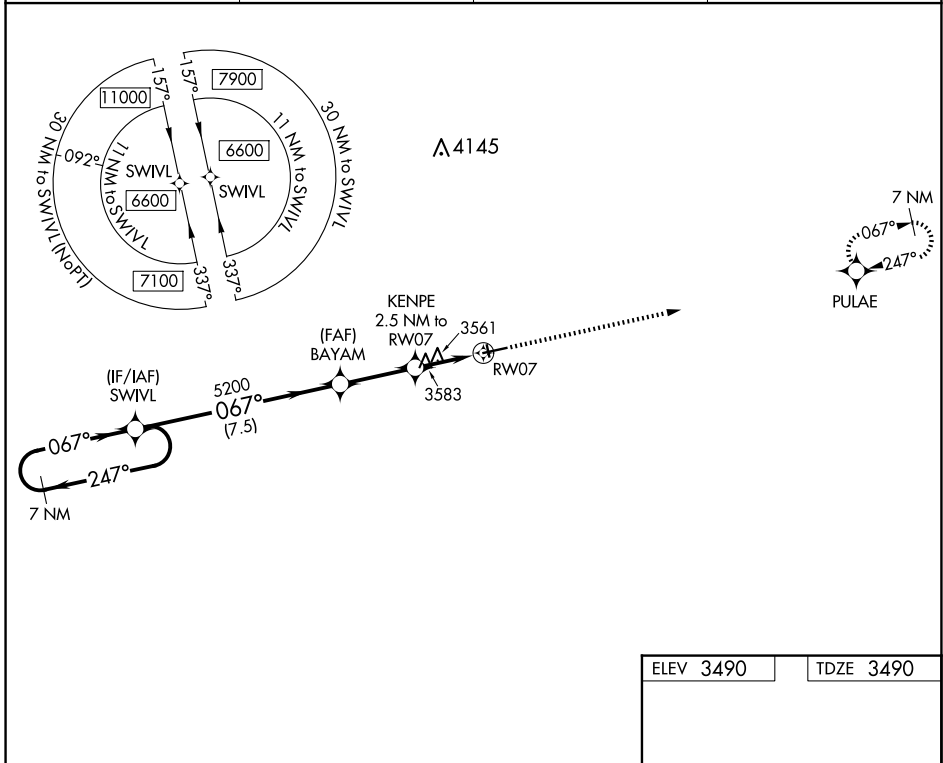
RNAV (GPS) RWY 7

ROUNDUP (RPX)

NA Use Billings altimeter setting, when not received, procedure NA.
When VGSI inop, Straight-in/Circling Rwy 7 procedure NA at night.
DME/DME RNP-0.3 NA. Visibility reduction by helicopters NA.

MISSED APPROACH: Climb to 6300 direct PULAE and hold.

BIL ASOS 126.3	SALT LAKE CENTER 126.85 305.2	UNICOM 122.8 (CTAF)	122.7
--------------------------	---	-------------------------------	--------------



NW-1, 15 MAY 2025 to 12 JUN 2025

NW-1, 15 MAY 2025 to 12 JUN 2025

