

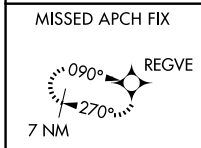
WAAS CH 49216 W 27A	APP CRS 270°	Rwy Idg 10002 TDZE 6765 Apt Elev 6765
---	------------------------	--

RNAV (GPS) RWY 27

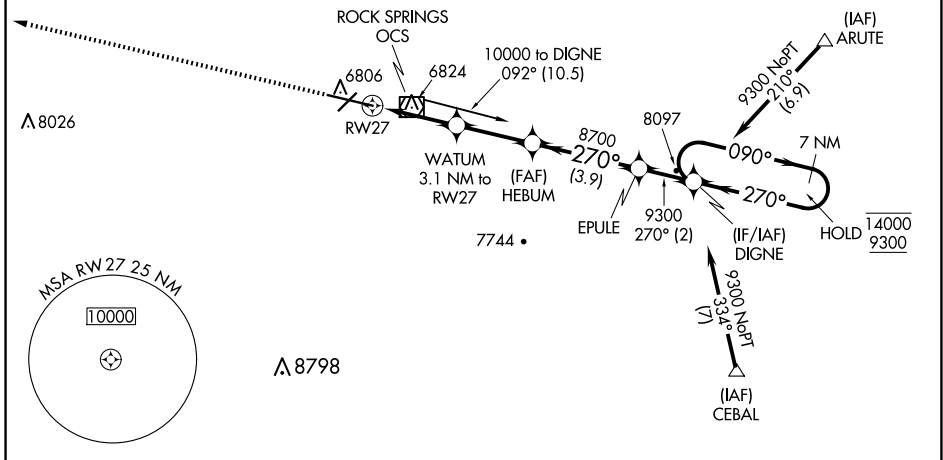
SOUTHWEST WYOMING RGNL (R.K.S)

RNP APCH.	MALSR 	MISSED APPROACH: Climb to 9800 direct REGVE and hold.
<p> For uncompensated Baro-VNAV systems, LNAV/VNAV NA below -27°C or above 44°C. For inop ALS increase LNAV/VNAV all Cats visibility to ½ SM.</p>		

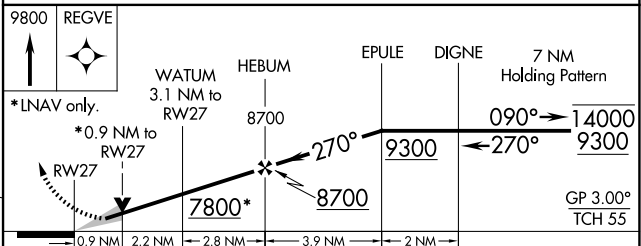
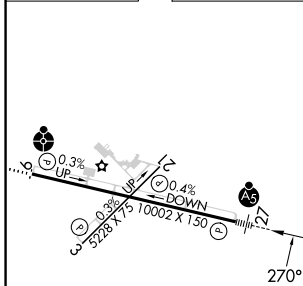
AWOS-3 118.375	SALT LAKE CENTER 124.35 353.5	UNICOM 122.8 (CTAF) 0
--------------------------	---	---------------------------------



Procedure NA for arrivals at OCS VOR/DME on V235 southwest bound, V187 north and southbound and T298 southwest bound.



ELEV 6765	D	TDZE 6765
-----------	----------	-----------



CATEGORY	A	B	C	D
LPV DA		6965-½	200 (200-½)	
LNAV/VNAV DA		7036-½	271 (300-½)	
LNAV MDA		7100-½	335 (400-½)	
<input checked="" type="checkbox"/> CIRCLING	7140-1 375 (400-1)	7220-1 455 (500-1)	7220-1½ 455 (500-1½)	7540-2 ½ 775 (800-2 ½)

MIRL Rwy 3-21
HIRL Rwy 9-27 **0**
REIL Rwy 3 and 21 **0**

NW-1, 15 MAY 2025 to 12 JUN 2025

NW-1, 15 MAY 2025 to 12 JUN 2025