

VOR/DME R1W 114.05 Chan 87(Y)	APP CRS 101°	Rwy Idg 8204 TDZE 5516 Apt Elev 5516
---	------------------------	---

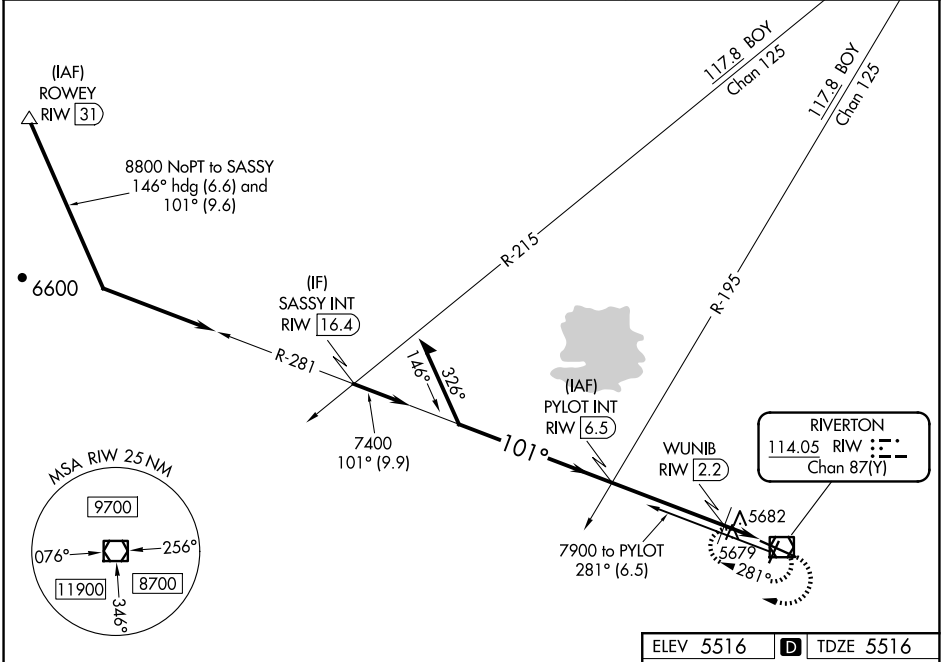
VOR RWY 10

CENTRAL WYOMING RGNL (R1W)

⚠ When local altimeter setting not received, use Lander altimeter setting and increase all MDA 60 feet and increase S-10 Cat C and D visibility ¼ mile and Circling Cat C visibility ½ mile, increase WUNIB fix minimums Cat C and D visibility ½ mile. Rwy 10 helicopter visibility reduction below ¾ SM NA.

MISSED APPROACH: Climb to 7900 in R1W VOR/DME holding pattern.

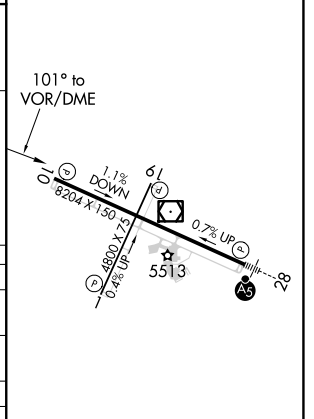
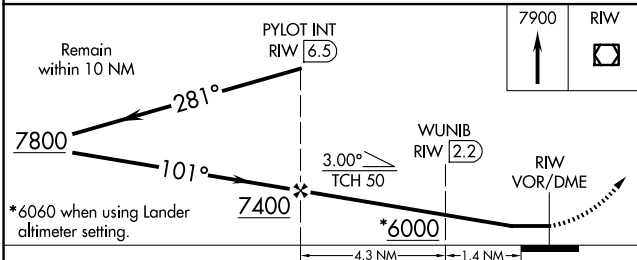
ASOS 121.425	SALT LAKE CENTER 133.25 285.6	UNICOM 122.8 (CTAF) 0
------------------------	---	---------------------------------



NW-1, 15 MAY 2025 to 12 JUN 2025

NW-1, 15 MAY 2025 to 12 JUN 2025

ELEV 5516	D TDZE 5516
-----------	--------------------



CATEGORY	A	B	C	D
S-10	6000-1 484 (500-1)		6000-1 ¾ 484 (500-1 ¾)	
C CIRCLING	6000-1 484 (500-1)		6000-1 ½ 484 (500-1 ½)	6120-2 604 (600-2)
WUNIB FIX MINIMUMS (DME REQUIRED)				
S-10	5940-1 424 (500-1)		5940-1 ¼ 424 (500-1 ¼)	
C CIRCLING	6000-1 484 (500-1)		6000-1 ½ 484 (500-1 ½)	6120-2 604 (700-2)

REIL Rwy 1, 10, and 19 **0**
MIRL Rwy 1-19 **0**
HIRL Rwy 10-28 **0**