

WAAS CH 90233 W13A	APP CRS 134°	Rwy Idg TDZE Apt Elev	6200 5046 5096
--	------------------------	-----------------------------	---

RNAV (GPS) RWY 13

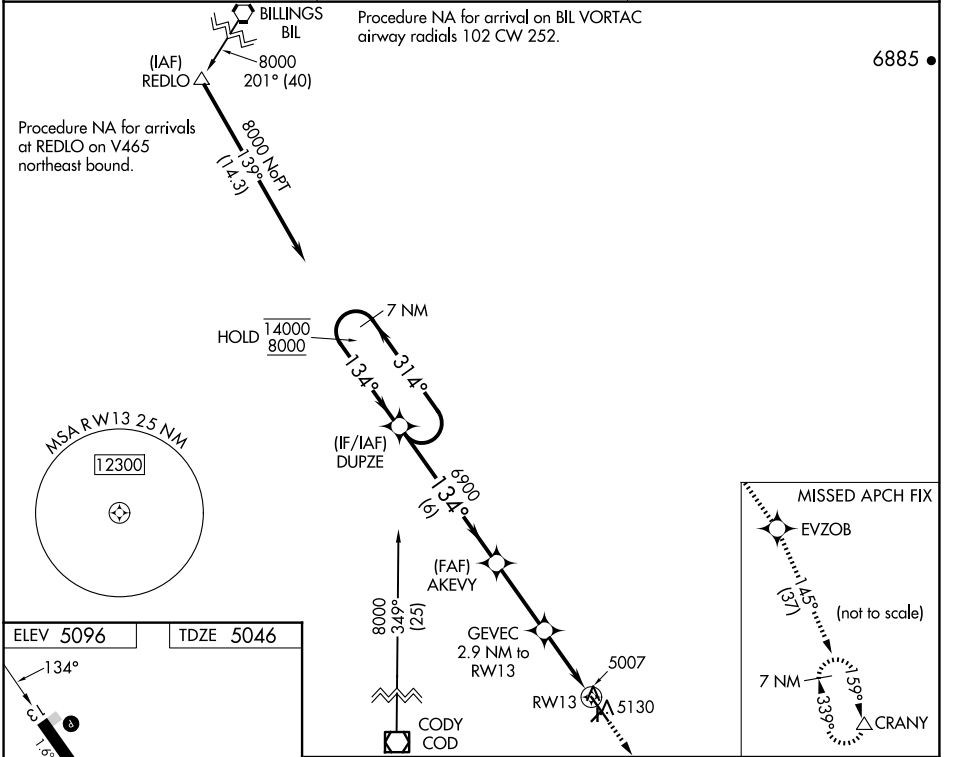
POWELL MUNI (POY)

RNP APCH.

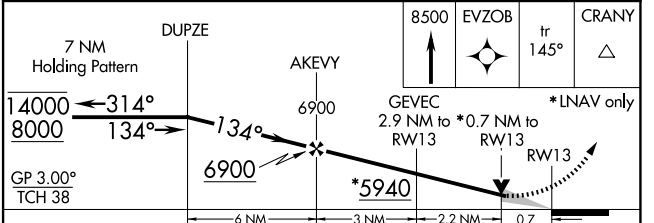
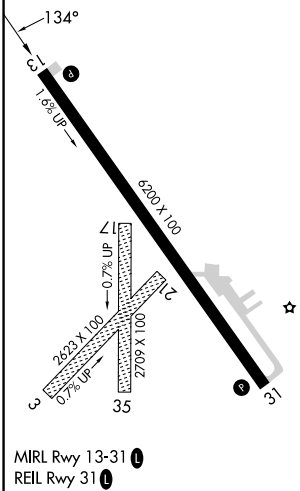
NA Circling NA to Rwys 3, 17, 21 and 35. For uncompensated Baro-VNAV systems, LNAV/VNAV NA below -25°C or above 51°C. Baro-VNAV and VDP NA when using Cody altimeter setting. When local altimeter setting not received, use Cody altimeter setting and increase all DA 54 feet and all MDA 60 feet.

MISSED APPROACH: Climb to 8500 direct EVZOB and on track 145° to CRANY and hold.

AWOS-3 119.275	SALT LAKE CENTER 127.75 351.9	UNICOM 122.7 (CTAF) 0
--------------------------	---	---------------------------------



ELEV 5096	TDZE 5046
-----------	-----------



CATEGORY	A	B	C	D
LPV DA		5296-1	250 (200-1)	
LNAV/VNAV DA		5296-1	250 (200-1)	
LNAV MDA		5300-1	254 (300-1)	
CIRCLING	5500-1 404 (500-1)	5560-1 464 (500-1)	5560-1½ 464 (500-1½)	5660-2 564 (600-2)

NW-1, 15 MAY 2025 to 12 JUN 2025

NW-1, 15 MAY 2025 to 12 JUN 2025