

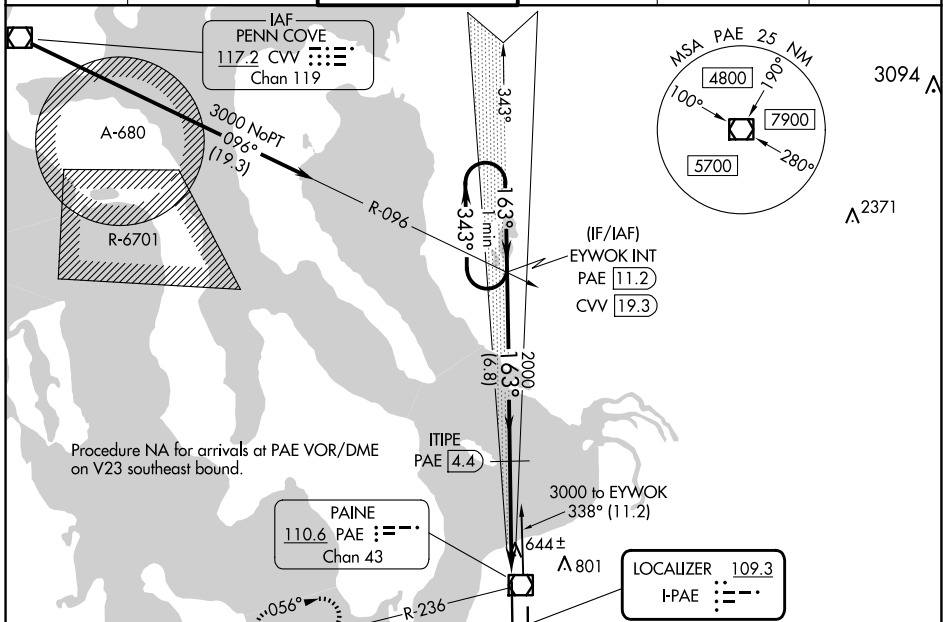
LOC I-PAE 109.3	APP CRS 163°	Rwy Idg 9010
		TDZE 570
		Apt Elev 608

ILS Y or LOC Y RWY 16R

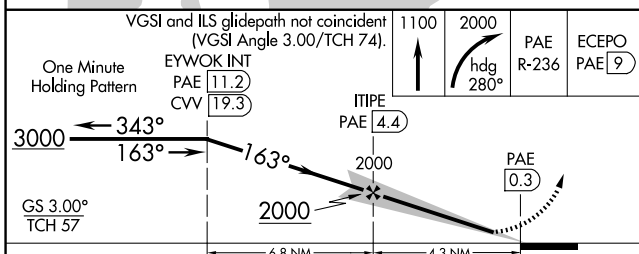
SEATTLE PAINE FLD INTL (P.A.E)

<p>▼ Circling Rwy 34R NA at night. DME required. DME from PAE VOR/DME. Simultaneous reception of I-PAE and PAE DME required.</p> <p>▲</p>	<p>MALSR</p>	<p>MISSED APPROACH: Climb to 1100 then climbing right turn to 2000 on heading 280° and PAE VOR/DME R-236 to ECEPO/PAE 9 DME and hold.</p>

ATIS 128.65	SEATTLE APP CON 128.5 306.9	PAINE TOWER ★ 132.95 (CTAF) 0 256.7	GND CON 121.8 339.8	CLNC DEL 127.175	UNICOM 122.95
-----------------------	---------------------------------------	---	-------------------------------	----------------------------	-------------------------



ELEV 608	TDZE 570



CATEGORY	A	B	C	D
S-ILS 16R	770/18	200 (200-½)		NA
S-LOC 16R	940/24	370 (400-½)		NA
C CIRCLING	1100-1	492 (500-1)		NA

TDZ/CL Rwy 16R
HIRL Rwy 16R-34L
REIL Rws 16L and 34R
MIRL Rwy 16L-34R

NW-1, 15 MAY 2025 to 12 JUN 2025

NW-1, 15 MAY 2025 to 12 JUN 2025