

APP CRS	Rwy Idg	6108
342°	TDZE	5012
	Apt Elev	5024

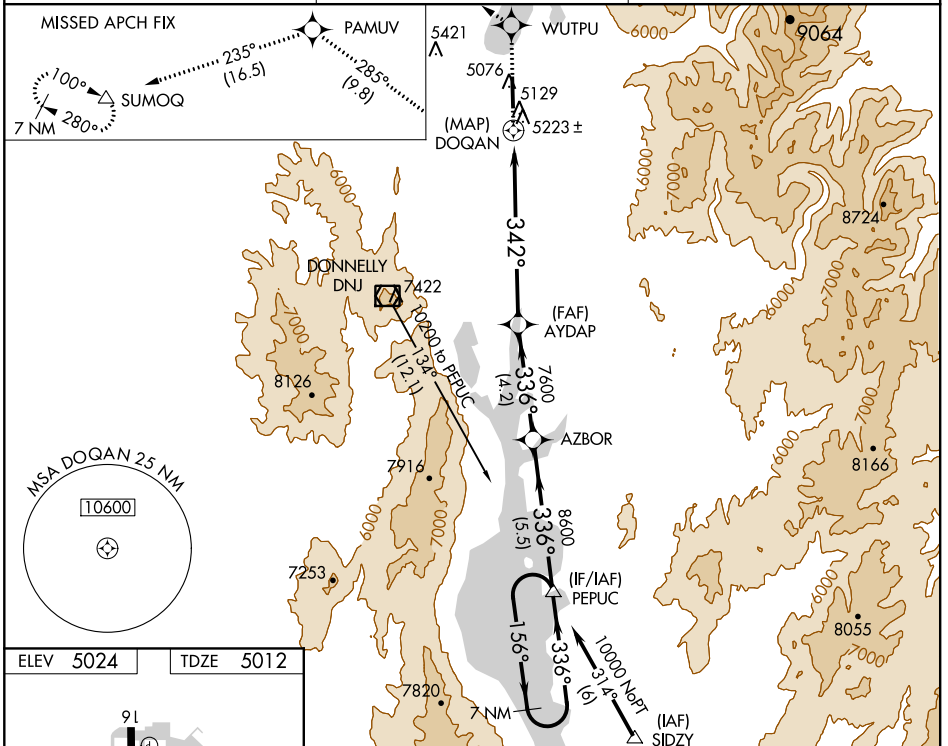
RNAV (GPS) Y RWY 34

MC CALL MUNI (MYL)

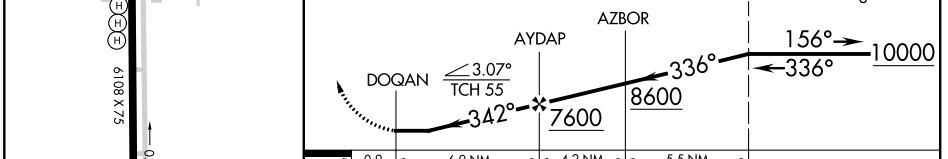
⚠ DME/DME RNP-0.3 NA. Visibility reduction by helicopters NA.
⚠ *Missed approach requires minimum climb of 380' per NM to 8000.
❄ -21°C

MISSED APPROACH: Climb to 12000 direct WUTPU and via track 285° to PAMUV and via track 235° to SUMOQ and hold, continue climb-in-hold to 12000.

ASOS 119.925	SALT LAKE CENTER 128.05 306.95	UNICOM 122.8 (CTAF) 0
------------------------	--	--



ELEV 5024	TDZE 5012	12000 WUTPU ↑	tr 285° PAMUV	tr 235° SUMOQ	△	VGSI and descent angles not coincident (VGSI Angle 3.50/TCH 40).
					7 NM Holding Pattern	



CATEGORY	A	B	C	D
LNAV MDA*	5580-1	568 (600-1)	5580-1½ 568 (600-1½)	5580-1¾ 568 (600-1¾)
LNAV MDA	6600-1¼ 1588 (1600-1¼)	6600-1½ 1588 (1600-1½)	6600-3	1588 (1600-3)
CIRCLING	6600-1¼ 1576 (1600-1¼)	6600-1½ 1576 (1600-1½)	6600-3	1576 (1600-3)

MIRL Rwy 16-34 **0**
 REIL Rwy 16 and 34 **0**

NW-1, 14 SEP 2017 to 12 OCT 2017

NW-1, 14 SEP 2017 to 12 OCT 2017