

LOC I-MMV <b>110.9</b>	APP CRS <b>218°</b>	Rwy Idg <b>5420</b>
		TDZE <b>161</b>
		Apt Elev <b>163</b>

# ILS or LOC RWY 22

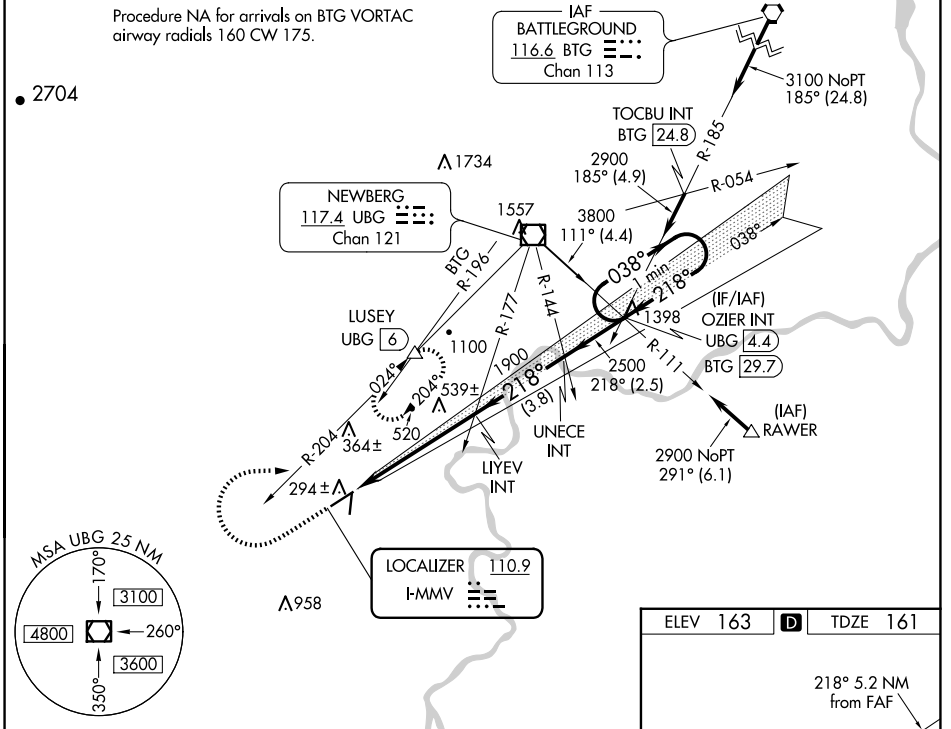
MC MINNVILLE MUNI (MMV)

**⚠** DME required. When local altimeter setting not received, use Aurora State altimeter setting: increase all DA to 403 feet; increase all MDA 60 feet and S-LOC 22 all Cats and Circling Cat C visibility 1/4 SM.

**MALS**  

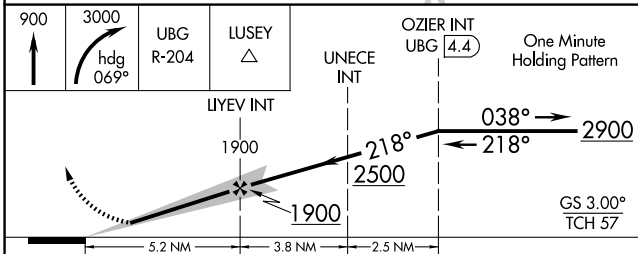

**MISSED APPROACH:** Climb to 900 then climbing right turn to 3000 via heading 069° and UBG VOR/DME R-204 to LUSEY/UBG VOR/DME 6 DME and hold, continue climb-in-hold to 3000.

ASOS <b>135.675</b>	PORTLAND APP CON <b>126.0 284.6 (NORTH)</b>	SEATTLE CENTER <b>125.8 291.7 (SOUTH)</b>	CLNC DEL <b>118.35</b>	UNICOM <b>123.0 (CTAF) 0</b>
------------------------	--	--	---------------------------	---------------------------------



NW-1, 15 MAY 2025 to 12 JUN 2025

NW-1, 15 MAY 2025 to 12 JUN 2025



ELEV 163	<b>D</b>	TDZE 161
----------	----------	----------

REIL Rwy 4 <b>0</b>
HIRL Rwy 4-22 <b>0</b>
FAF to MAP 5.2 NM
Knots: 60, 90, 120, 150, 180
Min:Sec: 5:12, 3:28, 2:36, 2:05, 1:44

CATEGORY	A	B	C	D
S-ILS 22		361-1/2	200 (200-1/2)	
S-LOC 22	600-1/2	439 (500-1/2)	600-3/4 439 (500-3/4)	600-1 439 (500-1)
CIRCLING	660-1 497 (500-1)	840-1 677 (700-1)	920-2 1/4 757 (800-2 1/4)	1320-3 1157 (1200-3)