

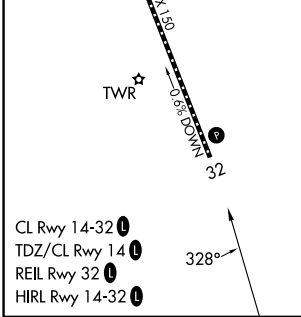
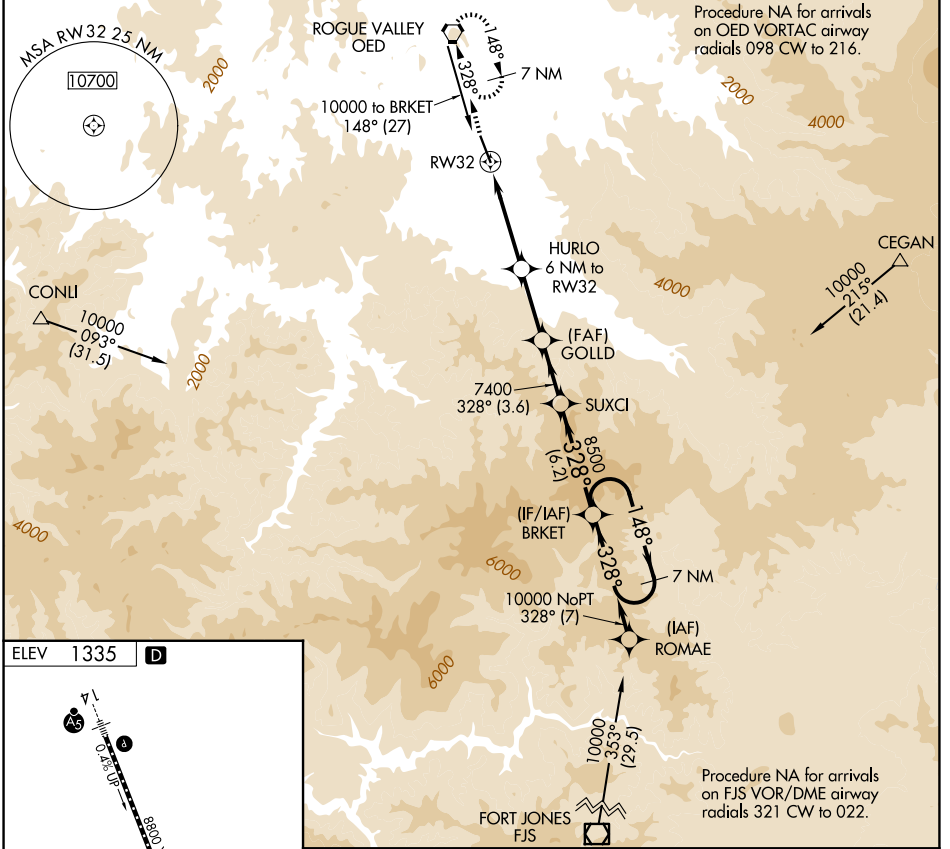
APP CRS	Rwy Ldg TDZE	N/A
328°	Apt Elev	N/A
		1335

# RNAV (GPS)-D

ROGUE VALLEY INTL/MEDFORD (MFR)

RNP APCH.	MISSED APPROACH: Climb to 7800 direct OED VORTAC and hold, continue climb-in-hold to 7800.		
	Circling NA for Cats C and D northeast of Rwy 14-32.		

ATIS	CASCADE APP CON *	MEDFORD TOWER *	GND CON	UNICOM
127.25	124.3 379.9	119.4 (CTAF) 257.8	121.8	122.95



7800	OED	VGSi and descent angles not coincident (VGSi Angle 3.00/TCH 50).		7 NM Holding Pattern
HURLO	GOLDD	SUXCI	BRKET	
6 NM to RW32	6 NM to RW32	3.6 NM	6.2 NM	
5800	7400	8500	10000	
328°	148°	328°	148°	

CATEGORY	A	B	C	D
CIRCLING	3600-1¼ 2265 (2300-1¼)	3600-1½ 2265 (2300-1½)	3600-3	2265 (2300-3)

NW-1, 07 AUG 2025 to 04 SEP 2025

NW-1, 07 AUG 2025 to 04 SEP 2025