

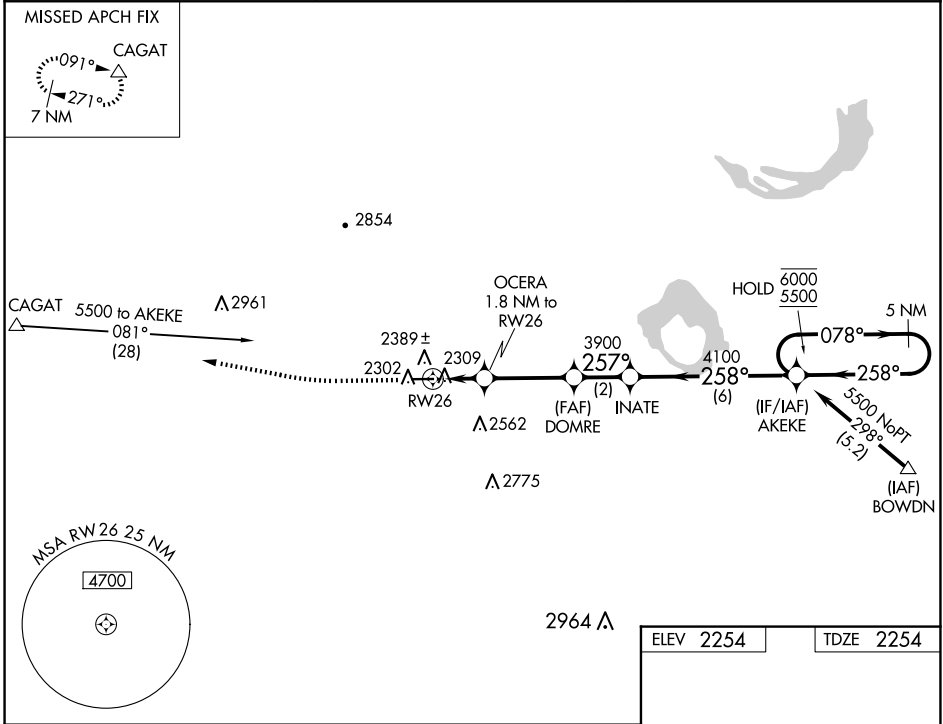
WAAS CH 97721 W26A	APP CRS 257°	Rwy Idg TDZE Apt Elev	4500 2254 2254
--	------------------------	-----------------------------	---

RNAV (GPS) RWY 26

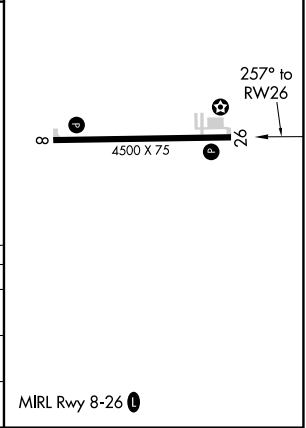
MALTA (M75)

RNP APCH. ▼	MISSED APPROACH: Climb to 2700, then climb to 6500 direct CAGAT and hold, continue climb-in-hold 6500.
----------------	--

AWOS-3 119.25	SALT LAKE CITY CENTER 126.85 305.2	AUNICOM 122.8 (CTAF) ①
-------------------------	--	----------------------------------



2700	6500	CAGAT	VGSI and descent angles not coincident (VGSI Angle 3.00/TCH 27).	
OCERA 1.8 NM to RW26		DOMRE	INATE	AKEKE 5 NM Holding Pattern
0.9 NM to RW26		3900	4100	6000 5500
3.00° TCH 40		257°	258°	078°
2880		258°	258°	
0.9 NM	0.9 NM	3.2 NM	2 NM	6 NM
CATEGORY	A	B	C	D
LP MDA	2560-1	306 (400-1)		NA
LNAV MDA	2640-1	386 (400-1)		NA
CIRCLING	2800-1 546 (600-1)	2880-1 626 (700-1)		NA



NW-1, 15 MAY 2025 to 12 JUN 2025

NW-1, 15 MAY 2025 to 12 JUN 2025