

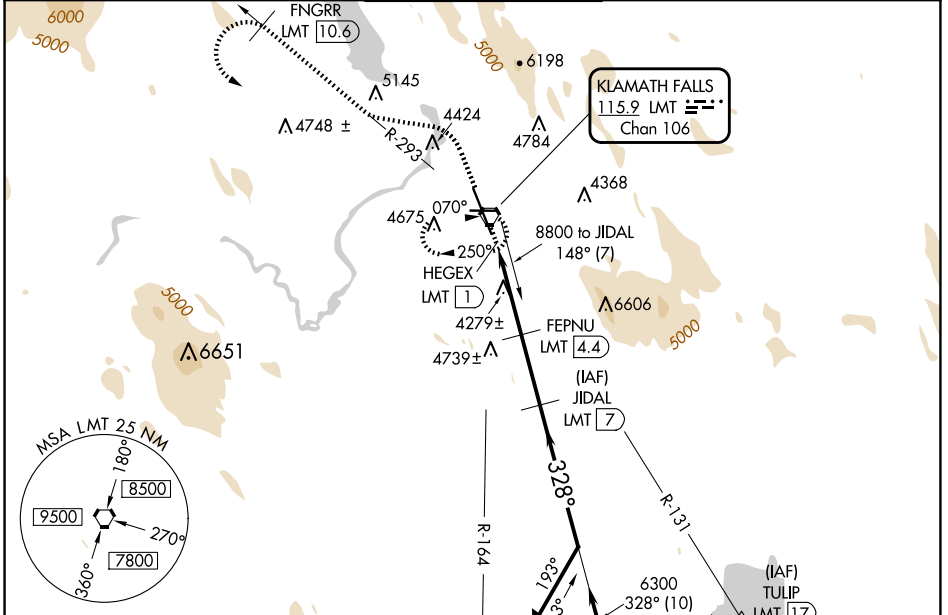
VORTAC LMT <b>115.9</b> Chan <b>106</b>	APP CRS <b>328°</b>	Rwy Idg <b>10302</b> TDZE <b>4095</b> Apt Elev <b>4095</b>
---	------------------------	--

# VOR/DME or TACAN RWY 32

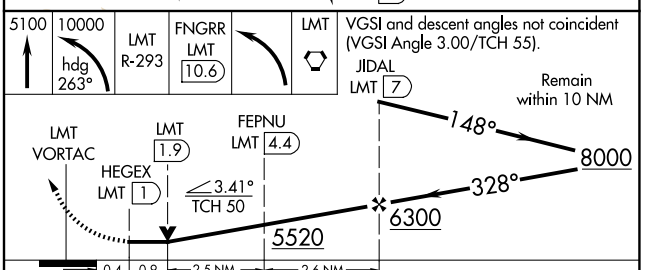
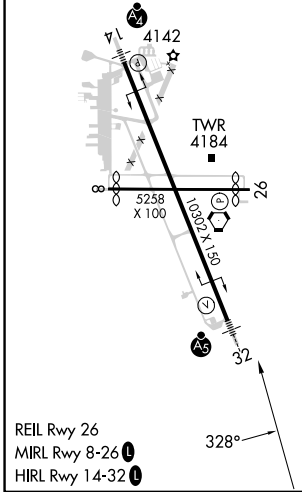
CRATER LAKE/KLAMATH RGNL (LMT)

<p><b>⚠</b> For inop MALS, increase S-32 Cat E visibility to 1¼ mile. Circling NA for Cat D and E east of Rwy 14-32. Procedure turn NA for Cat E aircraft.</p>	<p>MALS</p>	<p>MISSED APPROACH: Climb to 5100 then climbing left turn to 10000 via heading 263° and via LMT VORTAC R-293 to FNGRR/LMT 10.6 DME then left turn direct LMT VORTAC and hold. (TACAN aircraft climb to 5000 then climbing left turn to 9000 via heading 230° and LMT VORTAC R-265 to OLEBY/15 DME.)</p>
--	-------------	---

<p>ATIS <b>126.5 263.0</b></p>	<p>KINGSLEY APP CON * <b>123.675 270.8</b></p>	<p>KINGSLEY TOWER * <b>133.975 (CTAF) 257.8</b></p>	<p>GND CON <b>121.9 348.6</b></p>	<p>UNICOM <b>122.95</b></p>
------------------------------------	--	---	---------------------------------------	---------------------------------



ELEV 4095	<b>D</b>	TDZE 4095
-----------	----------	-----------



CATEGORY	A	B	C	D	E
S-32	4560/24	465 (500-½)	4560/40 465 (500-¾)	4560/50 465 (500-1)	4560/60 465 (500-1¼)
<b>C</b> CIRCLING	4840-1	4980-1¼	5420-3	5660-3	5700-3
	745 (800-1)	885 (900-1¼)	1325 (1400-3)	1565 (1600-3)	1605 (1700-3)

NW-1, 15 MAY 2025 to 12 JUN 2025

NW-1, 15 MAY 2025 to 12 JUN 2025