

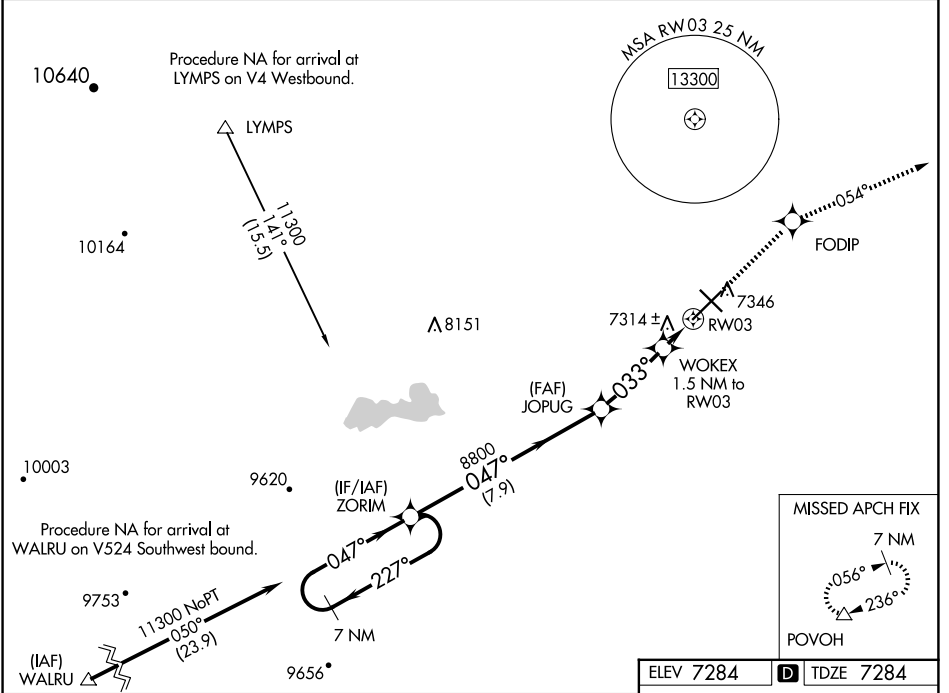
WAAS CH 86325 W03A	APP CRS 033°	Rwy Idg TDZE Apt Elev 8503 7284 7284
--	------------------------	--

RNAV (GPS) RWY 3

LARAMIE RGNL (L.A.R.)

⚠	DME/DME RNP-0.3 NA. Circling to Rwy 30 NA at night. Baro-VNAV NA. Helicopter visibility reduction below 3/4 SM NA.	MISSED APPROACH: Climb to 11000 direct FODIP and on track 054° to POVOH and hold, continue climb-in-hold to 11000.
----------	--	--

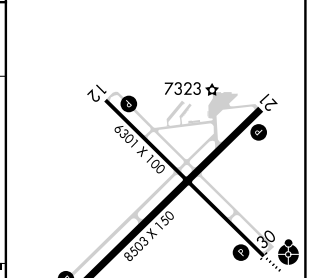
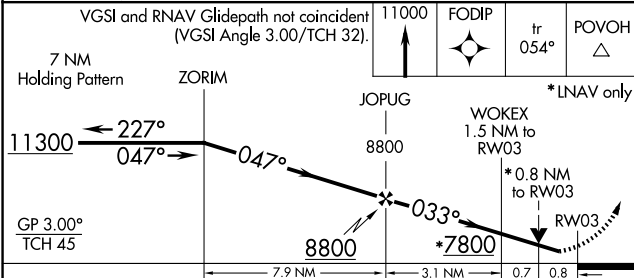
ASOS 135.475	DENVER CENTER 125.9 284.7	UNICOM 123.05 (CTAF) 0
------------------------	-------------------------------------	----------------------------------



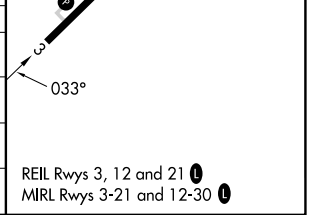
NW-1, 07 AUG 2025 to 04 SEP 2025

NW-1, 07 AUG 2025 to 04 SEP 2025

ELEV 7284	D TDZE 7284
-----------	--------------------



CATEGORY	A	B	C	D
LPV DA		7534-3/4	250 (300-3/4)	
LNAV/VNAV DA		7534-3/4	250 (300-3/4)	
LNAV MDA	7580-1	296 (300-1)	7580-7/8	296 (300-7/8)
CIRCLING	7660-1 376 (400-1)	7760-1 476 (500-1)	7880-1 1/2 596 (600-1 1/2)	7920-2 636 (700-2)



REIL Rwy 3, 12 and 21 0
MIRL Rwy 3-21 and 12-30 0