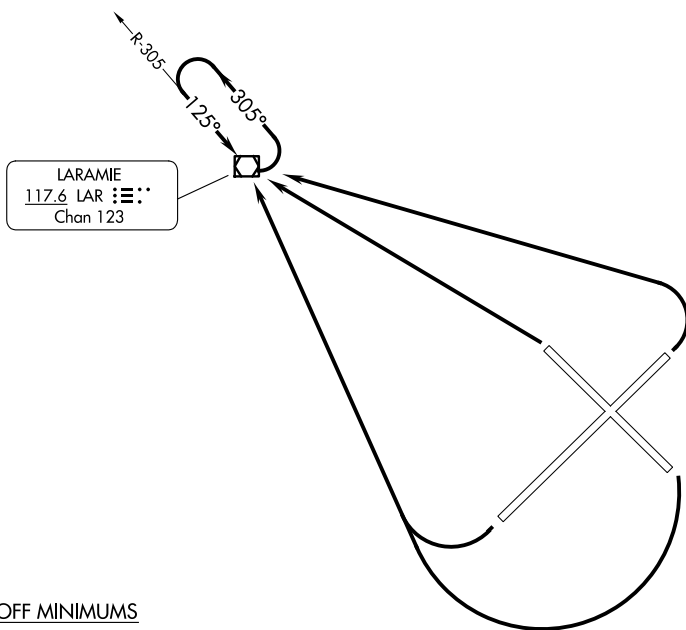


DENVER DEP CON
125.9 284.7
CTAF
123.05
ASOS
135.475



TAKEOFF MINIMUMS

Rwy 3, 12, 21, 30: Standard.

TAKEOFF OBSTACLE NOTES

- Rwy 3: REILS 23' from DER, 150' left of centerline, 7273' MSL.
Vehicles on roadway beginning 882' from DER, across centerline, up to 15' AGL/7310' MSL.
- Rwy 12: Vehicles on roadway 1' from DER, across centerline, 7290' MSL.
Vehicles on roadway beginning 844' from DER, across centerline, up to 15' AGL/7301' MSL.
- Rwy 21: Vehicles on roadway 142' from DER, across centerline, up to 15' AGL/7311' MSL.
Vehicles on roadway beginning 443' from DER, across centerline, 7296' MSL.
- Rwy 30: Vehicles on roadway 63' from DER, across centerline, 7287' MSL.
Vehicles on roadway beginning 464' from DER, across centerline, up to 15' AGL/7302' MSL.

NOTE: Chart not to scale.

DEPARTURE ROUTE DESCRIPTION

TAKEOFF RUNWAY 3: Climbing left turn direct LAR VOR/DME, thence. . . .

TAKEOFF RUNWAYS 12, 21: Climbing right turn direct LAR VOR/DME, thence. . . .

TAKEOFF RUNWAY 30: Climb direct LAR VOR/DME, thence. . . .

. . . .Climb in LAR VOR/DME holding pattern, hold NW, LT, 125° inbound, to cross LAR VOR/DME at or above MEA/MCA for route of flight.

NW-1, 15 MAY 2025 to 12 JUN 2025

NW-1, 15 MAY 2025 to 12 JUN 2025