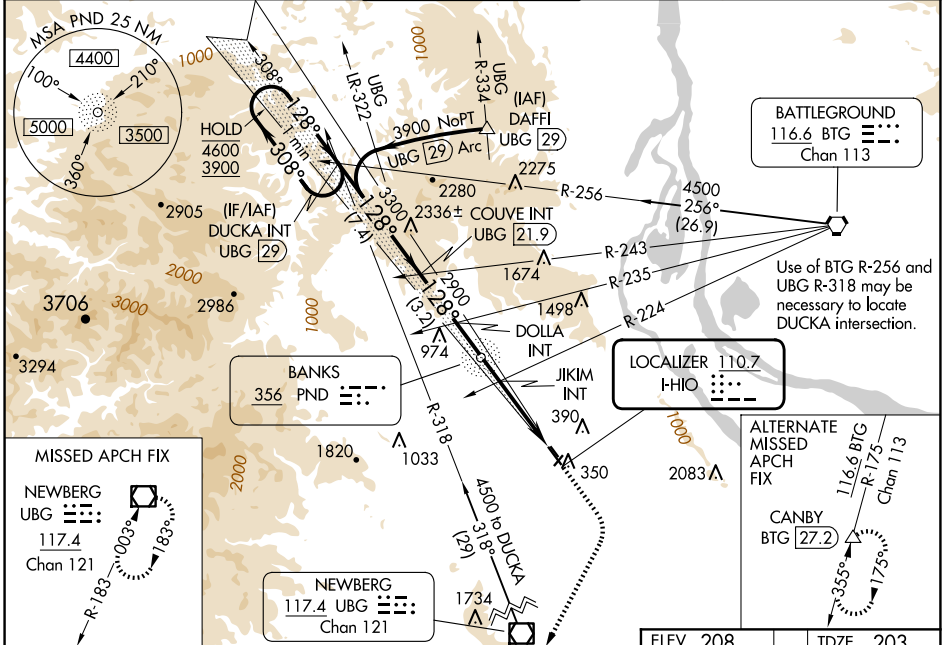


LOC I-HIO <b>110.7</b>	APP CRS <b>128°</b>	Rwy Idg TDZE Apt Elev	<b>6600</b> <b>203</b> <b>208</b>
---------------------------	------------------------	-----------------------------	---

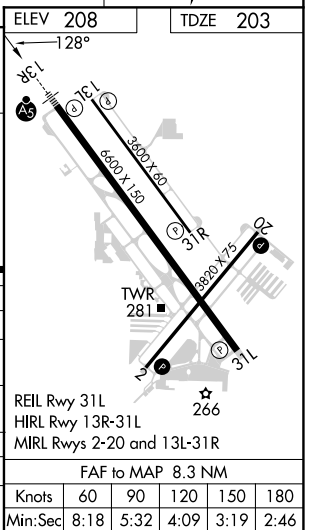
# ILS or LOC RWY 13R

PORTLAND-HILLSBORO (HIO)

<p><b>⚠</b> Circling to Rwy 13L, 31R NA at night. Inop table does not apply to S-LOC Rwy 13R all Cats. For inop ALS, increase JIKIM fix minimums Cat C/D visibility to 1 3/8 SM.</p>	<p>MALS R</p>		<p>MISSED APPROACH: Climb to 1000 then climbing right turn to 3000 direct UBG VOR/DME and hold. Continue climb-in-hold to 3000.</p>	
	<p>ATIS <b>127.65</b></p>	<p>PORTLAND APP CON <b>126.0 269.175</b></p>	<p>HILLSBORO TOWER * <b>119.3(CTAF) 239.3</b></p>	<p>GND CON <b>121.7</b></p>



<p>DUCKA INT UBG [29]</p> <p>One Minute Holding Pattern</p> <p>4600 ← 308°</p> <p>3900 128° →</p> <p>GS 3.00°</p> <p>TCH 48</p>	<p>COUVE INT UBG [21.9]</p> <p>2900</p>	<p>DOLLA INT</p> <p>2900</p>	<p>JIKIM INT</p> <p>*1660</p>	<p>UBG</p>
CATEGORY	A	B	C	D
S-ILS 13R	403/24 200 (200-1/2)			
S-LOC 13R	1660/60 1457 (1500-1 1/4)	1660-1 1/2 1457 (1500-1 1/2)	1660-3	1457 (1500-3)
<b>C</b> CIRCLING	1660-1 1/4 1452 (1500-1 1/4)	1660-1 1/2 1452 (1500-1 1/2)	1660-3	1452 (1500-3)
JIKIM FIX MINIMUMS (DUAL VOR RECEIVERS REQUIRED)				
S-LOC 13R	680/24	477 (500-1/2)	680/50	477 (500-1)
<b>C</b> CIRCLING	680-1 472 (500-1)	720-1 512 (600-1)	720-1 1/2 512 (600-1 1/2)	980-2 1/2 772 (800-2 1/2)



NW-1, 15 MAY 2025 to 12 JUN 2025

NW-1, 15 MAY 2025 to 12 JUN 2025