

VOR/DME GGW <b>113.9</b> Chan <b>86</b>	APP CRS <b>133°</b>	Rwy Idg TDZE Apt Elev	<b>5001</b> <b>2294</b> <b>2296</b>
---	------------------------	-----------------------------	---

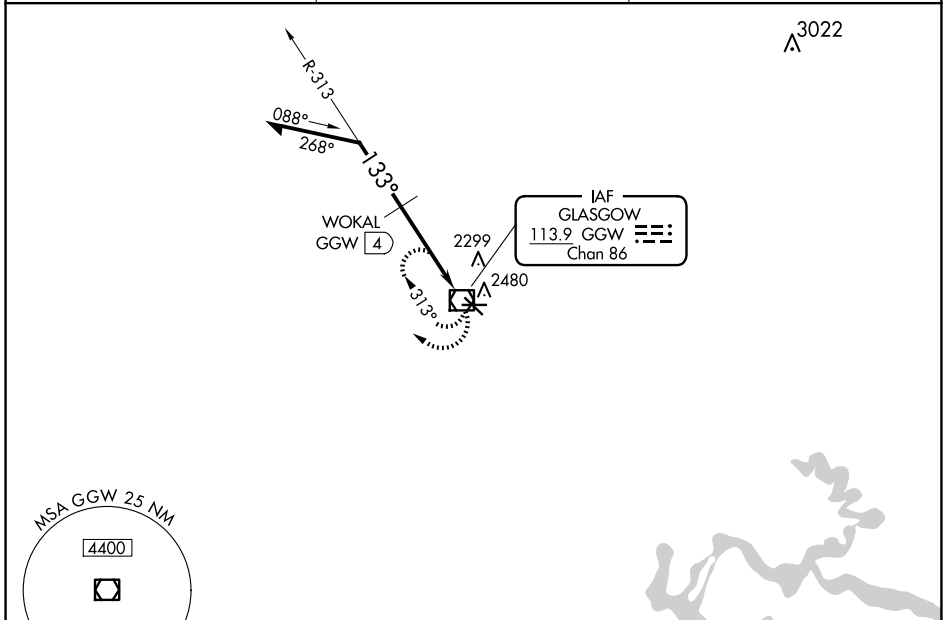
# VOR RWY 12

WOKAL FLD/GLASGOW-VALLEY COUNTY (GGW)

**⚠** When local altimeter setting not received, use Wolf Point altimeter setting and increase all MDAs 160 feet and increase S-12 and Circling visibility Cats B/D ¼ SM, Cat C ½ SM and WOKAL fix minimums increase all MDAs 160 feet and increase visibility S-12 Cats C/D ½ SM, and Circling Cat C ¼ SM, Cat D ½ SM.

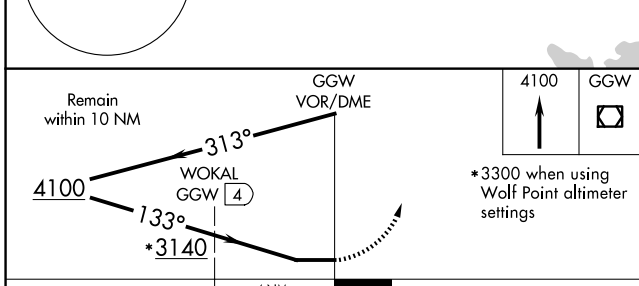
**MISSED APPROACH:**  
Climb to 4100 in GGW  
VOR/DME holding pattern.

ASOS <b>135.175</b>	SALT LAKE CENTER <b>126.85 305.2</b>	UNICOM <b>122.8 (CTAF)</b>
------------------------	---	-------------------------------

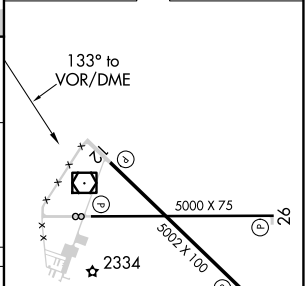


NW-1, 15 MAY 2025 to 12 JUN 2025

NW-1, 15 MAY 2025 to 12 JUN 2025



ELEV 2296	<b>D</b>	TDZE 2294
-----------	----------	-----------



CATEGORY	A	B	C	D
S-12	3140-1 846 (900-1)	3140-1¼ 846 (900-1¼)	3140-2½ 846 (900-2½)	3140-2¾ 846 (900-2¾)
CIRCLING	3140-1¼ 844 (900-1¼)	844 (900-1¼)	3140-2½ 844 (900-2½)	3140-2¾ 844 (900-2¾)
WOKAL FIX MINIMUMS				
S-12	2700-1 406 (500-1)	406 (500-1)	2700-1¼ 406 (500-1¼)	406 (500-1¼)
CIRCLING	2780-1 484 (500-1)	484 (500-1)	2780-1½ 484 (500-1½)	2900-2 604 (700-2)

REIL Rwy 8, 12, 26 and 30 **⚠**  
MIRL Rwy 8-26 and 12-30 **⚠**

# VOR RWY 12