

WAAS CH 99620 W30A	APP CRS 303°	Rwy Idg TDZE Apt Elev	5002 2294 2296
--	------------------------	-----------------------------	---

RNAV (GPS) RWY 30

WOKAL FIELD/GLASGOW INTL (GGW)

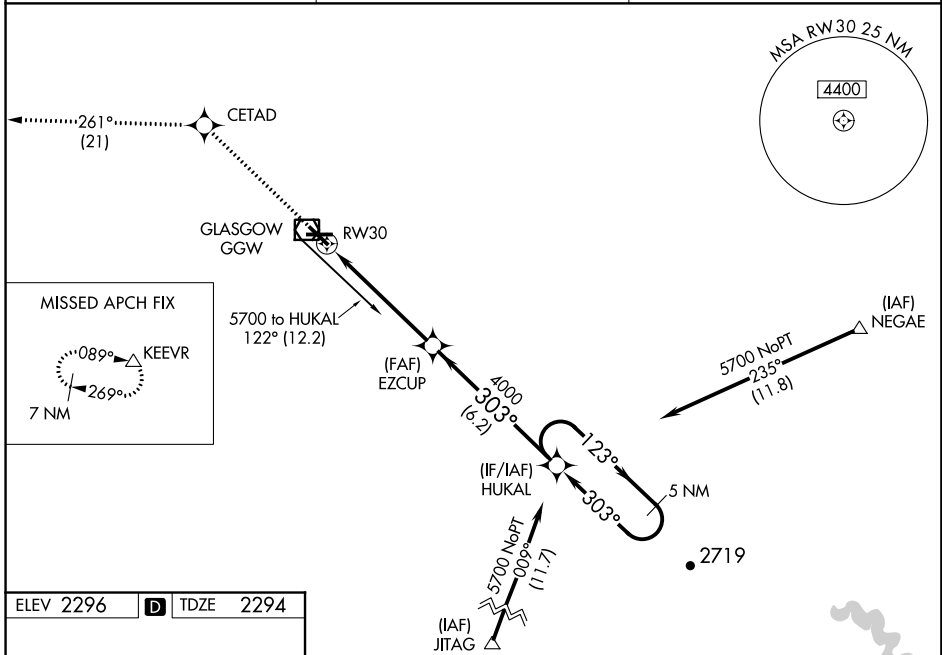
⚠ DME/DME RNP-0.3 NA. VDP and Baro-VNAV NA when using Wolf Point altimeter setting. For uncompensated Baro-VNAV systems, LNAV-VNAV NA below -30°C (-22°F) or above 29°C (84°F). When local altimeter setting not received, use Wolf Point altimeter setting and increase all DA 141 feet and all MDA 160 feet and increase LPV visibility all Cats 3/8 mile, LNAV/VNAV visibility all Cats 1/2 mile, LNAV visibility Cats C and D 1/2 mile, and Circling visibility Cats C and D 1/2 mile.

MISSED APPROACH: Climb to 6500 direct CETAD and on track 261° to KEEVR and hold.

ASOS
135.175

SALT LAKE CENTER
126.85 305.2

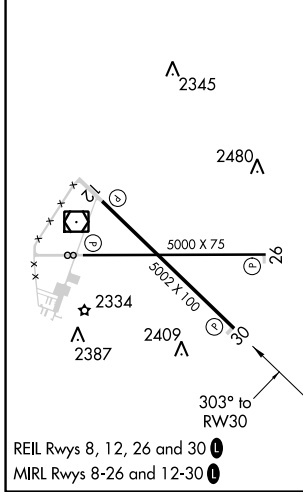
UNICOM
122.8 (CTAF) 0



NW-1, 21 JUN 2018 to 19 JUL 2018

NW-1, 21 JUN 2018 to 19 JUL 2018

ELEV 2296	D	TDZE 2294
-----------	----------	-----------



CATEGORY	A	B	C	D
LPV DA		2494-3/8	200 (200-3/8)	
LNAV/VNAV DA		2587-1	293 (300-1)	
LNAV MDA	2700-1	406 (500-1)	2700-1 1/8	406 (500-1 1/8)
CIRCLING	2780-1	484 (500-1)	2780-1 1/2 484 (500-1 1/2)	2860-2 564 (600-2)