

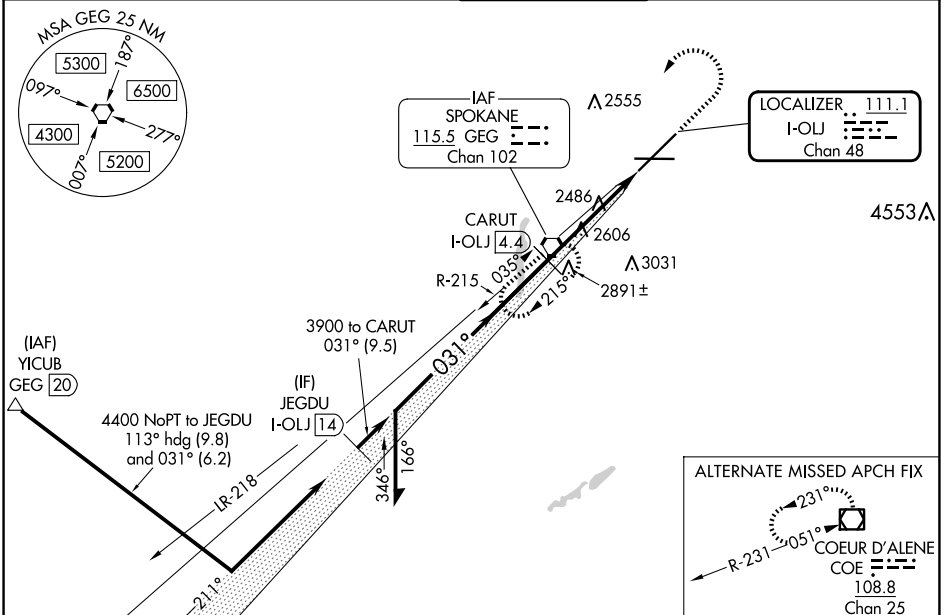
LOC/DME I-OLJ <b>111.1</b> Chan 48	APP CRS <b>031°</b>	Rwy Ldg TDZE <b>2385</b> Apt Elev <b>2385</b>
--	------------------------	---

# ILS RWY 3 (SA CAT I)

SPOKANE INTL (GEG)

<p>Requires specific OPSPEC, MSPEC, or LOA approval.</p>	<p>ALSF-2</p>	<p>MISSED APPROACH: Climb to 2900 then climbing left turn to 4200 direct GEG VORTAC and hold, continue climb-in-hold to 4200.</p>

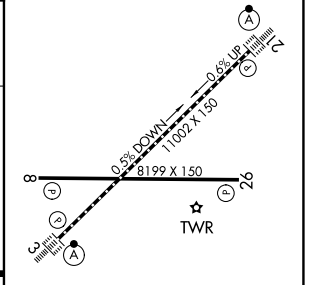
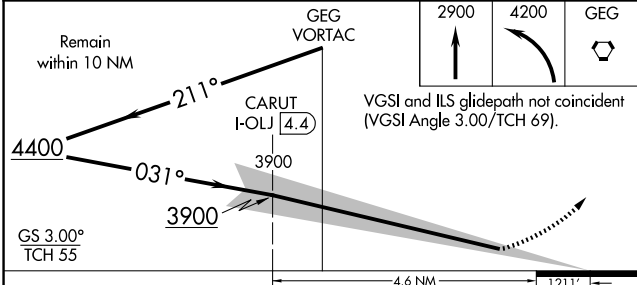
<p>ATIS</p> <p><b>124.325 254.375</b></p>	<p>SPOKANE APP CON</p> <p><b>123.75 282.25</b> (205°-025°) <b>133.35 263.0</b> (026°-204°)</p>	<p>SPOKANE TOWER</p> <p><b>118.3 278.3</b></p>	<p>GND CON</p> <p><b>121.9 348.6</b></p>	<p>CLNC DEL</p> <p><b>127.55</b></p>
---	--	--	--	--------------------------------------



NW-1, 07 AUG 2025 to 04 SEP 2025

NW-1, 07 AUG 2025 to 04 SEP 2025

ELEV 2385	<b>D</b>	TDZE 2385
-----------	----------	-----------



CATEGORY	A	B	C	D
S-ILS 3	RA 154/14 150 DA 2535			

**SA CATEGORY I ILS - SPECIAL AIRCREW & AIRCRAFT CERTIFICATION REQUIRED**

<p>TDZ/CL Rwys 3 and 21</p> <p>REIL Rwys 8 and 26</p> <p>HIRL Rwy 3-21</p> <p>MIRL Rwy 8-26</p>
---