


WAAS CH <b>77905</b> <b>W23A</b>	APP CRS <b>234°</b>	Rwy Idg TDZE Apt Elev	<b>7300</b> <b>7143</b> <b>7143</b>
--	------------------------	-----------------------------	---

# RNAV (GPS) RWY 23


EVANSTON-UINTA COUNTY BURNS FLD (E V W)

RNP APCH - GPS.

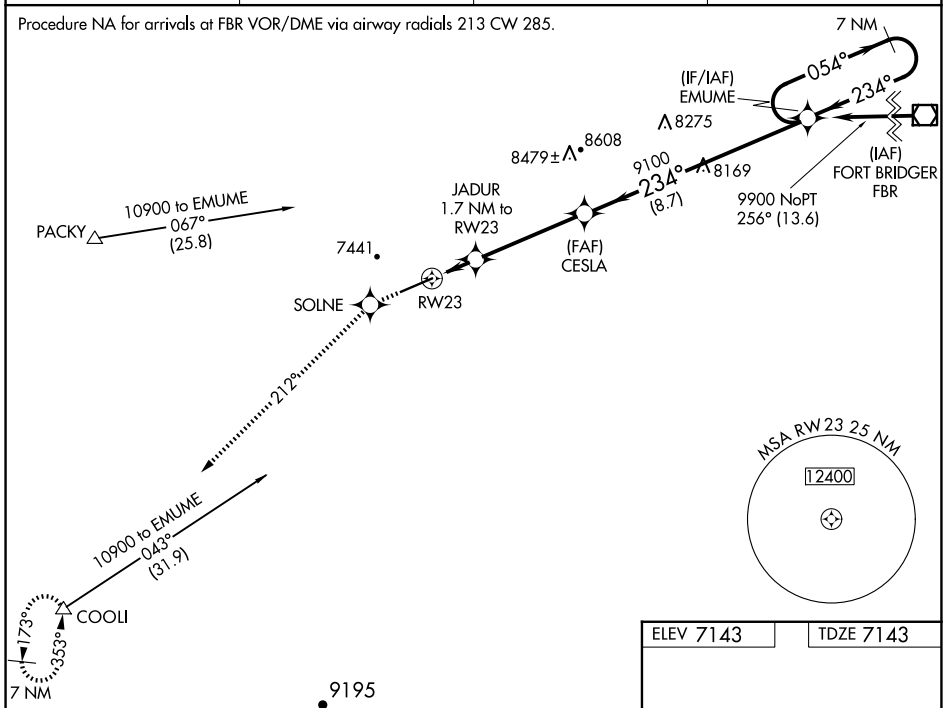
**⚠** For inoperative MALS/R, increase LPV all Cats visibility to 1, LNAV/VNAV Cat D to 1 and LNAV Cat D to 1¼. When local altimeter setting not received, procedure NA. For uncompensated Baro-VNAV systems, LNAV/VNAV NA below -29°C or above 34°C.

MALS/R 

MISSED APPROACH: Climb to 12000 direct SOLNE and via 212° track to COOLI and hold, continue climb-in-hold to 12000.

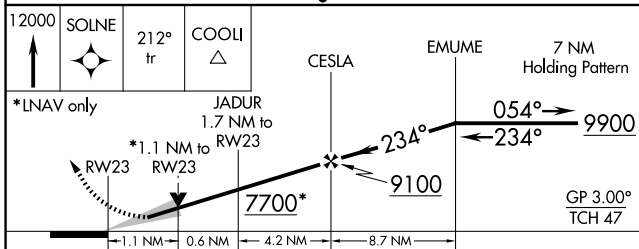
ASOS <b>120.0</b>	SALT LAKE CENTER <b>127.7 354.125</b>	GCO <b>121.72</b>	UNICOM <b>123.0</b> (CTAF) 
----------------------	--	----------------------	---

Procedure NA for arrivals at FBR VOR/DME via airway radials 213 CW 285.

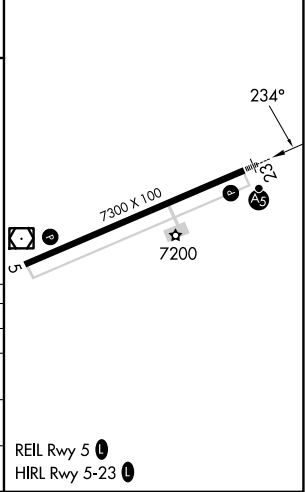


NW-1, 15 MAY 2025 to 12 JUN 2025


NW-1, 15 MAY 2025 to 12 JUN 2025



ELEV 7143	TDZE 7143
-----------	-----------



CATEGORY	A	B	C	D
LPV DA	7393-½		250 (300-½)	
LNAV/VNAV DA	7443-½		300 (300-½)	
LNAV MDA	7520-½		377 (400-½)	
CIRCLING	7680-1 537 (600-1)	7760-1 617 (700-1)	7800-1¾ 657 (700-1¾)	8000-2¾ 857 (900-2¾)

REIL Rwy 5   
HIRL Rwy 5-23 