



LOC/DME I-EVW <b>108.9</b> Chan 26	APP CRS <b>234°</b>	Rwy Idg <b>7300</b> TDZE <b>7143</b> Apt Elev <b>7143</b>
--	------------------------	---

# ILS or LOC/DME RWY 23

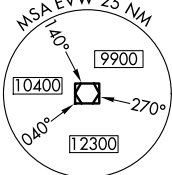
EVANSTON-UINTA COUNTY BURNS FLD (E V W)

**⚠** For inoperative MALSR, increase S-LOC 23 Cat D visibility to 1 mile. When local altimeter setting not received, procedure NA.

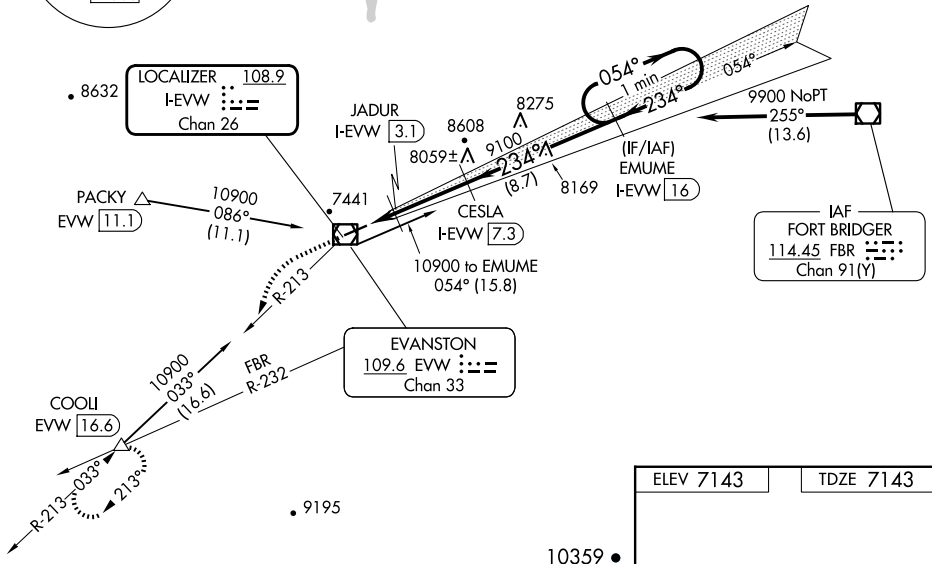
**MALSR**  MISSED APPROACH: Climb to 7600 then climbing left turn to 12000 via EVW VOR/DME R-213 to COOLI/EVW VOR/DME 16.6 DME and hold, continue climb-in-hold to 12000.

ASOS <b>120.0</b>	SALT LAKE CENTER <b>127.7 354.125</b>	GCO <b>121.72</b>	UNICOM <b>123.0 (CTAF)</b> 
----------------------	--	----------------------	---

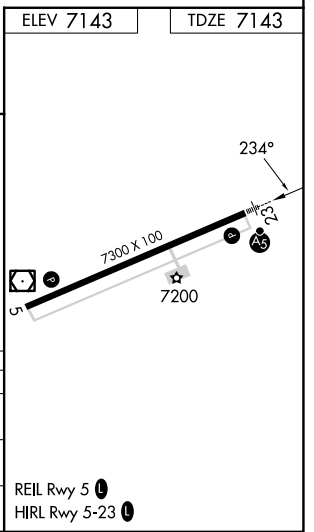
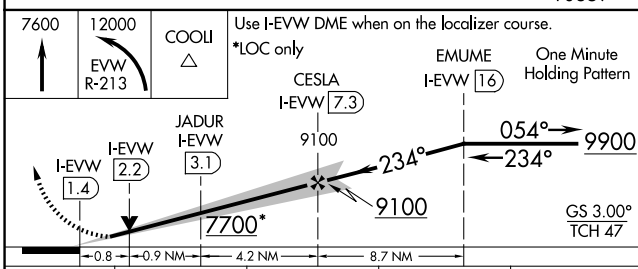
Procedure NA for arrivals at FBR VOR/DME via airway radials 213 CW 285.



NW-1, 15 MAY 2025 to 12 JUN 2025



NW-1, 15 MAY 2025 to 12 JUN 2025



CATEGORY	A	B	C	D
S-ILS 23	7343-1/2		200 (200-1/2)	
S-LOC 23	7440-1/2		297 (300-1/2)	7440-3/4 297 (300-3/4)
CIRCLING	7680-1 537 (600-1)	7760-1 617 (700-1)	7800-1 3/4 657 (700-1 3/4)	8000-2 3/4 857 (900-2 3/4)