

APP CRS	Rwy Idg	<b>6101</b>
<b>183°</b>	TDZE	<b>2211</b>
	Apt Elev	<b>2211</b>

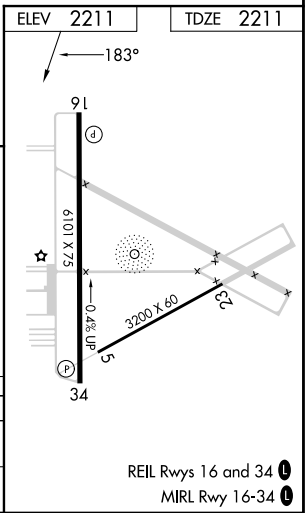
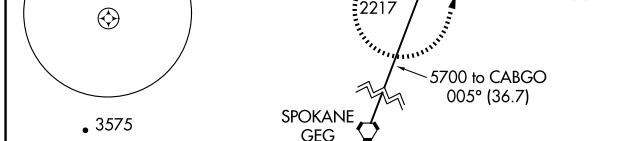
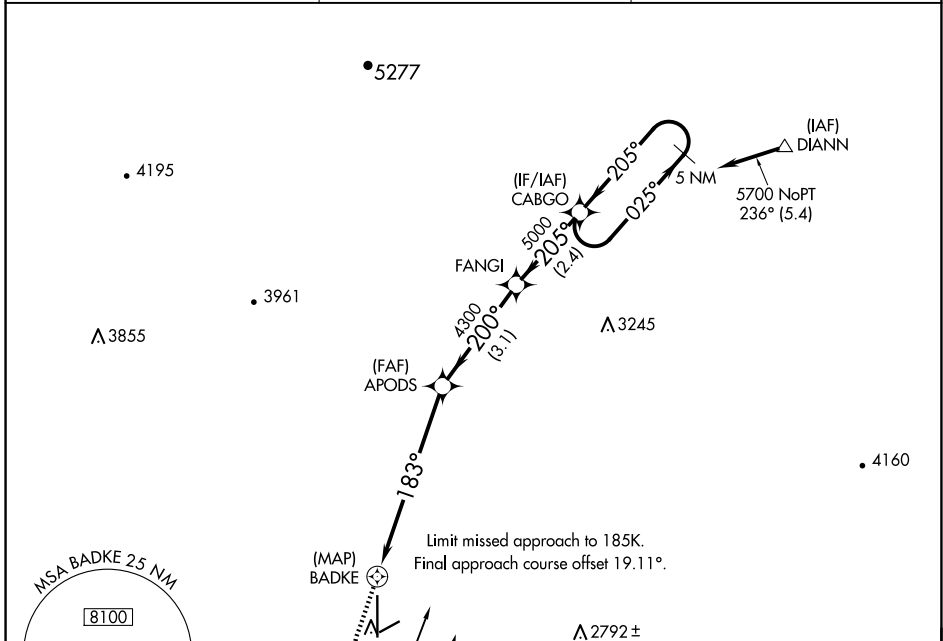
# RNAV (GPS) RWY 16

DEER PARK (DEW)

When local altimeter setting not received, procedure NA.  
 DME/DME RNP-0.3 NA.  
 Helicopter visibility reduction below 3/4 SM NA.  
 Circling NA west of Rwy 16-34.

MISSED APPROACH: Climb to 3500 then climbing left turn to 5700 direct CABGO and hold.

ASOS <b>135.175</b>	SPOKANE APP CON <b>123.75 282.25</b>	UNICOM <b>123.0 (CTAF)</b>
------------------------	---	-------------------------------



	3500	5700	CABGO	
	↑	↶	✦	
	APODS 1.1 NM to BADKE 3.50° TCH 38 0.5 NM 1.1 NM 4 NM 3.1 NM 2.4 NM			
CATEGORY	A	B	C	D
RNAV MDA	2640-1	429 (500-1)	2640-1 1/4	429 (500-1 1/4)
CIRCLING	2700-1	489 (500-1)	2700-1 1/2	2860-2
			489 (500-1 1/2)	649 (700-2)

NW-1, 15 MAY 2025 to 12 JUN 2025

NW-1, 15 MAY 2025 to 12 JUN 2025