

# ILS or LOC RWY 12

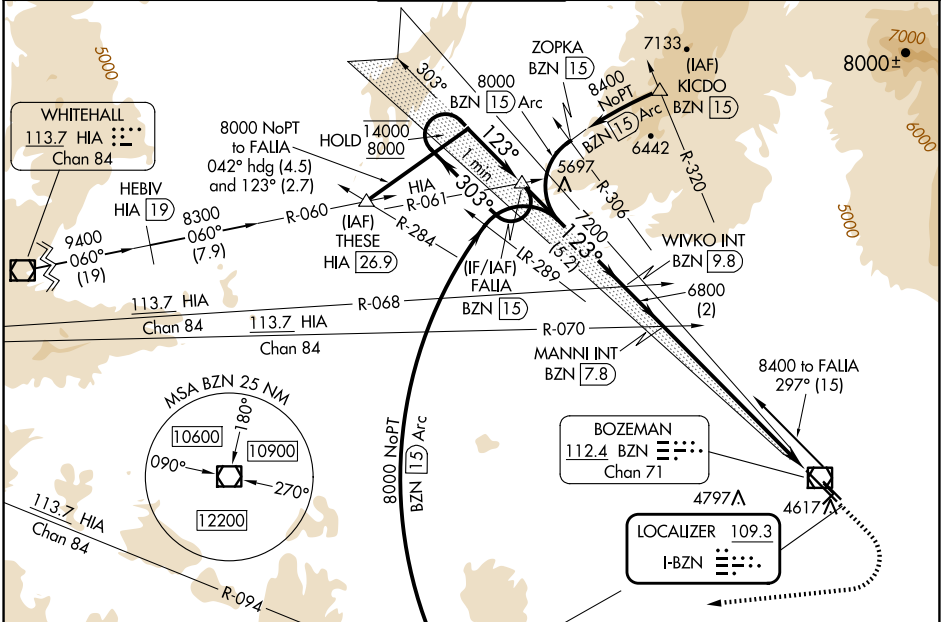
## BOZEMAN YELLOWSTONE INTL (BZN)

LOC I-BZN <b>109.3</b>	APP CRS <b>123°</b>	Rwy ldg <b>8994</b>
		TDZE <b>4443</b>
		Apt Elev <b>4473</b>

**RADAR required for procedure entry at BRIGR INT.**

**MALS R** MISSED APPROACH: Climb to 5200 then climbing right turn to 9000 on heading 250° and on BZN VOR/DME. DME use requires simultaneous reception of I-BZN and BZN DME. For inop ALS, increase S-LOC 12 Cat C/D visibility to 2 SM. Continue climb-in-hold to 9000.

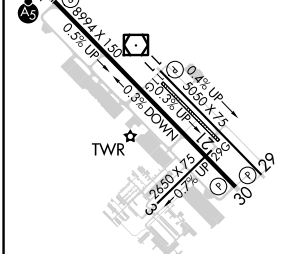
ATIS <b>135.425</b>	BIG SKY APP CON ★ <b>118.975 226.675</b>	BOZEMAN TOWER★ <b>118.2 (CTAF) 0</b>	GND CON <b>121.8</b>	UNICOM <b>122.95</b>
------------------------	---	---	-------------------------	-------------------------



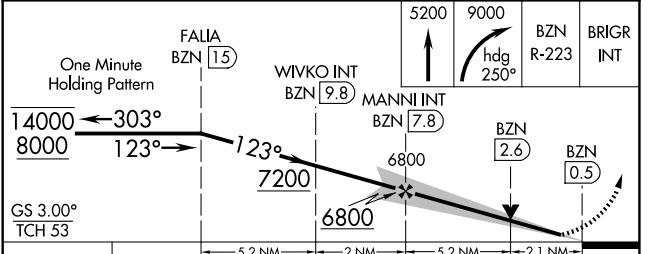
NW-1, 15 MAY 2025 to 12 JUN 2025

NW-1, 15 MAY 2025 to 12 JUN 2025

ELEV <b>4473</b>	TDZE <b>4443</b>
Rwy 11G-29G: 2802 X 80	



REIL Rwy 30	HIRL Rwy 12-30	MIRL Rwy 11-29			
FAF to MAP 7.3 NM					
Knots	60	90	120	150	180
Min:Sec	7:18	4:52	3:39	2:55	2:26



CATEGORY	A	B	C	D
S-ILS 12	4643-1/2 200 (200-1/2)			
S-LOC 12	5160-1/2	717 (700-1/2)	5160-1 5/8	717 (700-1 5/8)
<input checked="" type="checkbox"/> CIRCLING	5160-1	687 (700-1)	5160-2	5360-3
			687 (700-2)	887 (900-3)