

WAAS CH 70407 W29A	APP CRS 291°	Rwy Idg TDZE 127 Apt Elev 145	5478
----------------------------------------	------------------------	---------------------------------------------------	-------------

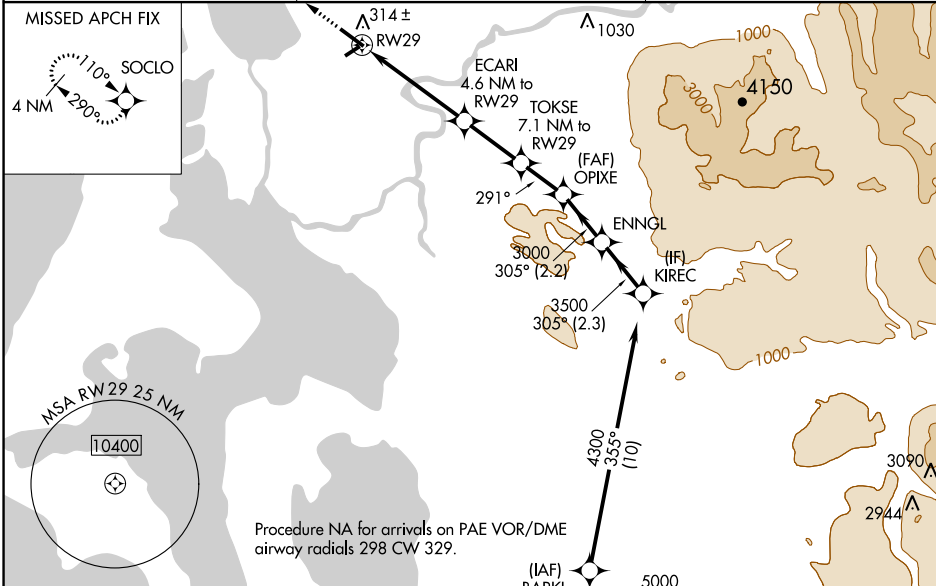
RNAV (GPS) RWY 29

SKAGIT RGNL (BVS)

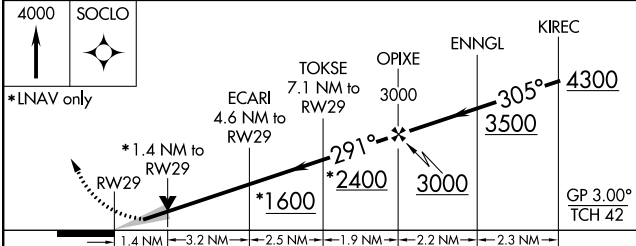
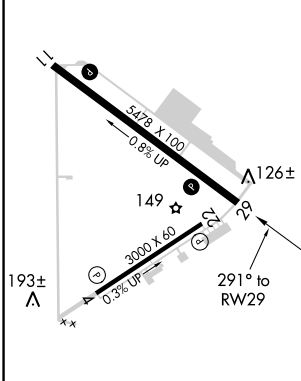
⚠ Circling to Rwy 04 NA at night. For uncompensated Baro-VNAV systems, LNAV/VNAV NA below -15°C (5°F) or above 54°C (130°F). Baro-VNAV and VDP NA when using Friday Harbor altimeter setting. DME/DME RNP-0.3 NA. When local altimeter setting not received use Friday Harbor altimeter setting: increase LPV DA to 438 feet, LNAV/VNAV DA to 536 feet and all Cats visibilities ¼ SM; increase all MDA 60 feet and Circling Cats C and D visibility ½ SM.

MISSED APPROACH: Climb to 4000 direct SOCL0 and hold, continue climb-in-hold to 4000.

AWOS-3 121.125	WHIDBEY APP CON 120.7 270.8	UNICOM 123.075 (CTAF) 0
--------------------------	---------------------------------------	------------------------------------------



ELEV 145	TDZE 127
-----------------	-----------------



CATEGORY	A	B	C	D
LPV DA		377-7/8	250 (300-7/8)	
LNAV/VNAV DA		475-1 1/4	348 (400-1 1/4)	
LNAV MDA	580-1	453 (500-1)	580-1 3/8	453 (500-1 3/8)
CIRCLING	680-1 535 (600-1)	700-1 555 (600-1)	700-1 1/2 555 (600-1 1/2)	1000-2 3/4 855 (900-2 3/4)

LIRL Rwy 4-22 **0**
REIL Rws 11 and 29 **0**
MIRL Rwy 11-29 **0**

NW-1, 11 OCT 2018 to 08 NOV 2018

NW-1, 11 OCT 2018 to 08 NOV 2018