

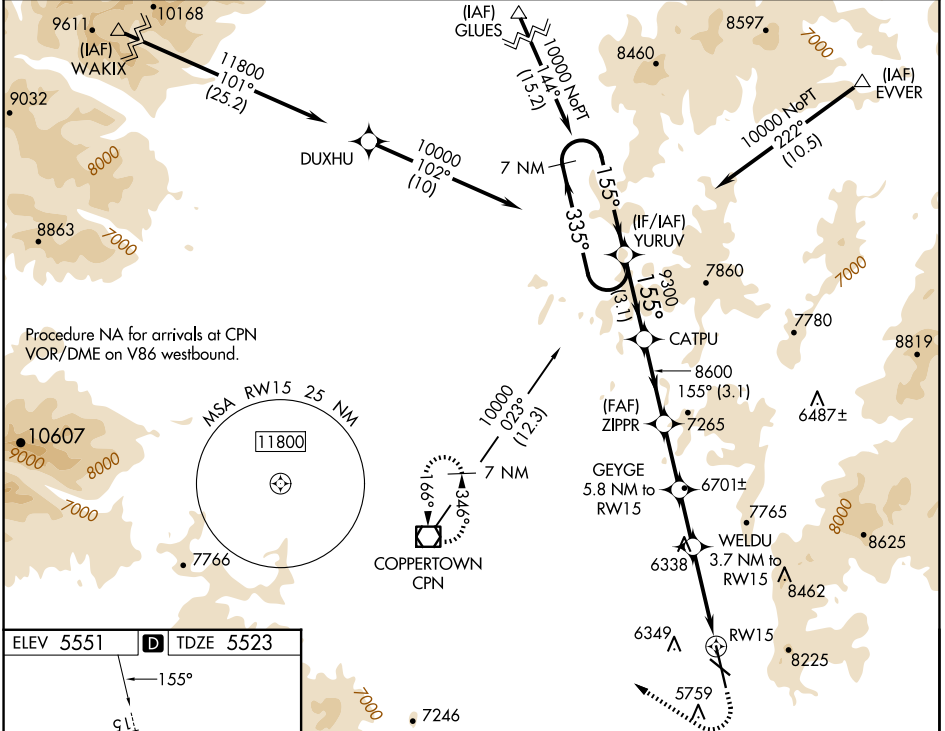
WAAS CH 56341 W15A	APP CRS 155°	Rwy Idg TDZE 5523 Apt Elev 5551
--	------------------------	---

RNAV (GPS) RWY 15

BERT MOONEY (BTM)

<p>⚠ Circling NA northeast of Rwy 15-33. DME/DME RNP-0.3 NA. For inop ALS, increase LPV all Cats visibility to 2 1/2 SM, increase LPV# Cat C/D visibility to 7/8 SM. Inop table does not apply to LNAV Cats C/D.</p> <p>⚠ -25°C</p>	<p>MALS R</p>	<p>MISSED APPROACH: (Do not exceed 190K until 7100) Climb to 7100 then climbing right turn to 11000 direct CPN VOR/DME and hold, continue climb-in-hold to 11000. #Missed approach requires minimum climb of 365 feet per NM to 8700.</p>
---	---------------	---

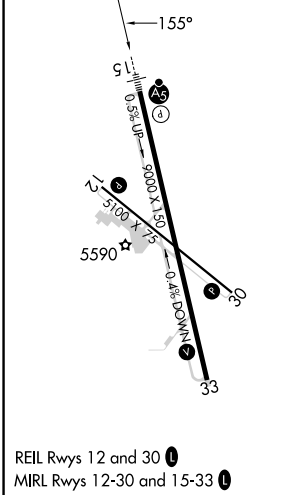
ASOS 135.175	SALT LAKE CENTER 132.4 338.3	UNICOM 123.0 (CTAF)
------------------------	--	-------------------------------



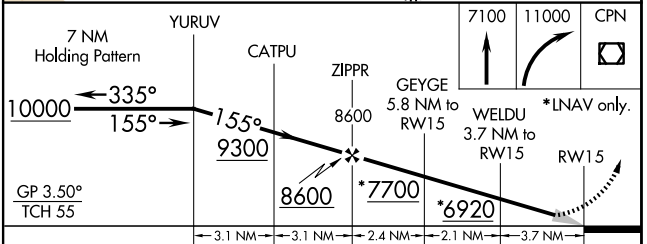
NW-1, 15 MAY 2025 to 12 JUN 2025

NW-1, 15 MAY 2025 to 12 JUN 2025

ELEV 5551	D	TDZE 5523
-----------	----------	-----------



REIL Rws 12 and 30 **Ⓛ**
MIRL Rws 12-30 and 15-33 **Ⓛ**



CATEGORY	A	B	C	D
LPV DA	6281-1/8 758 (800-1/8)			
LPV DA#	5825-1/2 302 (300-1/2)			
LNAV MDA	6780-3/4 1257 (1300-3/4)	6780-1 1257 (1300-1)	6780-3 1257 (1300-3)	1257 (1300-3)
C CIRCLING	6780-1/4 1229 (1300-1/4)		7060-3 1509 (1600-3)	7120-3 1569 (1600-3)