
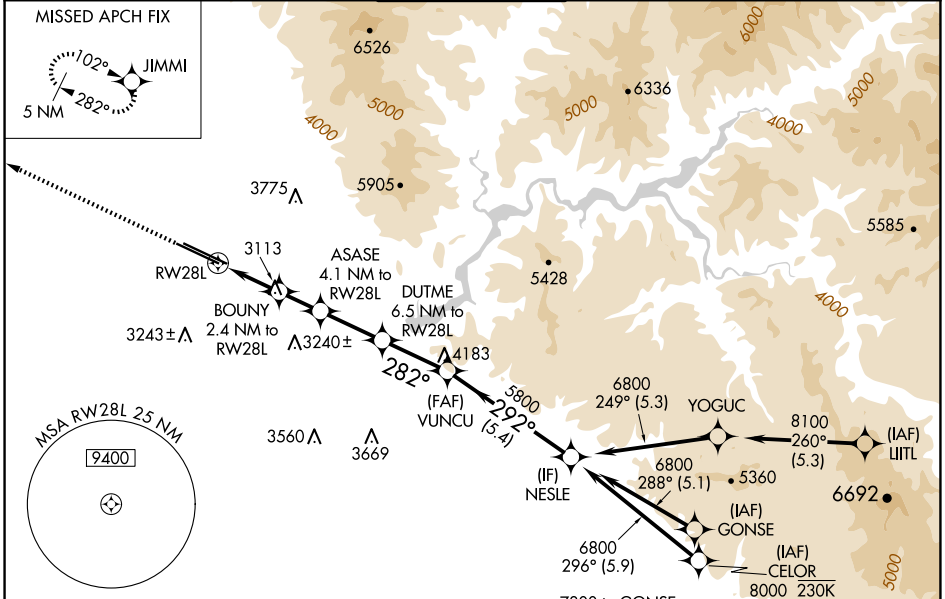


WAAS CH <b>7702</b> <b>W28A</b>	APP CRS <b>282°</b>	Rwy Idg TDZE Apt Elev	<b>9763</b> <b>2858</b> <b>2872</b>
---------------------------------------	------------------------	-----------------------------	---

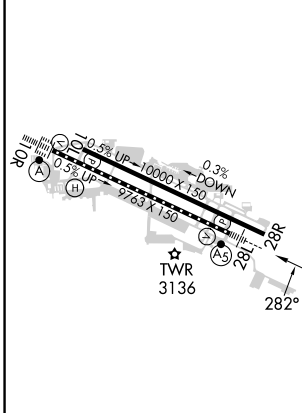
# RNAV (GPS) Y RWY 28L

BOISE AIR TRML/GOWEN FLD (BOI)

RNP APCH - GPS.		BOISE TOWER <b>118.1 257.8</b>		GND CON <b>121.7 348.6</b>	CLNC DEL <b>125.9 323.2</b>
<p><b>⚠</b> Circling NA north of Rwy 10L-28R. For uncompensated Baro-VNAV systems, LNAV/VNAV NA below -14°C or above 54°C. For inop ALS, increase LPV all Cats visibility to RVR 4500, and LNAV/VNAV all Cats visibility to RVR 6000.</p>		<p>MALSR</p> 		<p>MISSED APPROACH: Climb to 6000 direct JIMMI and hold, continue climb-in-hold to 6000.</p>	
D-ATIS <b>123.9 290.4</b>	BIG SKY APP CON <b>119.6 269.4</b>				



ELEV 2872	<b>D</b>	TDZE 2858
-----------	----------	-----------



6000	JIMMI	VGS1 and RNAV glidepath not coincident (VGS1 Angle 3.00/TCH 50).		NESLE
		BOUNY 2.4 NM to RWY 28L	DUTME 6.5 NM to RWY 28L	5800
		ASASE 4.1 NM to RWY 28L		6800
		1.4 NM to RWY 28L		4980
				4200
				3680
				6800
				5800
				GP 3.00° TCH 50

	CATEGORY	A	B	C	D
LPV	DA		3160/24	302 (300-½)	
LNAV/VNAV	DA		3267/40	409 (400-¾)	
LNAV	MDA	3380/24	522 (600-½)	3380/55	522 (600-1)
<b>C</b>	CIRCLING	3440-1	568 (600-1)	3640-2¼ 768 (800-2¼)	3820-3 948 (1000-3)

REIL Rwy 10L  
TDZ/CL Rwys 10R and 28L  
HIRL Rwys 10L-28R and 10R-28L

NW-1, 15 MAY 2025 to 12 JUN 2025

NW-1, 15 MAY 2025 to 12 JUN 2025