

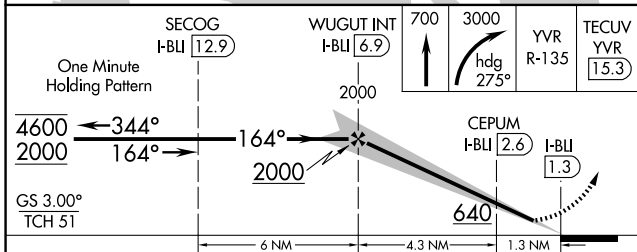
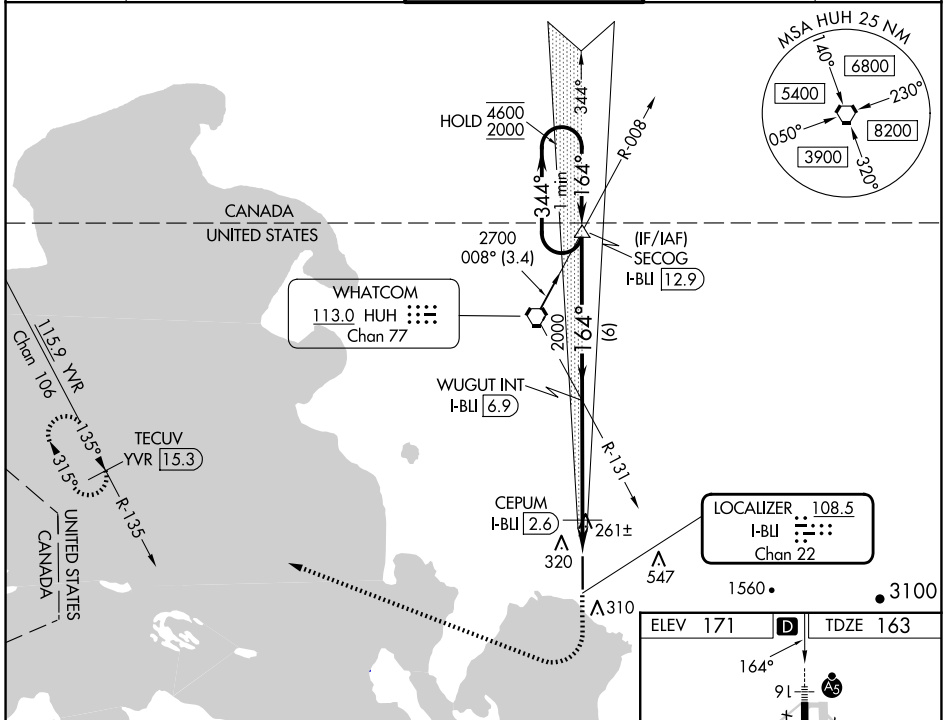
LOC/DME I-BLI 108.5 Chan 22	APP CRS 164°	Rwy Idg TDZE Apt Elev 6700 163 171
------------------------------------------	------------------------	------------------------------------------------------------------------

ILS or LOC RWY 16

BELLINGHAM INTL (BLI)

DME or RADAR required.	MALSR	MISSED APPROACH: Climb to 700 then climbing right turn to 3000 on heading 275° and on YVR VOR/DME R-135 to TECUV/YVR 15.3 DME and hold.
<p>▼ Autopilot coupled approach NA below 500. For inop ALS, increase S-LOC Cat C/D visibility to RVR 6000.</p> <p>▲ *RVR 1800 authorized with use of FD or AP or HUD to DA (NA when using FHR altimeter setting).</p>		

ATIS 134.45	VICTORIA TERMINAL APP CON 132.7 290.8	BELLINGHAM TOWER * 124.9 (CTAF) 0 379.3	GND CON 127.4 379.3	UNICOM 122.95
-----------------------	-------------------------------------------------	----------------------------------------------------------	-------------------------------	-------------------------



ELEV 171	D	TDZE 163			
REIL Rwy 34	34	TWR 247			
HIRL Rwy 16-34					
FAF to MAP 5.6 NM					
Knots	60	90	120	150	180
Min:Sec	5:36	3:44	2:48	2:14	1:52

NW-1, 15 MAY 2025 to 12 JUN 2025

NW-1, 15 MAY 2025 to 12 JUN 2025