

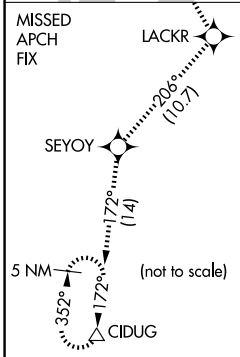
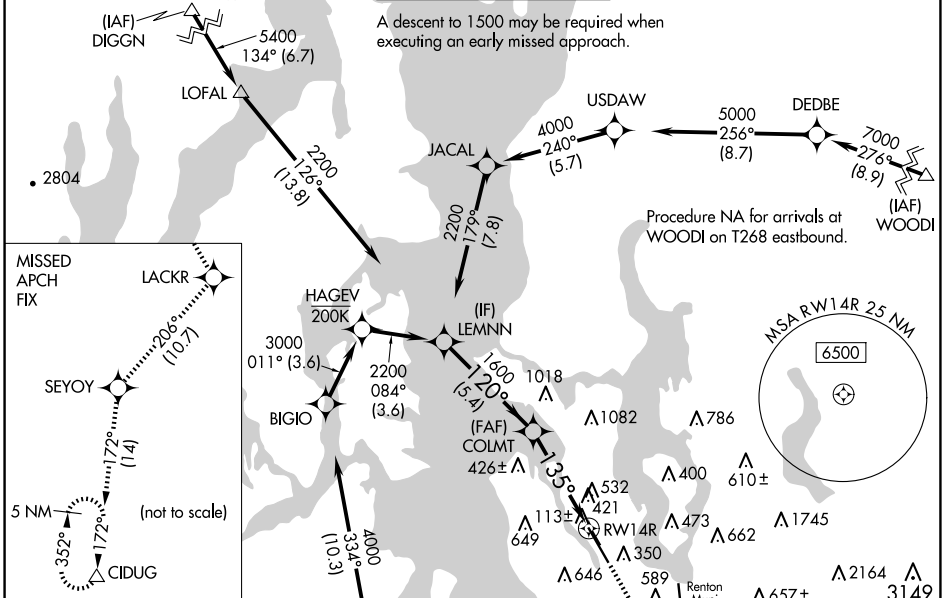
WAAS CH <b>92568</b> <b>W14A</b>	APP CRS <b>135°</b>	Rwy Idg TDZE Apt Elev	<b>9120</b> <b>18</b> <b>22</b>
--	------------------------	-----------------------------	---------------------------------------

# RNAV (GPS) Y RWY 14R

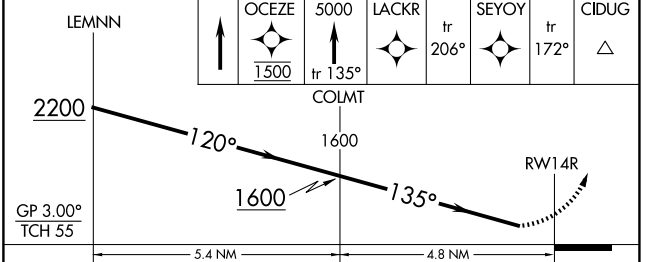
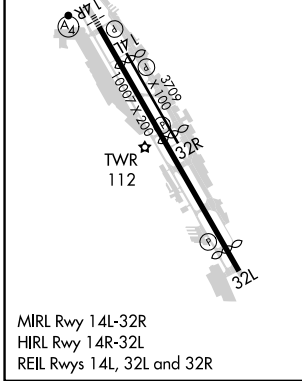
BOEING FLD/KING COUNTY INTL (BFI)

RNP APCH - GPS.		MALSF 	MISSED APPROACH: Climb direct OCEZE, cross OCEZE at 1500, then climb to 5000 on the RNAV missed approach route to CIDUG and hold.
RADAR required for missed approach.			
<p>▼ For uncompensated Baro-VNAV systems, LNAV/VNAV NA below -6°C or above 54°C. For inop ALS, increase LPV visibility to RVR 4500. Rwy 14R helicopter visibility reduction below RVR 4000 NA.</p>			

ATIS <b>127.75</b>	SEATTLE APP CON <b>125.9 306.9</b>	BOEING TOWER <b>120.6 257.8</b>	GND CON <b>121.9</b>	CLNC DEL <b>132.4</b>
-----------------------	---------------------------------------	------------------------------------	-------------------------	--------------------------



ELEV 22	<b>D</b>	TDZE 18
---------	----------	---------



CATEGORY	A	B	C	D
LPV DA	301/40 283 (300-¾)			
LNAV/VNAV DA	744-1¾ 726 (800-1¾)			

NW-1, 15 MAY 2025 to 12 JUN 2025

NW-1, 15 MAY 2025 to 12 JUN 2025