

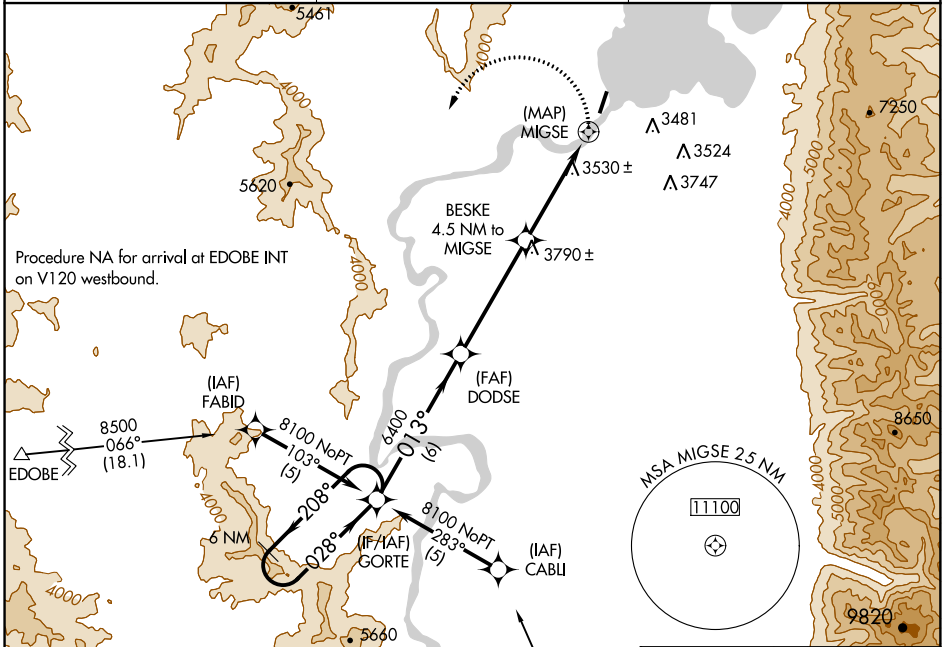
APP CRS 013°	Rwy Idg TDZE Apt Elev	4195 2941 2941
------------------------	-----------------------------	---

RNAV (GPS) RWY 36

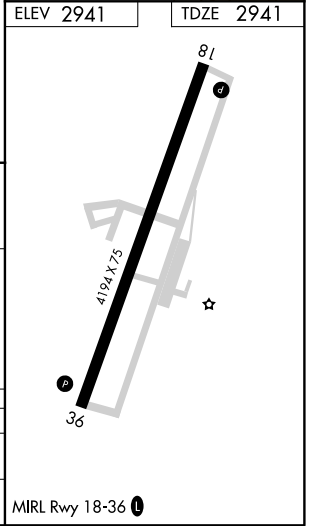
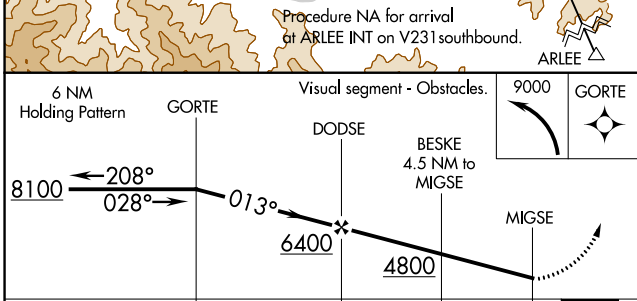
POLSON (8S1)

<p>NA -20°C</p>	<p>Procedure NA at night. DME/DME RNP-0.3 NA. Use Glacier Park Intl altimeter setting. Helicopter visibility reduction below 1 SM NA.</p>	<p>MISSED APPROACH: Climbing left turn to 9000 direct GORTE WP and hold.</p>
----------------------------	---	--

<p>GLACIER PARK INTL ASOS 132.625</p>	<p>SALT LAKE CENTER 133.4 285.4</p>	<p>UNICOM 122.8 (CTAF)</p>
--	--	---------------------------------------



ELEV 2941	TDZE 2941
-----------	-----------



CATEGORY	A	B	C	D
LNAV	4340-1¼ 1399 (1400-1¼)	4340-1½ 1399 (1400-1½)		NA
CIRCLING	4340-1¼ 1399 (1400-1¼)	4340-1½ 1399 (1400-1½)		NA

NW-1, 21 JUN 2018 to 19 JUL 2018

NW-1, 21 JUN 2018 to 19 JUL 2018