

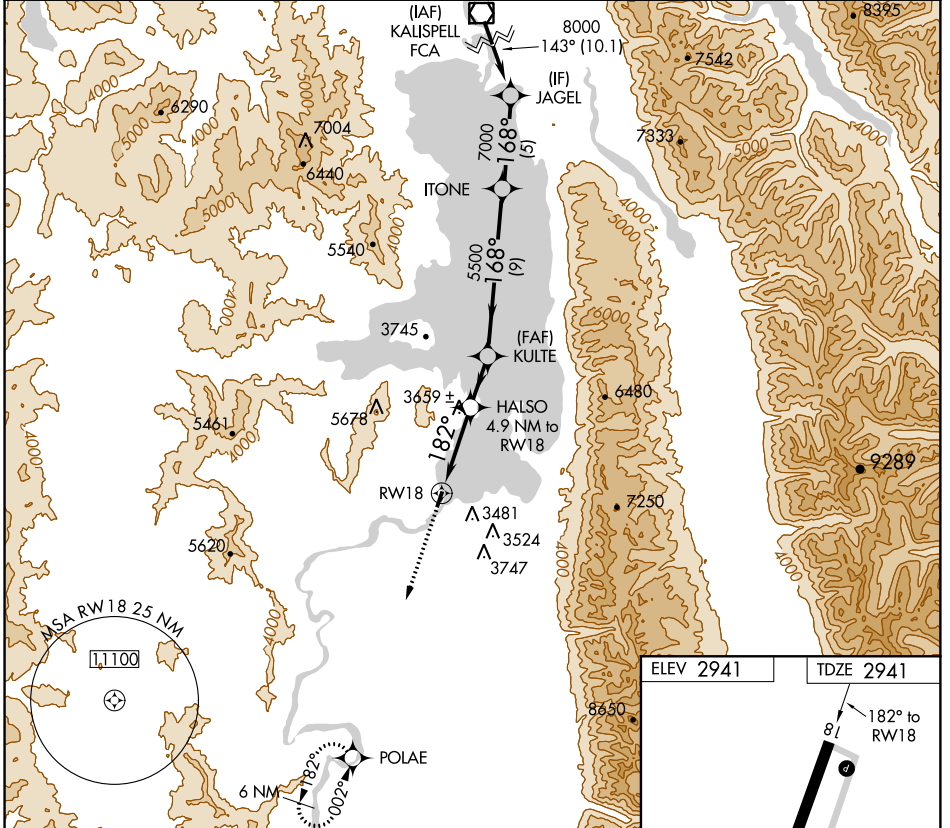
APP CRS	Rwy Idg	<b>4195</b>
<b>182°</b>	TDZE	<b>2941</b>
	Apt Elev	<b>2941</b>

# RNAV (GPS) RWY 18

POLSON (8S1)

<p>Procedure NA at night. DME/DME RNP-0.3 NA. Use Glacier Park Intl altimeter setting. Helicopter visibility reduction below 1 SM NA.</p>	<p>MISSED APPROACH: Climb to 9200 direct POLAE and hold.</p>
---	--

GLACIER PARK INTL ASOS <b>132.625</b>	SALT LAKE CENTER <b>133.4 285.4</b>	UNICOM <b>122.8 (CTAF) 0</b>
--	--	---------------------------------



NW-1, 16 AUG 2018 to 13 SEP 2018

NW-1, 16 AUG 2018 to 13 SEP 2018

9200	POLAE	HALSO 4.9 NM to RWY 18	KULTE	ITONE	JAGEL	FCA VOR/DME
		≤ 3.09° TCH 30				8000
		182°	168°	143°		Procedure Turn NA
		4560	5500	7000	8000	
		4.9 NM	2.9 NM	9 NM	5 NM	10.1 NM
CATEGORY	A	B	C	D		
LNAV MDA	4480-1¼ 1539 (1600-1¼)	4480-1½ 1539 (1600-1½)		NA		
CIRCLING	4480-1¼ 1539 (1600-1¼)	4480-1½ 1539 (1600-1½)		NA		

