

APP CRS <b>228°</b>	Rwy Idg <b>4300</b>
	TDZE <b>2864</b>
	Apt Elev <b>2869</b>

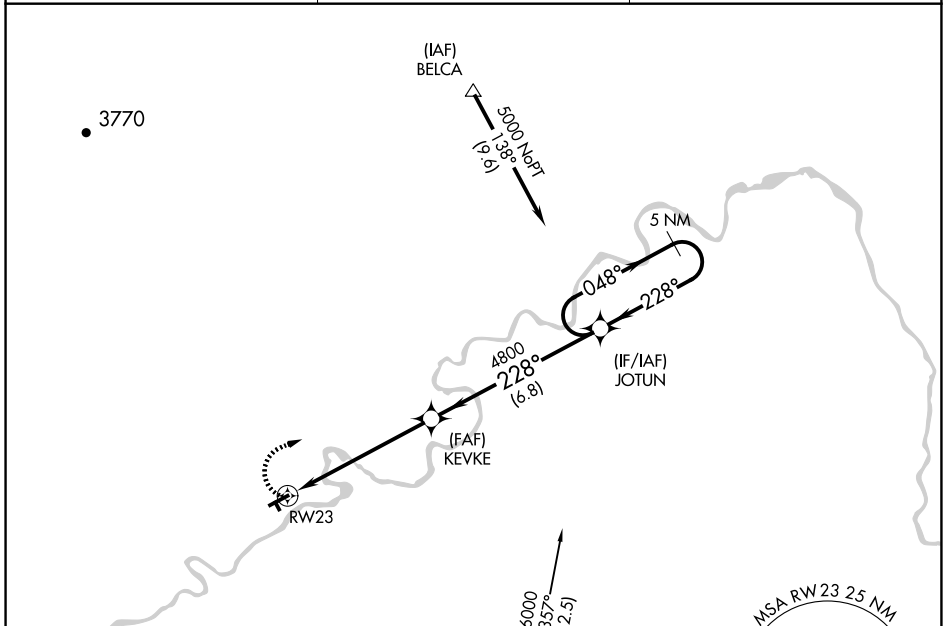
# RNAV (GPS) RWY 23

FORT BENTON (79S)

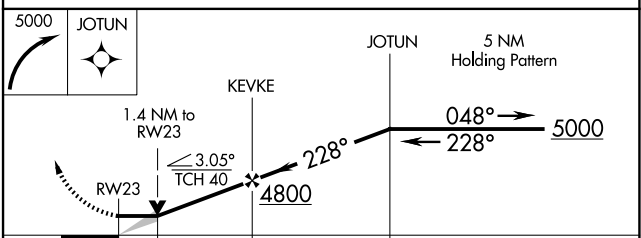
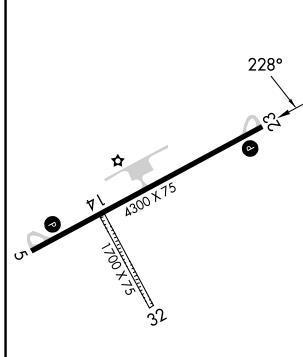
**⚠** DME/DME RNP-0.3 NA. Procedure NA at night. When local altimeter setting not received, use Great Falls altimeter setting and increase all MDAs 200 feet and LNAV visibility Cat C ½ SM, and Circling visibility Cat C ¾ SM. Circling NA to Rwys 14-32.

**MISSED APPROACH:** Climbing right turn to 5000 direct JOTUN and hold.

AWOS-3PT <b>121.125</b>	SALT LAKE CENTER <b>133.4 285.4</b>	UNICOM <b>122.8 (CTAF)</b> <b>📶</b>
----------------------------	--	--



ELEV 2869	TDZE 2864
-----------	-----------



CATEGORY	A	B	C	D
LNAV MDA	3340-1	476 (500-1)	3340-1¼ 476 (500-1¼)	NA
CIRCLING	3340-1	471 (500-1)	3460-1½ 591 (600-1½)	NA

NW-1, 15 MAY 2025 to 12 JUN 2025

NW-1, 15 MAY 2025 to 12 JUN 2025