

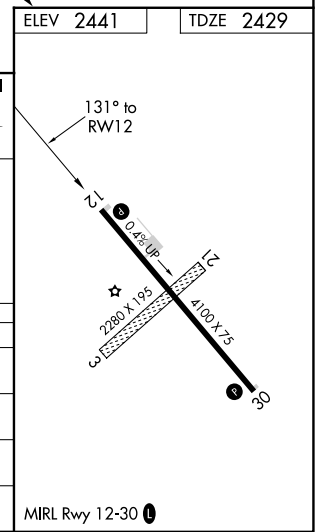
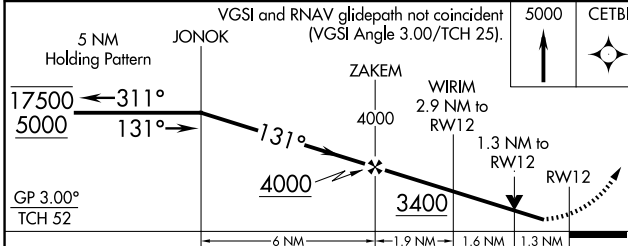
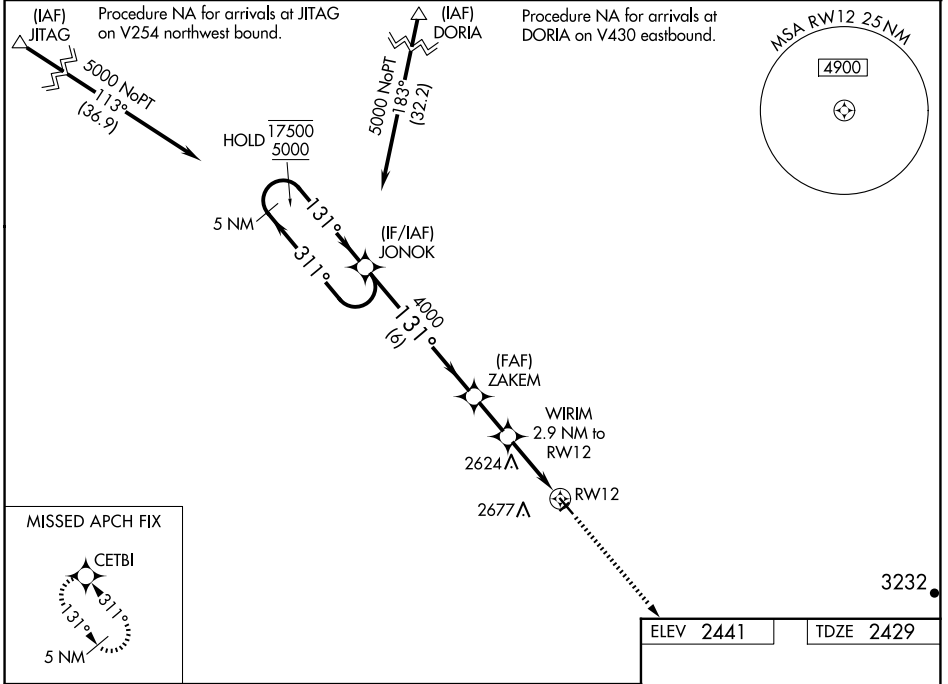
WAAS CH 86930 W12A	APP CRS 131°	Rwy Idg TDZE Apt Elev	4100 2429 2441
--	------------------------	-----------------------------	---

RNAV (GPS) RWY 12

CIRCLE TOWN COUNTY (4U6)

RNP APCH-GPS.	<p>▼ Rwy 12 helicopter visibility reduction below $\frac{3}{4}$ SM NA. For uncompensated Baro-VNAV systems, LNAV/VNAV NA below -19°C or above 54°C. Circling NA to Rwy 3 and 21.</p>	MISSED APPROACH: Climb to 5000 direct CETBI and hold.
---------------	--	---

AWOS-2 119.025	SALT LAKE CENTER 126.85 305.2	UNICOM 122.8 (CTAF) 0
--------------------------	---	---------------------------------



CATEGORY	A	B	C	D
LPV DA	2679-1		250 (300-1)	
LNAV/VNAV DA	2850-1 $\frac{1}{4}$		421 (500-1 $\frac{1}{4}$)	
LNAV MDA	2880-1 451 (500-1)		2880-1 $\frac{3}{8}$ 451 (500-1 $\frac{3}{8}$)	
C CIRCLING	2940-1 499 (500-1)	3020-1 579 (600-1)	3060-1 $\frac{3}{8}$ 619 (700-1 $\frac{3}{8}$)	3320-2 $\frac{3}{4}$ 879 (900-2 $\frac{3}{4}$)

NW-1, 15 MAY 2025 to 12 JUN 2025

NW-1, 15 MAY 2025 to 12 JUN 2025