

WAAS CH <b>45824</b> <b>W25A</b>	APP CRS <b>246°</b>	Rwy Idg TDZE <b>544</b> Apt Elev <b>544</b>	<b>3375</b> <b>544</b> <b>544</b>
--	------------------------	---	---

# RNAV (GPS) RWY 25

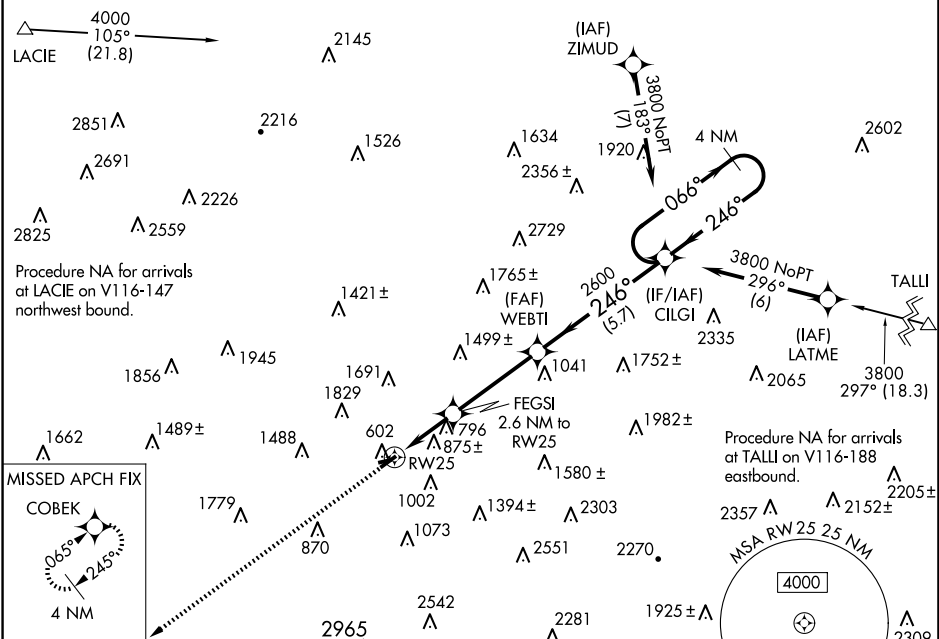
WILKES-BARRE WYOMING VALLEY (WBW)

RNP APCH - GPS.

**NA** Circling NA to Rwy 9 and 27. Rwy 25 helicopter visibility reduction below 3/4 SM NA.  
Baro-VNAV NA. Use AVP altimeter setting. Circling NA NW of Rwy 7-25.

**MISSED APPROACH:**  
Climb to 3700 direct COBEK and hold.

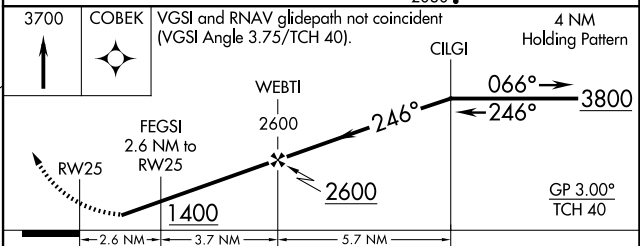
AVP ASOS <b>135.75</b>	WILKES-BARRE APP CON <b>126.3 256.7</b>	UNICOM <b>122.8 (CTAF)</b>
---------------------------	--	-------------------------------



NE-4, 15 MAY 2025 to 12 JUN 2025

NE-4, 15 MAY 2025 to 12 JUN 2025

ELEV <b>544</b>	TDZE <b>544</b>
-----------------	-----------------



CATEGORY	A	B	C	D
LPV DA		NA		
LNAV/VNAV DA	NA			
LNAV MDA	1240-1	696 (700-1)		NA
CIRCLING	1320-1 776 (800-1)	1380-1 1/4 836 (900-1 1/4)	NA	