

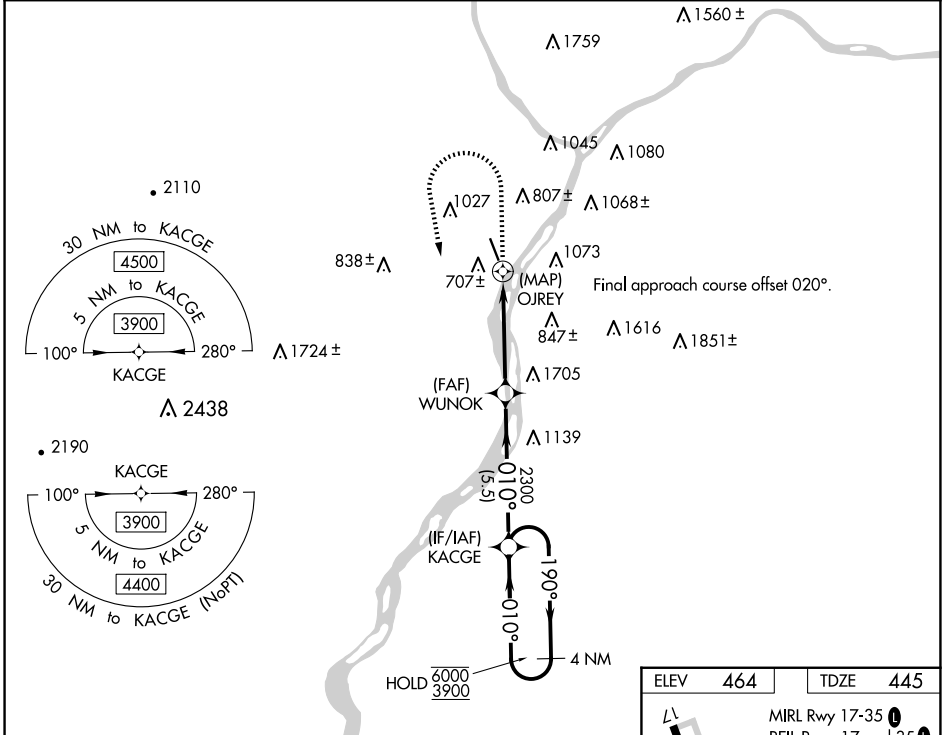
WAAS CH <b>49139</b> W35A	APP CRS <b>010°</b>	Rwy Idg TDZE Apt Elev	<b>4510</b> <b>445</b> <b>464</b>
---------------------------------	------------------------	-----------------------------	---

# RNAV (GPS) RWY 35

PENN VALLEY (SE/G)

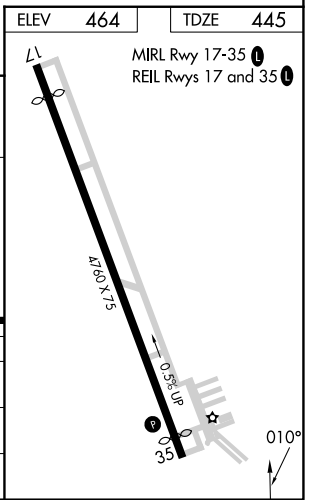
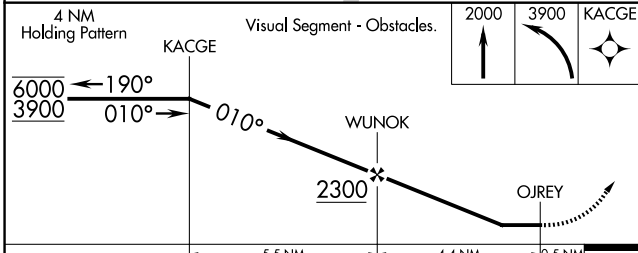
RNP APCH - GPS.		MISSED APPROACH: Climb to 2000 then climbing left turn to 3900 direct KACGE and hold.
Rwy 35 helicopter visibility reduction below 1 SM NA. Circling Rwy 17 NA at night. Straight-in Rwy 35 at night, operational VGSI required, remain on or above VGSI glidepath until threshold.		
-15°C		

ASOS <b>123.975</b>	HARRISBURG APP CON <b>118.25 269.45</b>	UNICOM <b>122.7 (CTAF) 0</b>
------------------------	--	---------------------------------



NE-4, 15 MAY 2025 to 12 JUN 2025

NE-4, 15 MAY 2025 to 12 JUN 2025



CATEGORY	A	B	C	D
LP MDA	1200-1 755 (800-1)	1200-1½ 755 (800-1½)	1200-2	755 (800-2)
LNAV MDA	1860-1½ 1415 (1400-1½)	1860-1½ 1415 (1400-1½)	1860-3	1415 (1400-3)
<b>C</b> CIRCLING	1860-1½ 1396 (1400-1½)	1860-1½ 1396 (1400-1½)	1860-3	1396 (1400-3)