


| | | |
|--|------------------------|---|
| WAAS CH 97412 W36A | APP CRS 004° | Rwy Idg 5151 TDZE 343 Apt Elev 344 |
|--|------------------------|---|

RNAV (GPS) RWY 36

READING RGNL/CARL A SPAATZ FLD (RDG)

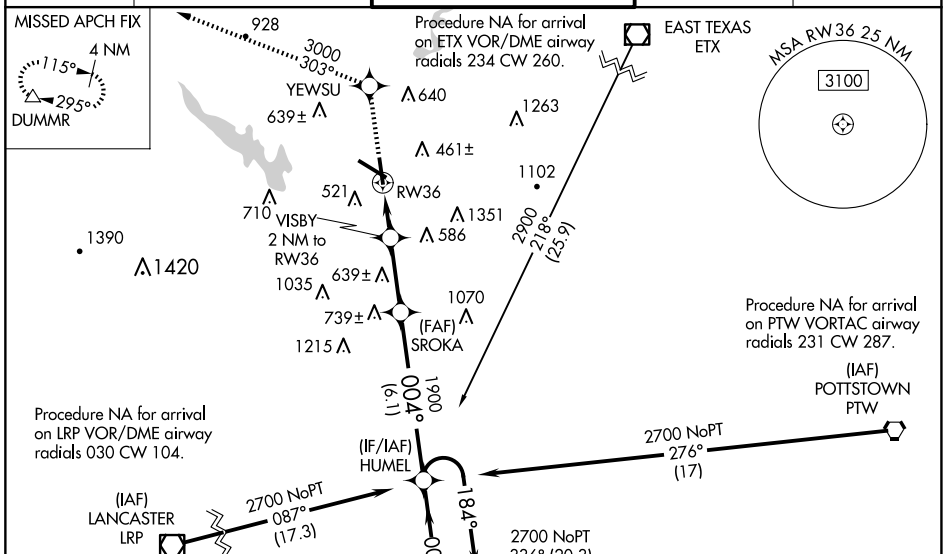
⚠ Night landing: Rwy 18, 31 NA. Inoperative table does not apply. Baro-VNAV NA when using Harrisburg Intl altimeter setting. For uncompensated Baro-VNAV systems, LNAV/VNAV NA below -15°C (5°F) or above 48°C (118°F). DME/DME RNP-0.3 NA. When local altimeter setting not received, use Harrisburg Intl altimeter setting and increase LPV DA to 715 feet and visibility ¼ SM, increase LNAV/VNAV DA to 928 feet and visibility ¼ SM and increase all MDAs 100 feet, and LNAV Cats C and D and Circling Cats B and C visibility ¼ SM.

MALSIF

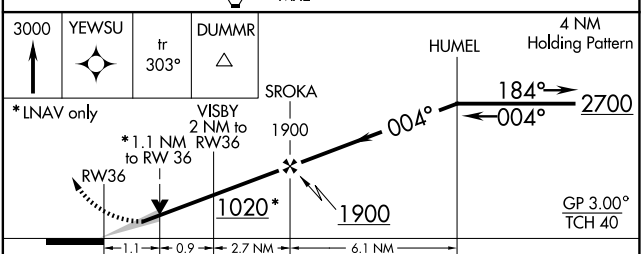
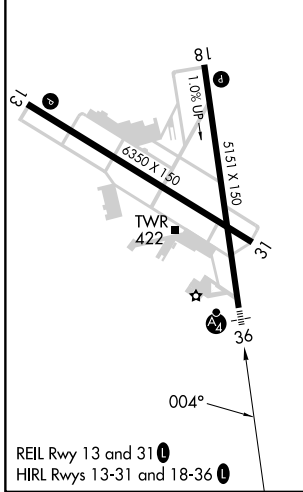


MISSED APPROACH:
Climb to 3000 direct YEWVSU and via 303° to DUMMR and hold, continue climb-in-hold to 3000.

| | | | | |
|----------------------|---|--|-------------------------|-------------------------|
| ATIS 127.1 | HARRISBURG APP CON 125.15 257.9 | READING TOWER ★ 119.9 (CTAF) 0 288.3 | GND CON 121.9 | UNICOM 122.95 |
|----------------------|---|--|-------------------------|-------------------------|



| | | |
|----------|----------|----------|
| ELEV 344 | D | TDZE 343 |
|----------|----------|----------|



| CATEGORY | A | B | C | D |
|--------------|---------------------|--------------------|-----------------------|----------------------|
| LPV DA | 622-1 279 (300-1) | | | |
| LNAV/VNAV DA | 835-1¾ 492 (500-1¾) | | | |
| LNAV MDA | 740-1 397 (400-1) | | | 740-1½ 397 (400-1½) |
| CIRCLING | 1020-1 676 (700-1) | 1080-1 736 (800-1) | 1280-2¾ 936 (1000-2¾) | 1660-3 1316 (1400-3) |

NE-4, 15 MAY 2025 to 12 JUN 2025

NE-4, 15 MAY 2025 to 12 JUN 2025