

| | | | |
|--------------|-------------|----------|-------------|
| LOC I-RDG | APP CRS | Rwy Idg | 5151 |
| 109.5 | 004° | TDZE | 343 |
| | | Apt Elev | 344 |

ILS or LOC RWY 36

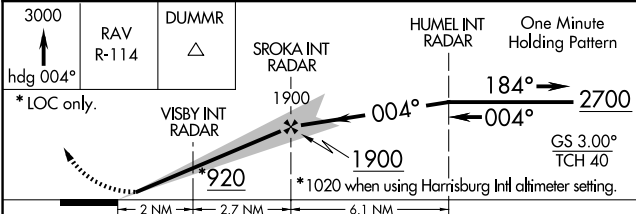
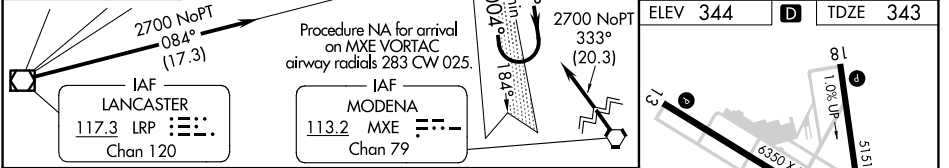
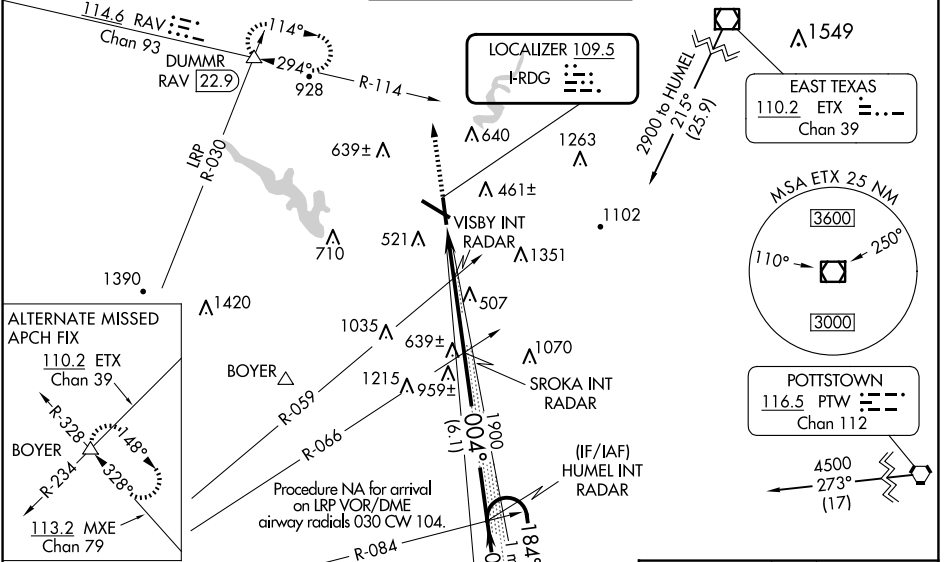
READING RGNL/CARL A SPAATZ FLD (RDG)

⚠ Night Landing: Rwy 18, 31 NA. Inoperative table does not apply. When local altimeter setting not received, use Harrisburg Intl altimeter setting and increase S-ILS 36 DA to 686 feet and all Cats visibility 1/4 SM, and increase all MDAs 100 feet, and S-LOC 36 Cats C and D and Circling Cats B and C visibility 1/4 SM.

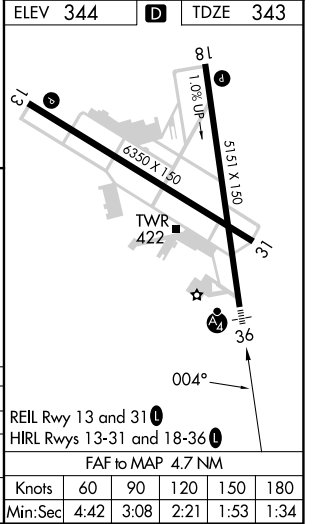
MAISF

MISSED APPROACH: Climb to 3000 on heading 004° and RAV VORTAC R-114 to DUMMR INT/RAV 22.9 DME and hold, continue climb-in-hold to 3000.

| | | | | |
|----------------------|---|--|-------------------------|-------------------------|
| ATIS 127.1 | HARRISBURG APP CON 125.15 257.9 | READING TOWER ★ 119.9 (CTAF) 288.3 | GND CON 121.9 | UNICOM 122.95 |
|----------------------|---|--|-------------------------|-------------------------|



| | | | | |
|----------|-----------------------|-----------------------|--------------------------|-------------------------|
| CATEGORY | A | B | C | D |
| S-ILS 36 | | 593-1 | 250 (300-1) | |
| S-LOC 36 | 820-1 | 477 (500-1) | 820-1½ 477 (500-1½) | 820-1½ 477 (500-1½) |
| CIRCLING | 1020-1 676 (700-1) | 1080-1 736 (800-1) | 1280-2¾ 936 (1000-2¾) | 1660-3 1316 (1400-3) |



NE-4, 15 MAY 2025 to 12 JUN 2025