

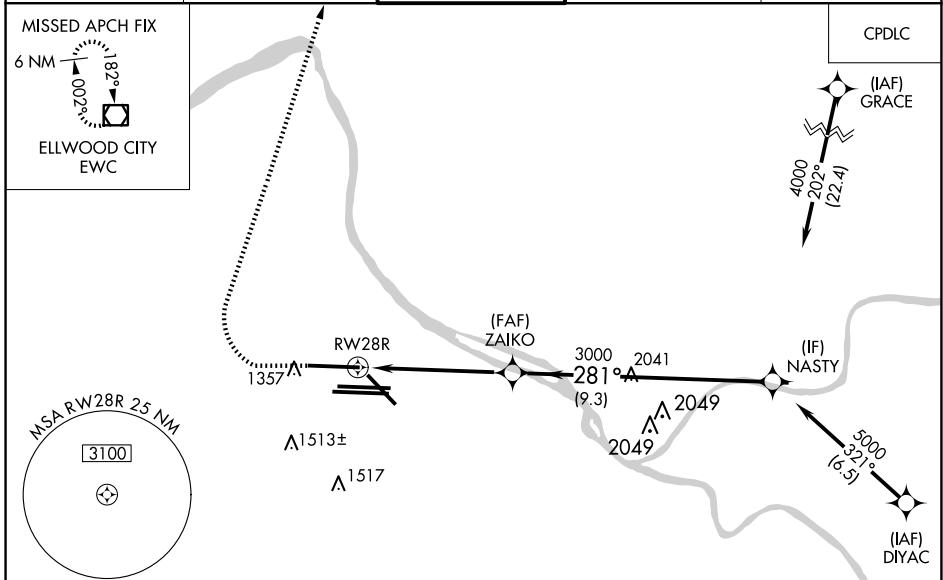
WAAS CH <b>40027</b> <b>W28D</b>	APP CRS <b>281°</b>	Rwy Idg TDZE Apt Elev	<b>10102</b> <b>1174</b> <b>1203</b>
--	------------------------	-----------------------------	--

# RNAV (GPS) Y RWY 28R

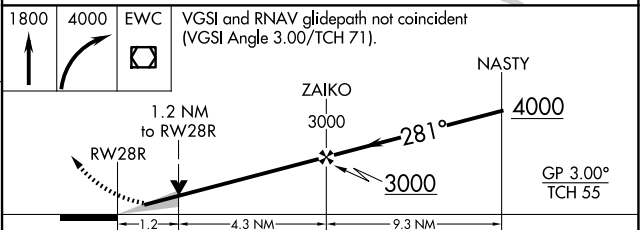
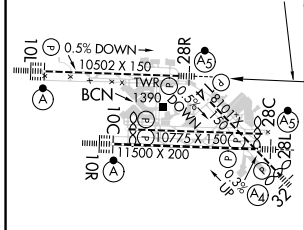
PITTSBURGH INTL (PIT)

RNP APCH - GPS.	MALSR 	MISSED APPROACH: Climb to 1800 then climbing right turn to 4000 direct EWC VOR/DME and hold.
<p><b>⚠</b> Circling Rwy 14 NA at night. Simultaneous approach authorized. For uncompensated Baro-VNAV systems, LNAV/VNAV NA below -18°C or above 54°C. For inop ALS, increase LNAV Cats C/D visibility to 1 1/2 SM. LNAV procedure NA during simultaneous operations. Use of FD or AP required during simultaneous operations.</p>		

D-ATIS ARR <b>127.25</b> DEP <b>135.9</b>	PITTSBURGH APP CON <b>123.95 360.8</b>	PITTSBURGH TOWER <b>128.3 291.7</b>	GND CON SOUTH <b>121.9 348.6</b> NORTH <b>127.8 348.6</b>	CLNC DEL <b>126.75 353.7</b>
---	---	--	---	---------------------------------



ELEV 1203	<b>D</b>	TDZE 1174
-----------	----------	-----------



CATEGORY	A	B	C	D
LPV DA	1374/18 200 (200-1/2)			
LNAV/VNAV DA	1629/45 455 (500-7%)			
LNAV MDA	1640/24 466 (500-1/2)	1640/50 466 (500-1)		
<b>C</b> CIRCLING	1700-1 497 (500-1)	1880-2 677 (700-2)	1880-2 1/4 677 (700-2 1/4)	

REIL Rwy 10C  
HIRL all Rwys  
TDZ/CL Rwys 10L, 10R, 28L, 28R, 28C, and 32