

WAAS CH <b>48911</b> <b>W13A</b>	APP CRS <b>128°</b>	Rwy Idg TDZE Apt Elev	<b>4500</b> <b>1885</b> <b>1915</b>
--	------------------------	-----------------------------	---

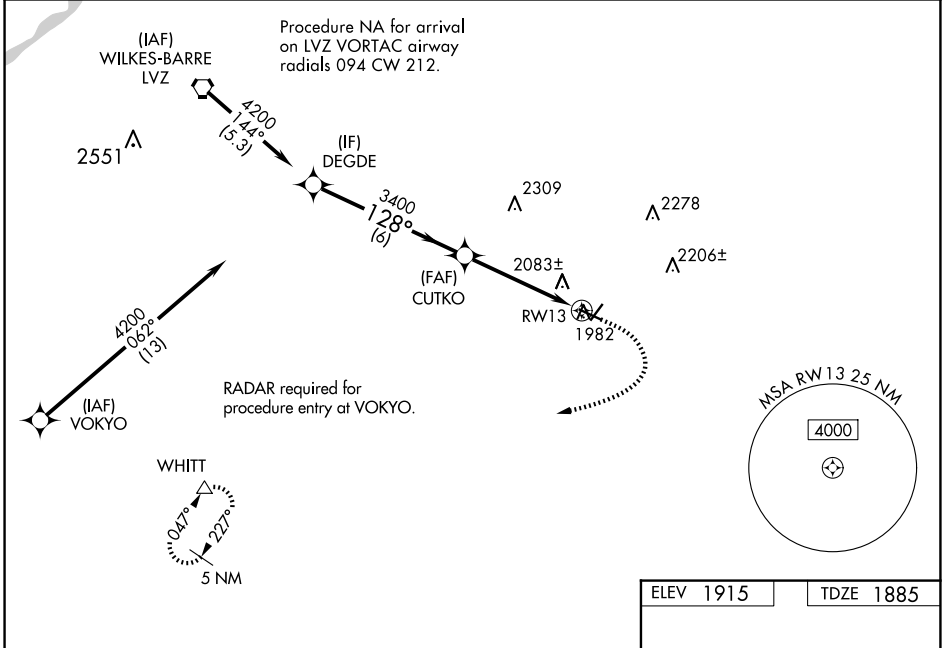
# RNAV (GPS) RWY 13

POCONO MOUNTAINS RGNL (MPO)

**▼** For uncompensated Baro-VNAV systems, LNAV/VNAV NA below -18° C (0° F) or above 54° C (130° F).  
**▲** Baro-VNAV and VDP NA when using Wilkes-Barre/Scranton altimeter setting. Rwy 13 helicopter visibility reduction below 3/4 SM NA. DME/DME RNP-0.3 NA. When local altimeter setting not received, use Wilkes-Barre/Scranton altimeter setting: increase LPV DA to 2450 feet, LNAV/VNAV DA to 2537 feet and all visibilities 1/2 SM; increase all MDAs 180 feet and visibility LNAV Cat C/D 3/8 SM and Circling Cat C/D 1/2 SM. Circling Rwy 23 NA at night.

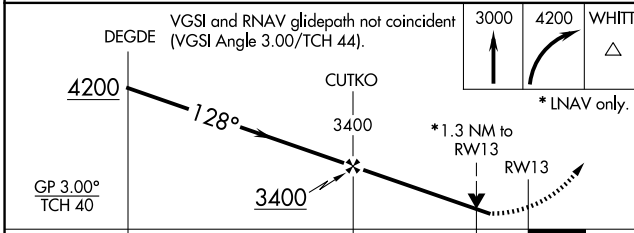
**MISSED APPROACH:**  
 Climb to 3000 then climbing right turn to 4200 direct WHITT and hold.

ASOS <b>120.275</b>	WILKES-BARRE APP CON <b>126.3 256.7</b>	CLNC DEL <b>125.3</b>	UNICOM <b>122.7 (CTAF) 0</b>
------------------------	--	--------------------------	---------------------------------



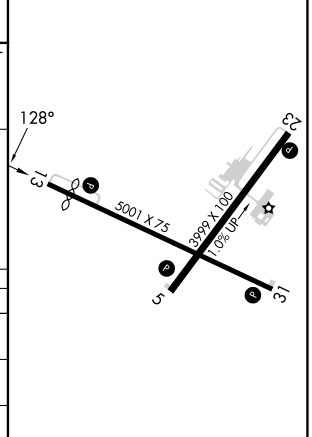
NE-4, 15 MAY 2025 to 12 JUN 2025

NE-4, 15 MAY 2025 to 12 JUN 2025



ELEV 1915	TDZE 1885
-----------	-----------

CATEGORY	A	B	C	D
LPV DA		2271-1 1/4	386 (400-1 1/4)	
LNAV/VNAV DA		2358-1 1/2	473 (500-1 1/2)	
LNAV MDA	2340-1	455 (500-1)	2340-1 3/8	455 (500-1 3/8)
<b>C</b> CIRCLING	2420-1 505 (600-1)	2500-1 585 (600-1)	2600-2 685 (700-2)	2660-2 1/2 745 (800-2 1/2)



REIL Rwy 5, 13, 23, and 31 **0**  
 MIRL Rwy 5-23 and 13-31 **0**