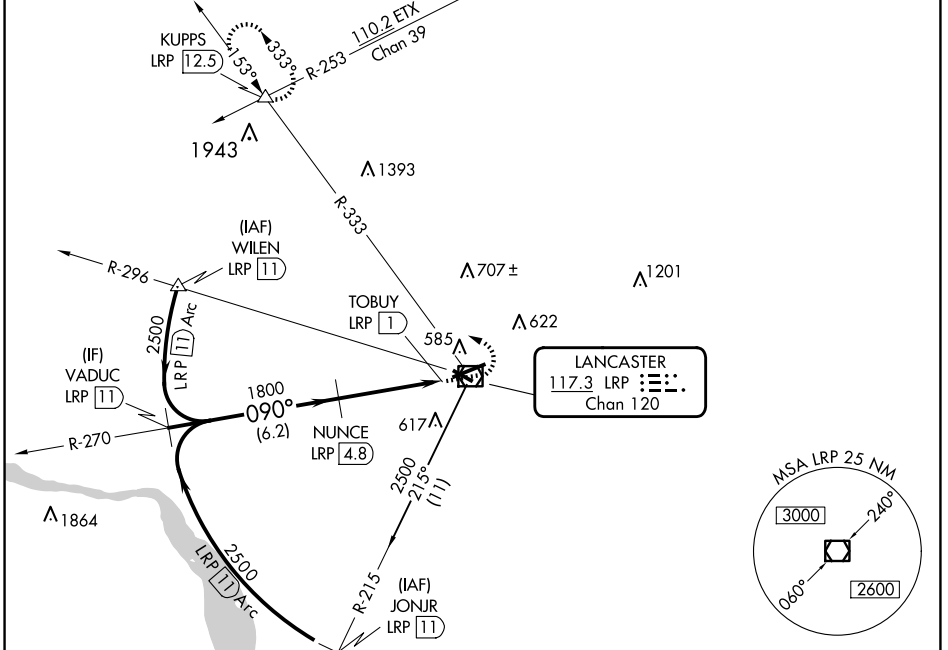


VOR/DME LRP <b>117.3</b> Chan <b>120</b>	APP CRS <b>090°</b>	Rwy Ldg <b>6118</b> TDZE <b>399</b> Apt Elev <b>403</b>
--	------------------------	---

# VOR/DME RWY 8

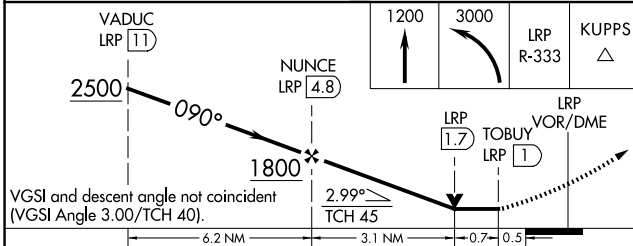
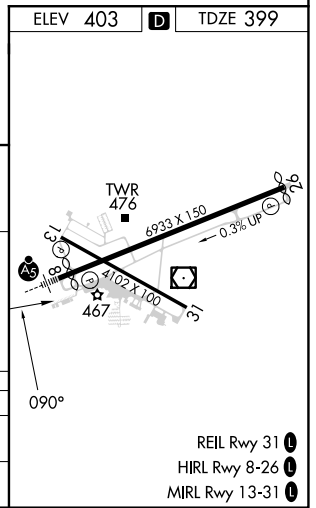
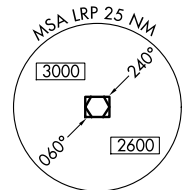
LANCASTER (LNS)

<p><b>⚠</b> Circling Rwy 13, 31 NA at night. Inop table does not apply. When local altimeter setting not received, use Harrisburg Intl altimeter setting and increase all MDA 80 feet, and S-8 and Circling Cats C and D visibility ¼ mile.</p>	<p>MALSR</p>	<p>MISSED APPROACH: Climb to 1200 then climbing left turn to 3000 via LRP VOR/DME R-333 to KUPPS INT/LRP 12.5 DME and hold.</p>		
<p>ATIS <b>125.675</b></p>	<p>HARRISBURG APP CON <b>126.45 281.525</b></p>	<p>LANCASTER TOWER★ <b>120.9</b> (CTAF) <b>251.1</b></p>	<p>GND CON <b>121.8</b></p>	<p>UNICOM <b>122.95</b></p>



NE-4, 15 MAY 2025 to 12 JUN 2025

NE-4, 15 MAY 2025 to 12 JUN 2025



CATEGORY	A	B	C	D
S-8	820-1	421 (500-1)	820-1¼	421 (500-1¼)
CIRCLING	940-1	537 (600-1)	960-1½ 557 (600-1½)	1060-2 657 (700-2)