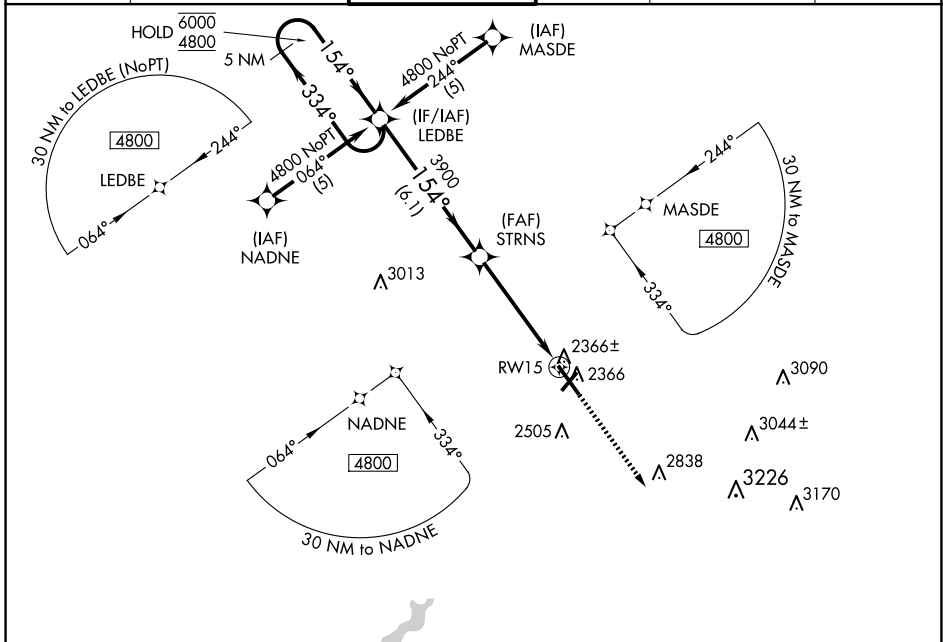


WAAS CH <b>53513</b> <b>W15A</b>	APP CRS <b>154°</b>	Rwy Idg TDZE Apt Elev	<b>6698</b> <b>2276</b> <b>2284</b>
----------------------------------------	------------------------	-----------------------------	-------------------------------------------

# RNAV (GPS) RWY 15

JOHN MURTHA JOHNSTOWN/CAMBRIA COUNTY (JST)

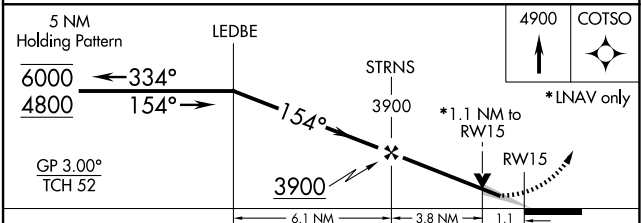
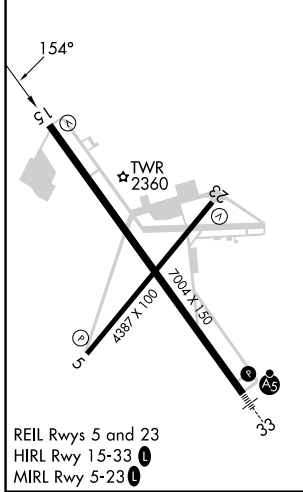
RNP APCH - GPS.		MISSED APPROACH: Climb to 4900 direct COTSO and hold.			
Baro-VNAV NA.					
ATIS <b>118.325</b>	JOHNSTOWN APP CON ★ <b>121.2 299.2</b>	JOHNSTOWN TOWER ★ <b>125.75 (CTAF)</b>	GND CON <b>121.6</b>	CLNC DEL <b>126.85 235.775</b>	UNICOM <b>122.95</b>



NE-4, 15 MAY 2025 to 12 JUN 2025

NE-4, 15 MAY 2025 to 12 JUN 2025

ELEV 2284	<b>D</b>	TDZE 2276
-----------	----------	-----------



CATEGORY	A	B	C	D
LPV DA		2526-¾	250 (300-¾)	
LNAV/VNAV DA		2595-1	319 (400-1)	
LNAV MDA	2680-1	404 (400-1)	2680-1½ 404 (400-1½)	2680-1¼ 404 (400-1¼)
<b>C</b> CIRCLING	2700-1 416 (500-1)	2880-1 596 (600-1)	2880-1½ 596 (600-1½)	3000-2¼ 716 (800-2¼)