

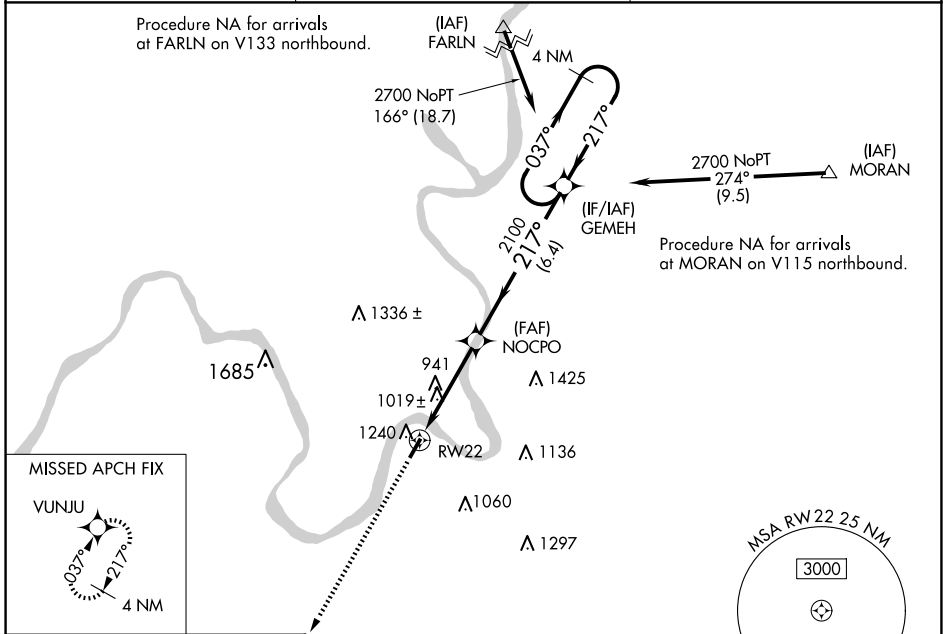
WAAS CH <b>61323</b> <b>W22A</b>	APP CRS <b>217°</b>	Rwy Idg TDZE <b>4000</b> <b>758</b> Apt Elev <b>758</b>
--	------------------------	--

# RNAV (GPS) RWY 22

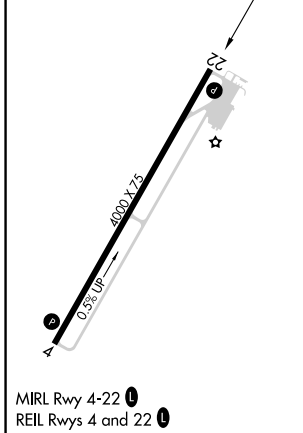
JACKSON COUNTY (I18)

RNP APCH.	When local altimeter setting not received, use Point Pleasant altimeter setting and increase all MDA 60 feet; increase LP and LNAV Cat C visibility ¼ mile. Circling Rwy 4 NA at night. Rwy 22 helicopter visibility reduction below ¾ SM NA.	MISSED APPROACH: Climb to 2600 direct VUNJU and hold.
-----------	---	--

AWOS-2 <b>121.3</b>	HUNTINGTON APP CON <b>128.4 270.1</b>	UNICOM <b>122.8 (CTAF) 0</b>
------------------------	--	---------------------------------



ELEV 758	TDZE 758
----------	----------



2600	VUNJU	VGSI and descent angles not coincident (VGSI Angle 4.00/TCH 50).		4 NM Holding Pattern
RW22		NOCPO		2700
CATEGORY	A	B	C	D
LP MDA	1280-1	522 (600-1)	1280-1½ 522 (600-1½)	NA
LNAV MDA	1540-1 782 (800-1)	1540-1¼ 782 (800-1¼)	1540-2½ 782 (800-2½)	NA
CIRCLING	1600-1¼	842 (900-1¼)	1600-2½ 842 (900-2½)	NA

NE-4, 15 MAY 2025 to 12 JUN 2025

NE-4, 15 MAY 2025 to 12 JUN 2025