

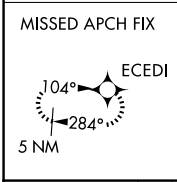
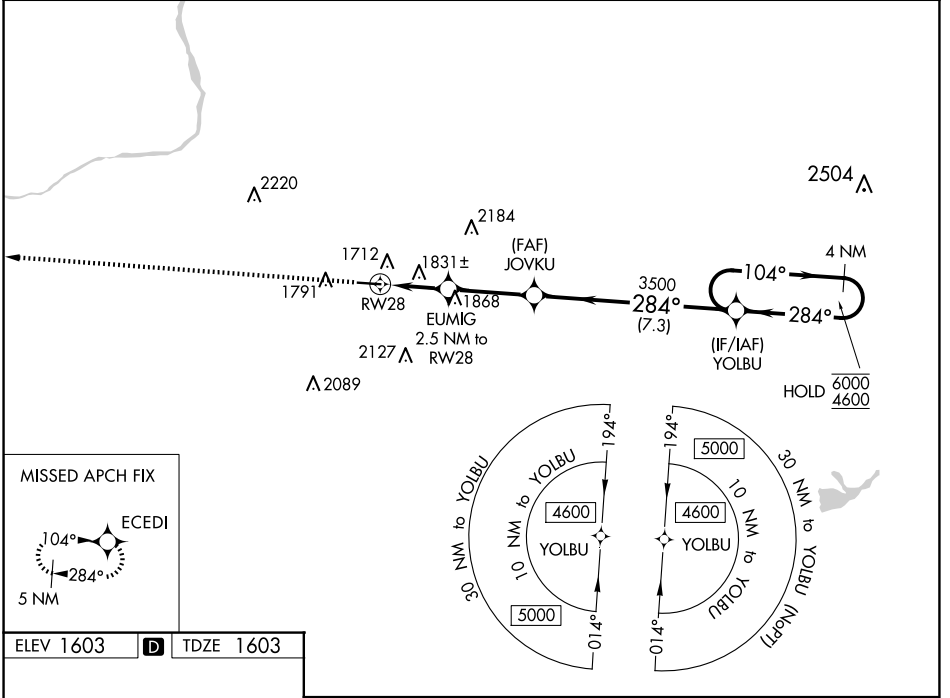
WAAS CH 50140 W28A	APP CRS 284°	Rwy Idg TDZE Apt Elev	4898 1603 1603
--	------------------------	-----------------------------	---

RNAV (GPS) RWY 28

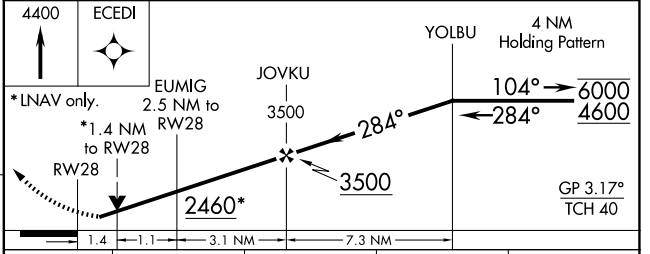
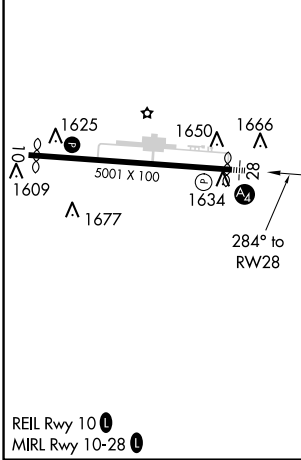
HAZLETON RGNL (HZL)

RNP APCH.	MALS =	MISSED APPROACH: Climb to 4400 direct ECEDI and hold.
<p>▼ Rwy 28 helicopter visibility reduction below 3/4 SM NA. Inop table does not apply to LPV all Cats and LNAV Cats A/B. For uncompensated Baro-VNAV systems, LNAV/VNAV NA below -18°C or above 54°C.</p>		

AWOS-3 119.975	WILKES-BARRE APP CON 126.3 256.7	CLNC DEL 121.7	UNICOM 123.0 (CTAF) 0
--------------------------	--	--------------------------	---------------------------------



ELEV 1603	D	TDZE 1603
-----------	----------	-----------



CATEGORY	A	B	C	D
LPV DA	1978-1		375 (400-1)	
LNAV/VNAV DA	2143-1¼		540 (600-1¼)	
LNAV MDA	2100-1	497 (500-1)	2100-1½	497 (500-1½)
C CIRCLING	2140-1 537 (600-1)	2400-1 797 (800-1)	2480-2½ 877 (900-2½)	2520-3 917 (1000-3)

NE-4, 15 MAY 2025 to 12 JUN 2025

NE-4, 15 MAY 2025 to 12 JUN 2025