

WAAS CH 86240 W10A	APP CRS 104°	Rwy Idg TDZE Apt Elev	4801 1603 1603
--	------------------------	-----------------------------	---

RNAV (GPS) RWY 10

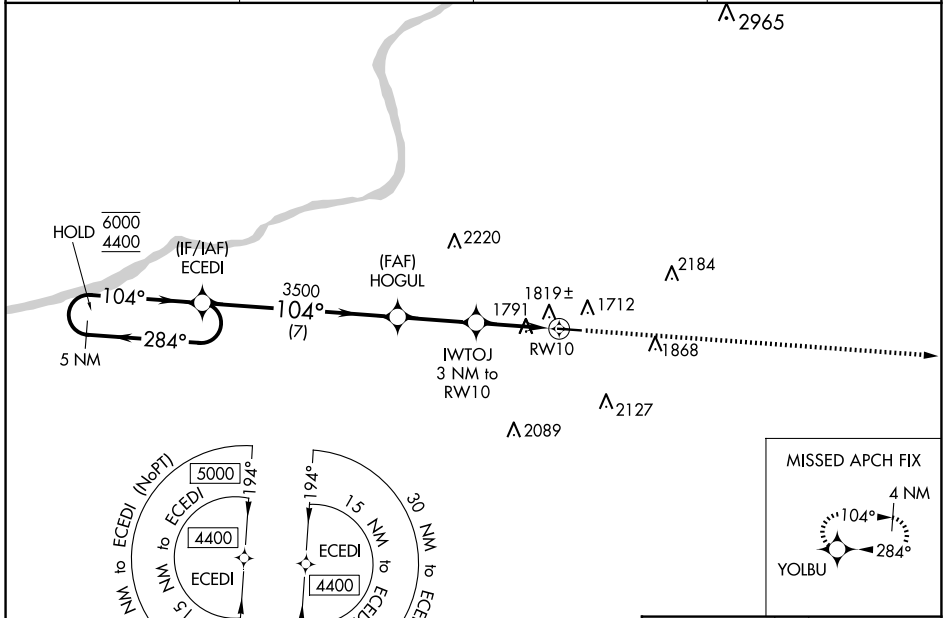
HAZLETON RGNL (HZL)

RNP APCH.

▽ **▲** Rwy 10 helicopter visibility reduction below 3/4 SM NA. For uncompensated Baro-VNAV systems, LNAV/VNAV NA below -18°C or above 54°C.

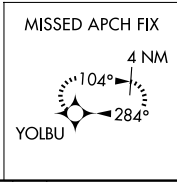
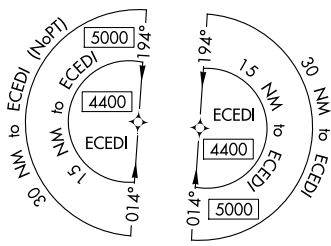
MISSED APPROACH:
Climb to 4600 direct YOLBU and hold.

AWOS-3 119.975	WILKES-BARRE APP CON 126.3 256.7	CLNC DEL 121.7	UNICOM 123.0 (CTAF) 0
--------------------------	--	--------------------------	---------------------------------

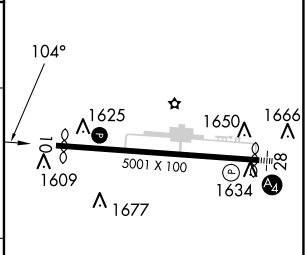
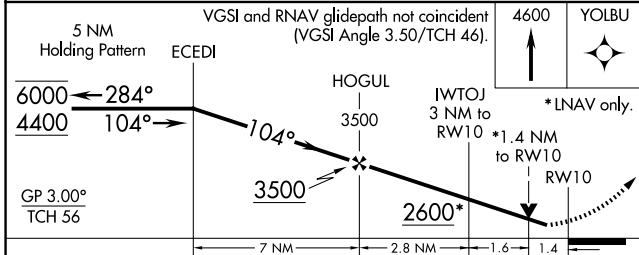


NE-4, 15 MAY 2025 to 12 JUN 2025

NE-4, 15 MAY 2025 to 12 JUN 2025



ELEV 1603	D TDZE 1603
-----------	--------------------



CATEGORY	A	B	C	D
LPV DA		2059-1 ³ / ₈	456 (500-1 ³ / ₈)	
LNAV/VNAV DA		2104-1 ³ / ₈	501 (600-1 ³ / ₈)	
LNAV MDA	2080-1	477 (500-1)	2080-1 ³ / ₈	477 (500-1 ³ / ₈)
C CIRCLING	2140-1 537 (600-1)	2400-1 797 (800-1)	2480-2 ¹ / ₂ 877 (900-2 ¹ / ₂)	2520-3 917 (1000-3)

REIL Rwy 10 0	MIRL Rwy 10-28 0
----------------------	-------------------------