

WAAS CH <b>72916</b> <b>W14A</b>	APP CRS <b>137°</b>	Rwy Idg TDZE Apt Elev	<b>5006</b> <b>1157</b> <b>1162</b>
--	------------------------	-----------------------------	---

# RNAV (GPS) RWY 14

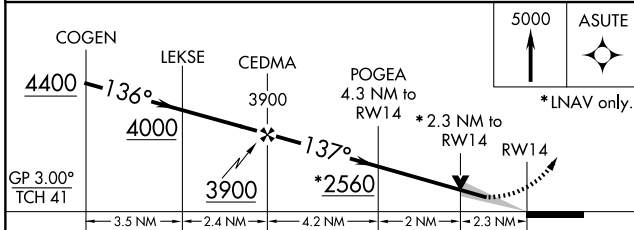
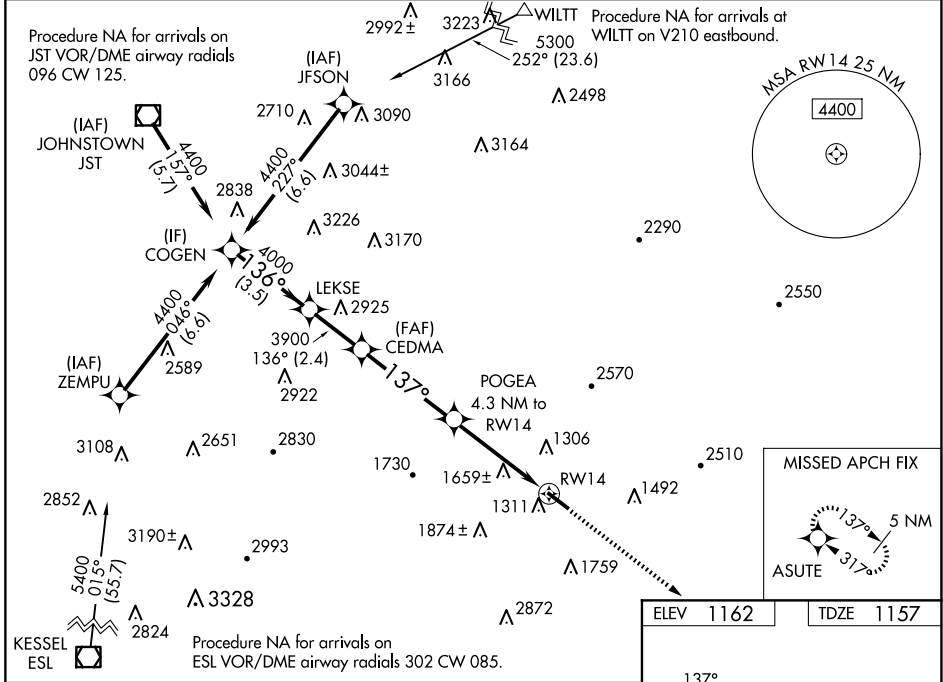
BEDFORD COUNTY (HMIZ)

RNP APCH.

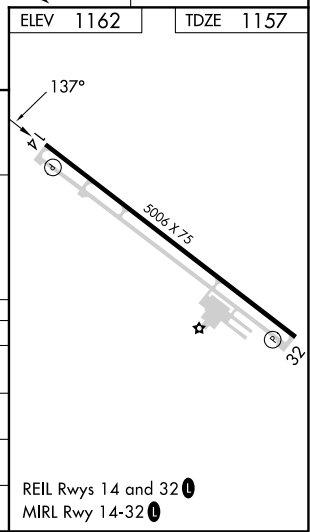
**⚠** For uncompensated Baro-VNAV systems, LNAV/VNAV NA below -17°C or above 54°C.

MISSED APPROACH: Climb to 5000 direct ASUTE and hold, continue climb-in-hold to 5000.

AWOS-3 <b>123.675</b>	JOHNSTOWN APP CON * <b>121.2 299.2</b>	UNICOM <b>122.7 (CTAF) 0</b>
--------------------------	---	---------------------------------



CATEGORY	A	B	C	D
LPV DA	1640-1½		483 (500-1½)	
LNAV/VNAV DA	2050-4		893 (900-4)	
LNAV MDA	1920-1 763 (800-1)	1920-1¼ 763 (800-1¼)	1920-2½	763 (800-2½)
CIRCLING	1920-1 758 (800-1)	1960-1¼ 798 (800-1¼)	2200-3 1038 (1100-3)	2940-3 1778 (1800-3)



NE-4, 15 MAY 2025 to 12 JUN 2025

NE-4, 15 MAY 2025 to 12 JUN 2025