

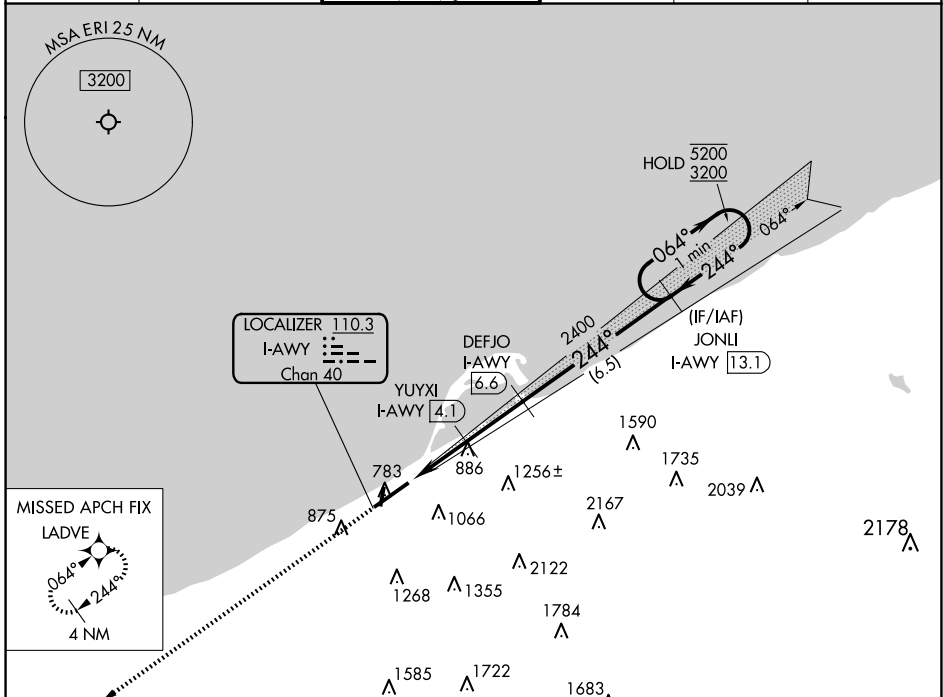
LOC/DME I-AWY <b>110.3</b> Chan <b>40</b>	APP CRS <b>244°</b>	Rwy Idg TDZE Apt Elev	<b>7500</b> <b>730</b> <b>732</b>
---	------------------------	-----------------------------	---

# ILS or LOC RWY 24

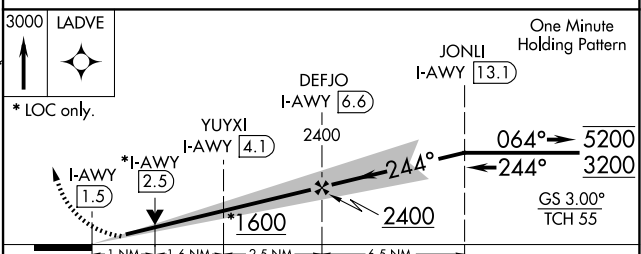
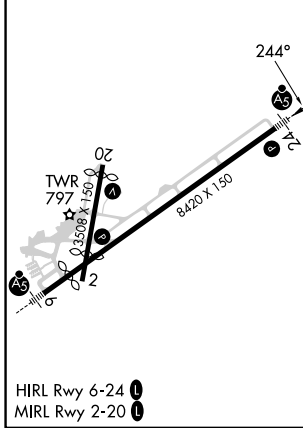
ERIE INTL/TOM RIDGE FLD (ERI)

RADAR required for procedure entry. RNAV 1-GPS and DME required.				MALSR	MISSED APPROACH: Climb to 3000 direct LADVE and hold (GPS required).
Circling Rwy 2, 20 NA at night. Circling NA southeast of Rwy 6-24.					

ATIS <b>120.35</b>	BUFFALO APP CON* <b>121.0 257.8</b>	ERIE TOWER* <b>118.1</b> (CTAF) <b>257.8</b>	GND CON <b>121.9</b>	CLNC DEL <b>126.8</b>	UNICOM <b>122.95</b>
-----------------------	--	---	-------------------------	--------------------------	-------------------------



ELEV 732	<b>D</b>	TDZE 730
----------	----------	----------



CATEGORY	A	B	C	D
S-ILS 24	942/24		212 (300-1/2)	
S-LOC 24	1120/24	390 (400-1/2)	1120/35	390 (400-3/4)
<b>C</b> CIRCLING	1160-1 428 (500-1)	1200-1 468 (500-1)	1200-1 1/2 468 (500-1 1/2)	1340-2 608 (700-2)

NE-4, 15 MAY 2025 to 12 JUN 2025

NE-4, 15 MAY 2025 to 12 JUN 2025