

APP CRS	Rwy Idg	4347
032°	TDZE	1972
	Apt Elev	1987

RNAV (GPS) RWY 5

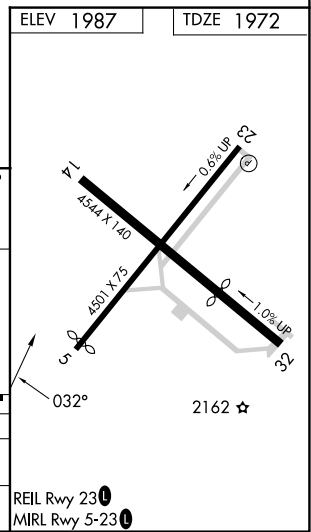
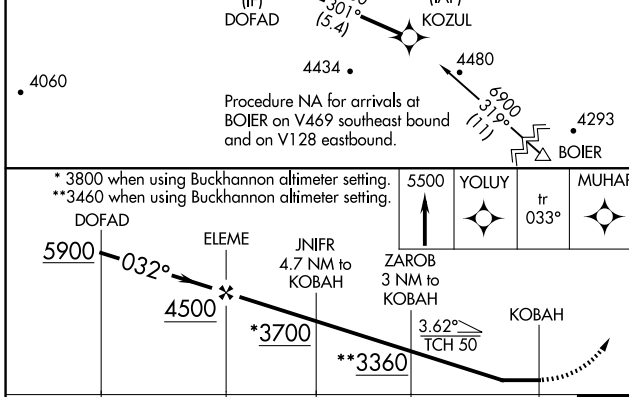
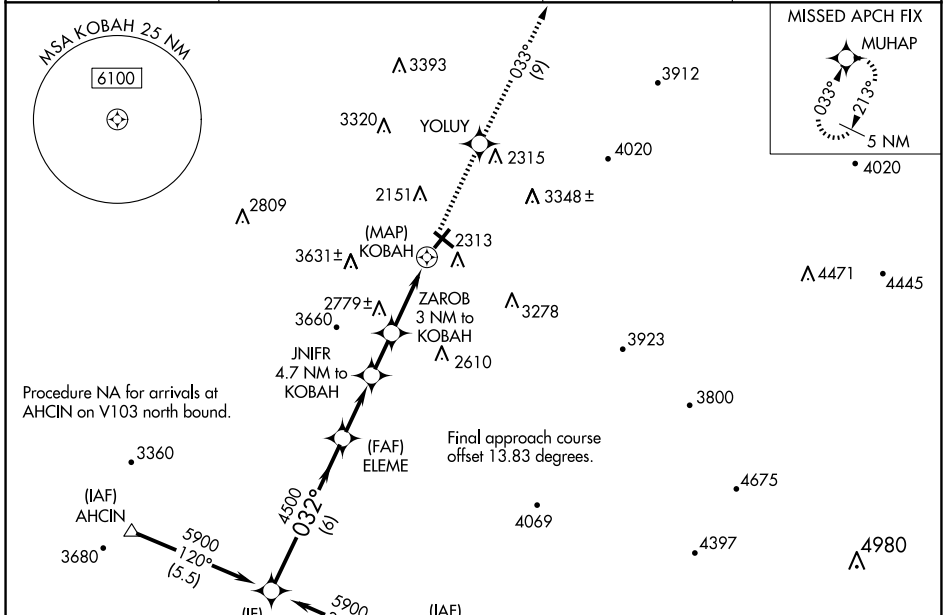
ELKINS/RANDOLPH COUNTY (JENNINGS RANDOLPH FLD) (EKN)

RNP APCH.

Circling Rwy 14, 23, 32 NA at night. When local altimeter setting not received, use Buckhannon altimeter setting and increase all MDA 100 feet.
 Straight-in minimums NA when using Buckhannon altimeter setting.
 Rwy 5 helicopter visibility reduction below 3/4 SM NA.

MISSED APPROACH: Climb to 5500 direct YOLUY and on track 033° to MUHAP and hold.

ASOS 119.275	CLARKSBURG APP CON ★ 121.15 284.65	CTAF 123.6	122.9 0
------------------------	--	----------------------	----------------



CATEGORY	A	B	C	D
LNVA MDA	3040-1½ 1068 (1100-1¼)	3040-1½ 1068 (1100-1½)	3040-3 1068 (1100-3)	NA
CIRCLING	3040-1¼ 1053 (1100-1¼)	3140-1½ 1153 (1200-1½)	3720-3 1733 (1800-3)	4020-3 2033 (2100-3)

RNAV (GPS) RWY 5

NE-4, 15 MAY 2025 to 12 JUN 2025

NE-4, 15 MAY 2025 to 12 JUN 2025