

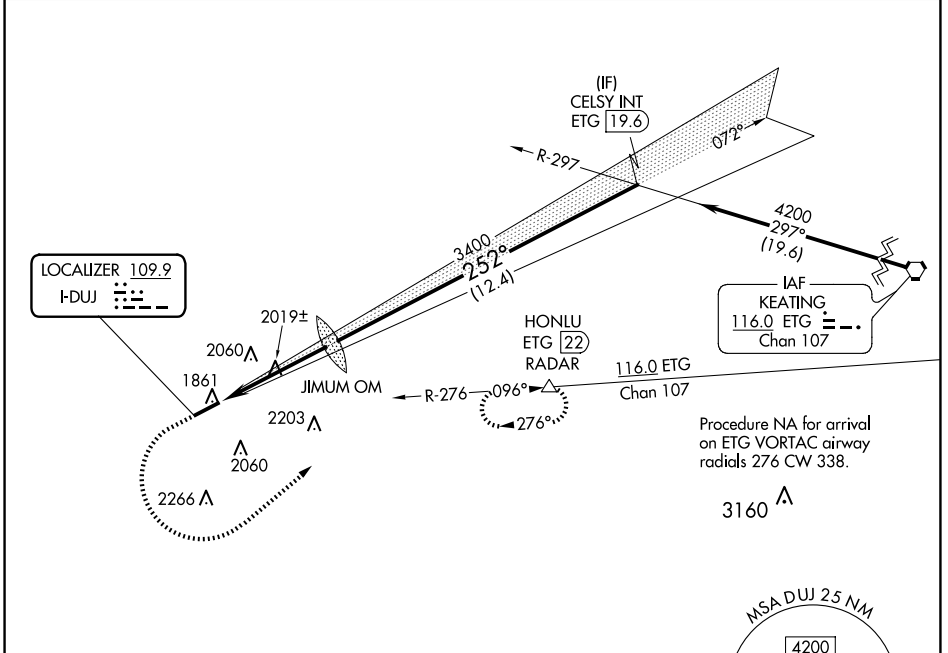
LOC I-DUJ <b>109.9</b>	APP CRS <b>252°</b>	Rwy Idg TDZE Apt Elev	<b>5503</b> <b>1817</b> <b>1817</b>
---------------------------	------------------------	-----------------------------	---

# ILS or LOC RWY 25

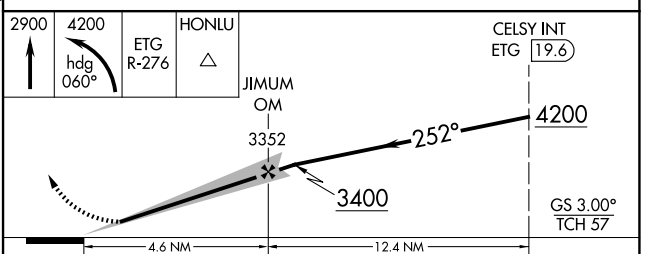
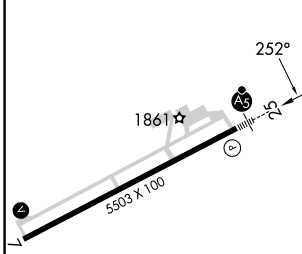
DUBOIS RGNL (DUJ)

<p><b>⚠</b> Circling NA for Cat D south of Rwy 7-25. For inop ALS, increase S-LOC 25 Cats C/D visibility to 1½ SM.</p>	<p><b>MALSR</b></p>	<p><b>MISSED APPROACH:</b> Climb to 2900 then climbing left turn to 4200 on heading 060° and ETG VORTAC R-276 to HONLU/ETG 22 DME/RADAR and hold.</p>
--	---------------------	---

ASOS <b>119.025</b>	CLEVELAND CENTER <b>126.725 291.65</b>	UNICOM <b>123.0 (CTAF) 0</b>
------------------------	---	---------------------------------



ELEV 1817	<b>D</b>	TDZE 1817
-----------	----------	-----------



HIRL Rwy 7-25	REIL Rwy 7	FAF to MAP 4.6 NM			
Knots	60	90	120	150	180
Min:Sec	4:36	3:04	2:18	1:50	1:32
<b>CIRCLING</b>	2320-1 503 (600-1)	2360-1 543 (600-1)	2380-1½ 563 (600-1½)	2400-2 583 (600-2)	

NE-4, 15 MAY 2025 to 12 JUN 2025

NE-4, 15 MAY 2025 to 12 JUN 2025